

TOYOTA/LEXUS	2	FORD USA (LINCOLN)	52
NISSAN/INFINITI	2	GM USA	52
HONDA /ACURA	2	CHRYSLER/JEEP/DODGE	66
MITSUBISHI	4	PERODUA	69
MAZDA	4	OPEL / GM BRAZIL	69
SUZUKI/MARUTI	5	H O L D E N	70
SUBARU	6	CHERY	70
ISUZU	7	DAEHAN	71
UD	8	PROTON	71
FUSO	8	MVM	71
AUDI/VW/SEAT/SKODA	9	LIFAN	72
FORD EU	11	TATA	72
RENAULT / DACIA	11	LDV	72
BMW	17	MG	72
LAND ROVER	18	ASIAN TRUCK/BUS	73
JAGUAR	18	EUROPE TRUCKS BETA	73
MERCEDES BENZ	18	MERCEDES COMMERCIAL	73
FIAT / ALFA ROMEO / LANCIA	28	MAN	86
PEUGEOT	29	SCANIA	86
CITROEN	37	ETC	86
VOLVO	50		
PORSCHE	50		
FORD USA	50		

***New softwares released for following makes:**

- LDV
- MG
- MERCEDES COMMERCIAL
- MAN
- SCANIA

TOYOTA/LEXUS**Avanza (Requested from Malaysia)****EPS added**

- Basic Function
 - DTC analysis
 - Data analysis
 - ECU Information

Feedback**Pre-crash2 (Feedback to Japan)**

- Special Function bug fixed
 - Front Beam Axis Adjustment

[Back to Index](#)**NISSAN/INFINITI****Lane Camera New Type added (CAN)**

- Basic Function
 - DTC Analysis
 - Data Analysis
 - ECU Information Display
- Special Function Function
 - Auto AIM
 - AIM Check

Applicable model: INFINITI QX60

Sonar Special Function Bug Fix (CAN)

- Special Function Function
 - Volume Setting Error

Applicable model : Note

BCM Special Function Bug Fix (CAN)

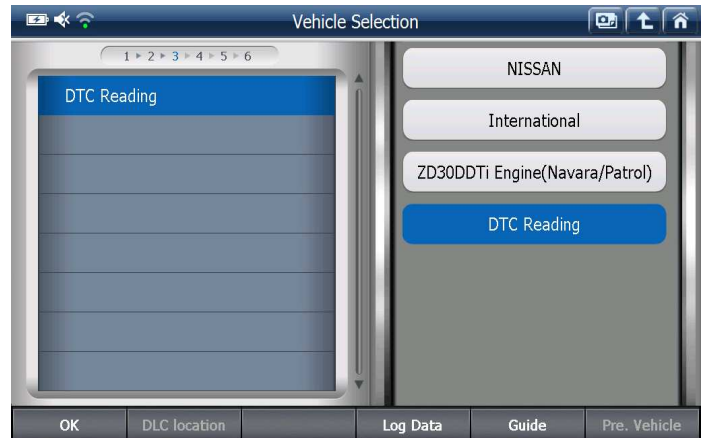
- Special Function Function
 - Vehicle Speed Adjustment

Applicable model : Teana

Pulse type DTC Reading added

- Basic Function
 - DTC Analysis

Applicable model : ZD30DDTi Engine(Navara/Patrol)

**Feedback**

ICC/ADAS DTC Description added – Requests from Japan

Lane Camera new type ID added – Requests from the U.S.

Sonar Special function bug fixed – Requests from Japan

AT/CVT DTC Description added – Requests from Iraq

Pulse Type DTC Reading added – Requests from Aus.

[Back to Index](#)**HONDA /ACURA****New System added**

i-Shift: Poland, UK, Cyprus...

- Basic Function
 - DTC analysis
 - Data analysis
 - ECU Info

Integrated Driver Support System : INS

- Basic Function
 - DTC analysis
 - ECU Info
- Advanced Function
 - Radar Aiming
 - Static Camera Aiming (Japan Area)

IMA : INS

- Basic Function
 - DTC analysis
 - ECU Info

BCM_GAUGE

- Basic Function
 - DTC analysis

Data analysis
- Advanced Function
SELF - DIAGNOSTIC FUNCTION

BCM_Lighting : Malaysia

- Basic Function
DTC analysis
Data analysis
Actuation

BCM_Doorlocks : Malaysia

- Basic Function
DTC analysis
Data analysis
Actuation

BCM_Keyless : Malaysia

- Basic Function
DTC analysis
Data analysis
Actuation
- Advanced Function
Keyless Check

BCM_Security : Malaysia

- Basic Function
DTC analysis
Data analysis
Actuation
- Advanced Function
History Data Clear
History Data

BCM_Wiper : Malaysia

- Basic Function
DTC analysis
Data analysis
Actuation

BCM_HVAC : Malaysia

- Basic Function
DTC analysis
Data analysis
- Advanced Function
HVAC Control Unit Self Test

BCM_POWER WINDOW : Malaysia

- Basic Function
DTC analysis
Data analysis
Actuation Test
- Advanced Function
Power Window Reset for Driver side
Power Window Reset for Passenger side

Power Window Reset for Left Rear
Power Window Reset for Right Rear

BCM_Auto Light Leveling : Malaysia

- Basic Function
DTC analysis
Data analysis
Actuation Test
- Advanced Function
Sensor Initial Position Learning

BCM_Parking Sensor : Malaysia

- Basic Function
DTC analysis
Data analysis

BCM_POWER SLIDING DOOR

- Basic Function
DTC analysis
Data analysis
Actuation

BCM_Seat_Heater

- Basic Function
DTC analysis
Data analysis

New function added

Immobiliser : Malaysia, India, South America ...

- Advanced Function
ECM/PCM Replacement

VSA : Malaysia

- Advanced Function
Brake Pad Maintenance Mode
Brake Light Relay/TSA Relay Test

Auto Light Leveling

- Advanced Function
Sensor Initial Position Learning

Function Improved

EPS: Malaysia

- Basic Function
Data analysis extended

BCM_POWER SLIDING DOOR

- Basic Function
Data analysis

BCM_Keyless

- Basic Function
DTC analysis

Bug Fixed**EPS : INS**

- Basic Function
- Data analysis

VSA : INS

- Advanced Function
- All Sensor

[Back to Index](#)**MITSUBISHI****ECLIPSE CROSS (GK1W)**

- 2018 model added

OUTLANDER (GF7W)

- 2018 model added

ASX (GA1W)

- 2018 model added

Feedback**Meter - Service reminder reset (Feedback from UK)**

- Range reset issue bug fixed

eK series (Feedback from Japan)**ACC/FCM added**

- Basic Function
- DTC analysis
- Data analysis
- ECU Information

[Back to Index](#)**MAZDA****CX-3 1.5L S5, 2.0L PE System Added**

- DCDC(DC to DC Converter Control Module)
- DSM(Drivers Seat Module)
- HUD(Head Up Display)
- PSM(Parking Sensor Module)

CX-5 2.0L PE System Added

- HUD(Head Up Display)
- PSM(Parking Sensor Module)
- PLG(Power Liftgate)

CX-5 2.2L SH System Added

- BSML(Blind Spot Monitoring Left)
- BSMR(Blind Spot Monitoring Right)
- HUD(Head Up Display)
- PSM(Parking Sensor Module)
- PLG(Power Liftgate)
- VMC(View Monitor Camera)
- CX-5 2.5L PY System Added**
- HUD(Head Up Display)
- PSM(Parking Sensor Module)
- PLG(Power Liftgate)

CX-9 2.5L PY_T Vehicle Added

- PCM(Powertrain Control Module)
- ABS(Anti-Lock Brake System)
- AFS/ALM(Adaptive Front Lighting System/Auto Leveling Module)
- AM(Amplifier Module)
- CMU(Connectivity Master Unit)
- DCDC(DC to DC Converter Control Module)
- DCM(Data Communication Module)
- DSM(Drivers Seat Module)
- EATC(Electronic Automatic Temperature Control)
- EPB(Electronic Parking Brake)
- EPS(Electronic-Controlled Power Steering)
- IC(Instrument Cluster)
- HUD(Head Up Display)
- PLG(Power Liftgate)
- PSM(Parking Sensor Module)
- RCM(Restraint Control Module)
- TCM(Transmission Control Module)
- BSML(Blind Spot Monitoring Left)
- BSMR(Blind Spot Monitoring Right)
- FSC(Forward Sensing Camera)
- SSU(Smart Start Unit)
- F_BCM(Front Body Control Module)
- R_BCM(Rear Body Control Module)
- SCBS(Smart City Brake Support)
- SBS/MRCC(Smart Brake Support/Mazda Radar Cruise Control)

DEMIO/VERISA/MAZDA2 1.5L P5, 1.5L S5 System Added

- PSM(Parking Sensor Module)

AXELA/MAZDA3 2.0L PE, 2.0L PE(Hybrid), 2.5L PY, 2.2L SH (Diesel) System Added

- PSM(Parking Sensor Module)

ATENZA/MAZDA6 2.0L PE System Added

- HUD(Head Up Display)

ATENZA/MAZDA6 2.5L PY System Added

- HUD(Head Up Display)
- PSM(Parking Sensor Module)

ATENZA/MAZDA6 2.2L SH (Diesel) System Added

- HUD(Head Up Display)

ESCAPE/TRIBUTE From 2004 System Added

- 4x4(4x4 Control Module)

[Back to Index](#)

SUZUKI/MARUTI**New System added**

Dual Sensor Brake Support : INS

- Basic Function
 - DTC analysis extended
 - Data analysis extended
 - ECU Information
- Advanced Function
 - Aiming Adjustment

New Type added

EPI : Poland (Scross 1.0)

- Basic Function
 - DTC analysis
 - Data analysis
 - Actuation
 - ECU Info

ABS : Poland (Scross 1.0)

- Basic Function
 - DTC analysis
 - Data analysis
 - ECU Info
- Advanced Function
 - Sensor Calibration
 - Hydraulic Control Test
 - ESP Function Setting

CVT : Israel

- Basic Function
 - DTC analysis
 - Data analysis
 - ECU Info
- Advanced Function
 - CVT G Sensor Calibration
 - Learning Value Initializaton

AT/CVT : INS (Swift Hybrid ZC43S)

- Basic Function
 - DTC analysis
 - Data analysis

ECU Info

- Advanced Function
 - All learning value initialization
 - Clutch assembly initialization
 - Shift tower initialization
 - Oil discharge
 - Show Auto Gear Shift learning result

ABS : INS (Swift Hybrid ZC43S)

- Basic Function
 - DTC analysis
 - Data analysis
 - ECU Info
- Advanced Function
 - Sensor Calibration
 - Hydraulic Control Test
 - ESP Function Setting

EPS : INS (Swift Hybrid ZC43S)

- Basic Function
 - DTC analysis
 - Data analysis
 - ECU Info

SRS : INS (Swift Hybrid ZC43S)

- Basic Function
 - DTC analysis
 - Data analysis
 - ECU Info

BCM : INS (Swift Hybrid ZC43S)

- Basic Function
 - DTC analysis
 - Data analysis
 - Actuation
 - ECU Info
- Advanced Function
 - Door Mirror Setting
 - Keyless Start System
 - Remote Controller Battery Warning
 - Security Alarm Setting
 - Answer-Back Setting (Buzzer Sounding Outside Vehicle)
 - Answer-Back Setting
 - Turn Signal Light
 - Remote Controller Area Warning
 - High Beam Assist

Meter : INS (Swift Hybrid ZC43S)

- Basic Function
 - DTC analysis
 - Data analysis
 - Actuation
 - ECU Info

- Advanced Function
 - Status Information Lamp/Ene-charge Indicator
 - Eco-Score
 - Idling Stop Fuel Conservation/Duration
- Radar Brake Support : INS (Swift Hybrid ZC43S)
- Basic Function
 - DTC analysis
 - Data analysis
 - ECU Info
- Advanced Function
 - Aiming (Beta)

Hydraulic Control Test

[Back to Index](#)

SUBARU

New system added

BCM(Body Control Module)

- Basic function
 - DTC Analysis
 - Data Analysis
 - Actuation Test
 - ECU Information Display
- Support function
 - Keyless ID registration
 - Keyless ID erasure
 - Initial keyless setting
 - Initial button setting
 - Customize

Auto transmission

- Basic function
 - DTC Analysis
 - Data Analysis
 - ECU Information Display
- Support function
 - AT Learning mode

New functions added

Auto transmission

- Support function
 - Clear AT learning value
 - AT Learning mode
 - AWD ON/OFF switching mode

Keyless

- Basic function
 - Data Analysis
 - Actuation Test
- Support function
 - Keyless Access with Push Button Start Check
 - Collation result history Clear

Engine

- Support function
 - Oil maintenance at the time of ECM replacement
 - Injector programming
 - Fuel pump duty learning

Auxiliary Power Module : INS (Swift Hybrid ZC43S)

- Basic Function
 - DTC analysis
 - Data analysis
 - ECU Info

Auto Leveling : INS (Swift Hybrid ZC43S)

- Basic Function
 - DTC analysis
 - Data analysis
 - Actuation
 - ECU Info
- Advanced Function
 - Vehicle Height Sensor Initialization

EPI : UK

- Basic Function
 - DTC analysis
 - Data analysis
 - Actuation
 - ECU Info

Function Improved

SRS : Ukraine *

- Basic Function
 - DTC analysis extended

SRS : INS *

- Basic Function
 - DTC analysis extended

Bug Fixed

Radar Brake Support : INS *

- Basic Function
 - Data analysis

EPI : INS

- Basic Function
 - Data analysis

ABS : Poland

- Advanced Function

Fuel injector injection amount learning

New ID added**Engine 9P****Auto transmission****Bug Fixed**

Auto transmission : Calibration ID added
BSD-L(Blind spot detection left side): Actuation communication stabilized
BSD-R(Blind spot detection right side): Actuation communication stabilized
BCM(Body control module) : Communication stabilized
Immobilizer : Communication stabilized
SRS Airbag : DTC Item added

[Back to Index](#)

ISUZU**New model added**

C/E Series(Medium/Heavy duty)
6UZ1
6WG1
6WG1-Red4
6WG1-C/Rail
6WG1(E-Governor)
6UZ1-TC
6WG1-TC
6W*1-TC(GEN Thailand Spec)
SMOOTHER
ABS/ASR ADVICS
ABS/ASR
ABS/IESC
Wabco EBS
ESC(wiht EBS)
HSA(ISS/HSA)
Air Suspension
Millimeterwave Radar Cruise
BCM
BCM(MIMAMORI)
SRS Airbag
Driving Safety Adviser

New system added**F/G Series : 4HK1 – TC EURO6 Type 1**

- Basic function
DTC Analysis
Data Analysis
Actuation Test
ECU Information Display

- Support function

DPD Automatic regeneration
DPD Slow regeneration
DPD Forced regeneration
Clear DPD data(DPD Regeneration)
Clear DPD data(Exchange DPD filter)
Clear learned value(Intake throttle)
Clear learned value(Quantity cylinder balancing)
Clear learned value(Fuel mass observer)
Clear learned value(Heated oxygen sensor)
Clear learned value(Fuel rail pressure regulator)
Clear learned value(Fuel injection)
SCR Catalyst data reset
NOx Sensor 1 data reset
Exhaust gas temperature sensor 3 data reset
Engine control module data reset
Oxidation catalyst data reset
Urea fluid injector data reset
Exhaust differential pressure sensor learning
Injector programming

F/G Series : 4HK1 – TC EURO6 Type 2

- Basic function
DTC Analysis
Data Analysis
Actuation Test
ECU Information Display
- Support function
Injector programming
DPD Automatic regeneration
DPD Slow regeneration
DPD Forced regeneration
DPD Regeneration data reset
Engine oil exchange reset
Fuel supply pump learn resetting

F/G Series : Smoother Type 1

- Basic function
DTC Analysis
Data Analysis
Actuation Test
ECU Information Display
- Support function
Clear Clutch Learned Data(Beta)

F/G Series : Smoother Type 2

- Basic function
DTC Analysis
Data Analysis
Actuation Test
ECU Information Display
- Support function
Clear Clutch Learned Data(Beta)
Clear Gear Position Learn(Beta)

F/G Series : HSA(ISS/HSA)

- Basic function
 - DTC Analysis
 - Data Analysis
 - Actuation Test
 - ECU Information Display

F/G/C/E Series : Smoother-G(AMT)

- Basic function
 - DTC Analysis
 - Data Analysis
 - Actuation Test
 - ECU Information Display
- Support function
 - Clear gear learned values
 - Clear clutch learned values

N Series : ABS Wabco 9P

- Basic function
 - DTC Analysis
 - Data Analysis
 - Actuation Test
- Support function
 - ESC CALIBRATION
 - ECS STEERING ANGLE SENSOR

New D-MAX :RZ4E-TC - Euro6

- Basic function
 - DTC Analysis
 - Data Analysis
 - Actuation Test
 - ECU Information Display
- Support function
 - DPD Slow regeneration
 - DPD Forced regeneration
 - Injector programming
 - Vehicle speed correction data(Tire size)
 - Clear DPD Data(Exchange DPD filter)
 - Clear learned value(Dew point)
 - Clear learned value(Fuel injection)
 - Clear learned value(Fuel rail pressure regulator)
 - Clear learned value(Lambda sensor)
 - Clear learned value(Fuel mass observer)
 - Clear learned value(Wheel learning)
 - Clear learned value(Intake throttle)
 - Clear learned value(Lambda sensor adaptation)
 - Reset oil dilution
 - Exhaust differential pressure sensor learning

New functions added**F/G Series : 6WG1-C/Rail - GEN(3P)**

- Basic function
 - Actuation Test

F/G Series : 6WF1 – Euro2/3

- Basic function
 - Actuation Test

Bug Fixed

- N Series – SMOOTHER-E/AS: Communication stabilized
- N Series – Engine : Communication stabilized (Japan Spec.)
- N Series – Engine Euro 4 type: Communication stabilized
- N Series – Engine North America type: Communication stabilized
- N Series – Engine North America type: DTC Item added
- N Series – Smoother North America type : DTC Item added
- N Series – ABS Euro6: Communication stabilized
- N Series – Urea SCR Euro6: Communication stabilized
- F Series – Smoother: DTC Item added

[Back to Index](#)**UD****QUON (Request from Myanmar)
ENGINE**

GE13 engine VNT specification added

Wabco ABS added

- Basic Function
 - DTC analysis
 - Data analysis
 - Actuation test
 - ECU Information

Wabco EBS added

- Basic Function
 - DTC analysis
 - Data analysis
 - Actuation test
 - ECU Information

[Back to Index](#)**FUSO****Super Great (EURO 5) added****ACM - AdBlue(R) exhaust aftertreatment unit**

- Basic Function
 - DTC analysis

Data analysis
Actuation test
ECU Information

CPC2 - Common powertrain controller Control unit added

- Basic Function
 - DTC analysis
 - Data analysis
 - Actuation test
 - ECU Information

MCM - Motor Control Module Control unit added

- Basic Function
 - DTC analysis
 - Data analysis
 - Actuation test
 - ECU Information
- Special Function added
 - 000 FMU
 - 001 PLV
 - 002 High pressure line
 - 003 DPF
 - 004 VGT
 - 005 NOx
 - 006 EGR
 - 007 Number of engine starts

Transmission added

- Basic Function
 - DTC analysis
 - Data analysis
 - Actuation test
 - ECU Information

ABS added

- Basic Function
 - DTC analysis
 - Data analysis
 - Actuation test
 - ECU Information
- Special Function added
 - ECU reset

Retarder added

- Basic Function
 - DTC analysis
 - Data analysis
 - ECU Information
- Special Function added
 - ECU reset

AUDI/VW/SEAT/SKODA**Engine Electronics (CAN Type) Function improved**

- Special function added
 - Basic setting
 - Adaptation Control
 - Long Coding
 - Login Control

Transmission Electronics (CAN Type) Function improved

- Special function added
 - Coding II

Brake Electronics (CAN Type) Function improved

- Special function added
 - Coding II
 - Security Access

Access and Start Permission (CAN Type) Function improved

- Special function added
 - Long Coding

Auto HVAC (CAN Type) Function improved

- Basic Function added
 - Data analysis
- Special function added
 - Basic setting
 - Coding II

Electronic Central Electrics (CAN Type) Function improved

- Basic Function added
 - Data analysis
- Special function added
 - Adaptation Control
 - Long Coding

Park/Steer Assist (CAN Type) Function improved

- Basic Function added
 - Data analysis
- Special function added
 - Adaptation Control
 - Security Access

Engine Electronics 2 (CAN Type) Function improved

- Special function added
 - Basic setting
 - Adaptation Control
 - Coding II

[Back to Index](#)

Airbag (CAN Type) Function improved

- Special function added
 - Basic setting
 - Adaptation Control
 - Coding II
 - Security Access

Steering Wheel Electronics (CAN Type) Function improved

- Special function added
 - Basic setting
 - Long Coding
 - Security Access

Instrument Cluster (CAN Type) Function improved

- Basic Function added
 - Data analysis
- Special function added
 - Adaptation Control
 - Coding II
 - Security Access

Auxiliary Heater (CAN Type) Function improved

- Basic Function added
 - Data analysis
- Special function added
 - Basic setting
 - Adaptation Control

CAN Gateway (CAN Type) Function improved

- Basic Function added
 - Data analysis
- Special function added
 - Basic setting
 - Long Coding

High Beam Assist (CAN Type) Function improved

- Basic Function added
 - Data analysis
- Special function added
 - Adaptation Control

4WD Electronics (CAN Type) Function improved

- Special function added
 - Basic setting

Immobilizer (CAN Type) Function improved

- Special function added
 - Adaptation Control
 - Coding II

Media Player 3 (CAN Type) Function improved

- Basic Function added

Data analysis

Engine Electronics Conjunction (CAN Type) Function improved

- Basic Function added
 - Data analysis
- Special function added
 - Basic setting
 - Adaptation Control

Self Leveling Suspension (CAN Type) Function improved

- Special function added
 - Basic setting

Seat Adjustment-Driver (CAN Type) Function improved

- Basic Function added
 - Data analysis
- Special function added
 - Adaptation Control

Navigation (CAN Type) Function improved

- Special function added
 - Adaptation Control

Door Electronics-Driver (CAN Type) Function improved

- Basic Function added
 - Data analysis
- Special function added
 - Long Coding

Steering Assistance (CAN Type) Function improved

- Special function added
 - Coding II
 - Security Access

Central Module Convenience System (CAN Type) Function improved

- Basic Function added
 - Data analysis
- Special function added
 - Adaptation Control
 - Coding II

Door Electronics-Passenger (CAN Type) Function improved

- Basic Function added
 - Data analysis
- Special function added
 - Long Coding

Parking Brake (CAN Type) Function improved

- Special function added
Adaptation Control
Security Access

Headlight Range Control (CAN Type) Function improved

- Special function added
Adaptation Control
Coding II
Security Access

Radio (CAN Type) Function improved

- Special function added
Coding II

Door Electronics-Left Rear (CAN Type) Function improved

- Basic Function added
Data analysis

Tire Pressure Monitoring (CAN Type) Function improved

- Special function added
Coding II

Back-up Camera (CAN Type) Function improved

- Special function added
Adaptation Control
Security Access

Door Electronics-Right Rear (CAN Type) Function improved

- Basic Function added
Data analysis

[Back to Index](#)**FORD EU****Bug Fixed****Ranger 2.2L Diesel 5.4L**

- PCM(Powertrain Control Module)

[Back to Index](#)**RENAULT / DACIA****New Model added****KADJAR****Injection**

- Basic Function
DTC analysis
Data analysis
Actuation test
ECU information
- Advanced Function
Read Configuration
Enter injector codes
Cabin filter regeneration
Adaptives after replacing cabin filter
Air Flowmeter Programming
Fuel Pump Programming
Engine Adaptives [RZ003]
EGR Valve Programming
Catalytic Converter
Cruise control/Speed Limiter Programming
Air Damper Valve Programming
Adaptives On Air Intake Flap Fault
Particle Filter Pressure Diff. Sensor
Engine Adaptives [RZ002]
Proportional Richness Sensor Programming
Rail Pressure Sensor Adaptives
EGR Bypass Programming
Swirl Flap Programming
Swirl Flap
Number Of Starting Cycles [RZ079]
Stop And Start Function
Starter Adaptives
High Pressure Pump Counter [RZ079]
Injection Pump Adaptives [RZ077]
Cylinder 1 Injector Code
Cylinder 2 Injector Code
Cylinder 3 Injector Code
Cylinder 4 Injector Code
V.I.N write
Number of Starting Cycle [VP343]
High Pressure Pump Counter [VP344]
Number Of Starting 1
Number Of Starting 2
Number Of Starting 3
Number Of Starting 4
Alternator Setpoint Voltage

Instrument panel

- Basic Function
DTC analysis
Data analysis
Actuation test
ECU information
- Advanced Function
Read configuration
Oil service and odometry miles-km

Automatic Gearbox

- Basic Function
 - DTC analysis
 - Data analysis
 - Actuation test
 - ECU information
- Advanced Function
 - V.I.N write

A.B.S

- Basic Function
 - DTC analysis
 - Data analysis
 - Actuation test
 - ECU information
- Advanced Function
 - Read configuration
 - Lock Computer
 - Unlock computer
 - Side on Which Steering Wheel Fitted
 - V.I.N write

UCH

- Basic Function
 - DTC analysis
 - Data analysis
 - Actuation test
 - ECU information
- Advanced Function
 - Read configuration
 - Valve set selection

Following tyre change**Airbag / Pretensioners**

- Basic Function
 - DTC analysis
 - Data analysis
 - Actuation test
 - ECU information
- Advanced Function
 - Read configuration
 - Lock computer
 - Unlock computer
 - Write date of last after saled operation

Airconditioning

- Basic Function
 - DTC analysis
 - Data analysis
 - Actuation test
 - ECU information
- Advanced Function
 - Computer reinitialisation

Geographical Zone**Parking brake**

- Basic Function
 - DTC analysis
 - Data analysis
 - Actuation test
 - ECU information
- Advanced Function
 - Read configuration
 - Vehicle Configuration
 - Activate Maintenance Mode
 - Deactivate Maintenance Mode
 - Accelerometer
 - V.I.N write

UPC

- Basic Function
 - DTC analysis
 - Data analysis
 - Actuation test
 - ECU information
- Advanced Function
 - High Pressure Pump counter [RZ012]
 - Number Of Strating Cycles
 - High Pressure Pump counter [VP027]
 - Stater Wear Counter
 - Computer Initialisation
 - Resetting Internal Protection

- SANDERO II**Injection**

- Basic Function
 - DTC analysis
 - Data analysis
 - Actuation test
 - ECU information
- Advanced Function
 - Read Configuration
 - Enter injector codes
 - Cabin filter regeneration
 - Adaptives after replacing cabin filter
 - Air Flowmeter Programming
 - Fuel Pump Programming
 - Engine Adaptives [RZ003]
 - EGR Valve Programming
 - Catalytic Converter
 - Cruise control/Speed Limiter Programming
 - Air Damper Valve Programming
 - Adaptives On Air Intake Flap Fault
 - Particle Filter Pressure Diff. Sensor
 - Engine Adaptives [RZ002]
 - Proportional Richness Sensor Programming
 - Rail Pressure Sensor Adaptives

EGR Bypass Programming
Swirl Flap Programming
Swirl Flap
Number Of Starting Cycles [RZ079]
Stop And Start Function
Starter Adaptatives
High Pressure Pump Counter [RZ079]
Injection Pump Adaptatives [RZ077]
Cylinder 1 Injector Code
Cylinder 2 Injector Code
Cylinder 3 Injector Code
Cylinder 4 Injector Code
V.I.N write
Number of Starting Cycle [VP343]
High Pressure Pump Counter [VP344]
Number Of Starting 1
Number Of Starting 2
Number Of Starting 3
Number Of Starting 4
Alternator Setpoint Voltage

A.B.S

- Basic Function
 - DTC analysis
 - Data analysis
 - Actuation test
 - ECU information
- Advanced Function
 - Read Configuration
 - Check target teeth
 - Steering wheel angle offset sensor
 - Transverse acceleration offset sensor
 - Brake pressure offset sensor
 - Longitudinal acceleration sensor offset
 - Reset
 - Steering wheel angle sensor
 - Write Date of Last After Sales Operation
 - Speedo index
 - Acceleration Sensor
 - Hill Start
 - Bleed rear R/H wheel
 - Bleed rear L/H wheel
 - Bleed front R/H wheel
 - Bleed front L/H wheel
 - R/H Rear Wheel Solenoid Valves
 - L/H Rear Wheel Solenoid Valves
 - R/H Front Wheel Solenoid Valves
 - L/H Front Wheel Solenoid Valves
 - V.I.N write

Instrument panel

- Basic Function
 - DTC analysis
 - Data analysis

- Actuation test
- ECU information
- Advanced Function
 - Read Configuration
 - Computer Initialisation
 - Language Version
 - ADAC Display Type
 - Odometer in Km
 - Odometer in Miles
 - V.I.N write

UCH

- Basic Function
 - DTC analysis
 - Data analysis
 - Actuation test
 - ECU information
- Advanced Function
 - Read Configuration
 - Hazard Warning Lights Illumination by ABS
 - Second Fitting Alarm
 - Alarm
 - V.I.N write

Airbag / Pretensioners

- Basic Function
 - DTC analysis
 - Data analysis
 - Actuation test
 - ECU information
- Advanced Function
 - Read configuration
 - Lock computer
 - Unlock computer

Airconditioning

- Basic Function
 - DTC analysis
 - Data analysis
 - Actuation test
 - ECU information
- Advanced Function
 - Computer reinitialisation
 - V.I.N write

Automatic Gearbox

- Basic Function
 - DTC analysis
 - Data analysis
 - Actuation test
 - ECU information

Variable P.A.S

- Basic Function

DTC analysis
Data analysis
Actuation test
ECU information
- Advanced Function
V.I.N write

UPC

- Basic Function
DTC analysis
Data analysis
Actuation test
ECU information
- Advanced Function
Read Configuration
Computer Reinitialisation
Resetting Internal Protection
V.I.N write

Parking Brakre

- Basic Function
DTC analysis
Data analysis
Actuation test
ECU information
- Advanced Function
V.I.N write

Telematic CTRL Unit

- Basic Function
DTC analysis
Data analysis
Actuation test
ECU information
- Advanced Function
Reset

Hands-free Module

- Basic Function
DTC analysis
Data analysis
Actuation test
ECU information
- Advanced Function
Read Configuration

- MEGAN IV

Injection

- Basic Function
DTC analysis
Data analysis
Actuation test
ECU information
- Advanced Function
Read Configuration

Enter injector codes
Cabin filter regeneration
Adaptives after replacing cabin filter
Air Flowmeter Programming
Fuel Pump Programming
Engine Adaptives [RZ003]
EGR Valve Programming
Catalytic Converter
Cruise control/Speed Limiter Programming
Air Damper Valve Programming
Adaptives On Air Intake Flap Fault
Particle Filter Pressure Diff. Sensor
Engine Adaptives [RZ002]
Proportional Richness Sensor Programming
Rail Pressure Sensor Adaptives
EGR Bypass Programming
Swirl Flap Programming
Swirl Flap
Number Of Starting Cycles [RZ079]
Stop And Start Function
Starter Adaptives
High Pressure Pump Counter [RZ079]
Injection Pump Adaptives [RZ077]
Cylinder 1 Injector Code
Cylinder 2 Injector Code
Cylinder 3 Injector Code
Cylinder 4 Injector Code
V.I.N write
Number of Starting Cycle [VP343]
High Pressure Pump Counter [VP344]
Number Of Starting 1
Number Of Starting 2
Number Of Starting 3
Number Of Starting 4
Alternator Setpoint Voltage

Instrument panel

- Basic Function
DTC analysis
Data analysis
Actuation test
ECU information
- Advanced Function
Read configuration
Oil service and odometry miles-km

Automatic Gearbox

- Basic Function
DTC analysis
Data analysis
Actuation test
ECU information
- Advanced Function

V.I.N write

A.B.S

- Basic Function
 - DTC analysis
 - Data analysis
 - Actuation test
 - ECU information
- Advanced Function
 - Read configuration
 - Lock Computer
 - Unlock computer
 - Side on Which Steering Wheel Fitted
 - V.I.N write

UCH

- Basic Function
 - DTC analysis
 - Data analysis
 - Actuation test
 - ECU information
- Advanced Function
 - Read configuration
 - Valve set selection
 - Following tyre change

Airbag / Pretensioners

- Basic Function
 - DTC analysis
 - Data analysis
 - Actuation test
 - ECU information
- Advanced Function
 - Read configuration
 - Lock computer
 - Unlock computer
 - Write date of last after saled operation

Airconditioning

- Basic Function
 - DTC analysis
 - Data analysis
 - Actuation test
 - ECU information
- Advanced Function
 - Computer reinitialisation
 - Geographical Zone

Parking brake

- Basic Function
 - DTC analysis
 - Data analysis
 - Actuation test
 - ECU information

- Advanced Function
 - Read configuration
 - Vehicle Configuration
 - Activate Maintenance Mode
 - Deactivate Maintenance Mode
 - Accelerometer
 - V.I.N write

UPC

- Basic Function
 - DTC analysis
 - Data analysis
 - Actuation test
 - ECU information
- Advanced Function
 - High Pressure Pump counter [RZ012]
 - Number Of Strating Cycles
 - High Pressure Pump counter [VP027]
 - Stater Wear Counter
 - Computer Initialisation
 - Resetting Internal Protection

- LODGY

Injection

- Basic Function
 - DTC analysis
 - Data analysis
 - Actuation test
 - ECU information
- Advanced Function
 - Read Configuration
 - Enter injector codes
 - Cabin filter regeneration
 - Adaptives after replacing cabin filter
 - Air Flowmeter Programming
 - Fuel Pump Programming
 - Engine Adaptives [RZ003]
 - EGR Valve Programming
 - Catalytic Converter
 - Cruise control/Speed Limiter Programming
 - Air Damper Valve Programming
 - Adaptives On Air Intake Flap Fault
 - Particle Filter Pressure Diff. Sensor
 - Engine Adaptives [RZ002]
 - Proportional Richness Sensor Programming
 - Rail Pressure Sensor Adaptives
 - EGR Bypass Programming
 - Swirl Flap Programming
 - Swirl Flap
 - Number Of Starting Cycles [RZ079]
 - Stop And Start Function
 - Starter Adaptatives
 - High Pressure Pump Counter [RZ079]
 - Injection Pump Adaptatives [RZ077]

Cylinder 1 Injector Code
Cylinder 2 Injector Code
Cylinder 3 Injector Code
Cylinder 4 Injector Code
V.I.N write
Number of Starting Cycle [VP343]
High Pressure Pump Counter [VP344]
Number Of Starting 1
Number Of Starting 2
Number Of Starting 3
Number Of Starting 4
Alternator Setpoint Voltage

Instrument panel

- Basic Function
 - DTC analysis
 - Data analysis
 - Actuation test
 - ECU information
- Advanced Function
 - Read configuration
 - Oil service and odometry miles-km

Automatic Gearbox

- Basic Function
 - DTC analysis
 - Data analysis
 - Actuation test
 - ECU information
- Advanced Function
 - V.I.N write

A.B.S

- Basic Function
 - DTC analysis
 - Data analysis
 - Actuation test
 - ECU information
- Advanced Function
 - Read configuration
 - Lock Computer
 - Unlock computer
 - Side on Which Steering Wheel Fitted
 - V.I.N write

UCH

- Basic Function
 - DTC analysis
 - Data analysis
 - Actuation test
 - ECU information
- Advanced Function
 - Read configuration
 - Valve set selection

Following tyre change

- Airbag / Pretensioners
- Basic Function
 - DTC analysis
 - Data analysis
 - Actuation test
 - ECU information
 - Advanced Function
 - Read configuration
 - Lock computer
 - Unlock computer
 - Write date of last after saled operation

Airconditioning

- Basic Function
 - DTC analysis
 - Data analysis
 - Actuation test
 - ECU information
- Advanced Function
 - Computer reinitialisation
 - Geographical Zone

Parking brake

- Basic Function
 - DTC analysis
 - Data analysis
 - Actuation test
 - ECU information
- Advanced Function
 - Read configuration
 - Vehicle Configuration
 - Activate Maintenance Mode
 - Deactivate Maintenance Mode
 - Accelerometer
 - V.I.N write

UPC

- Basic Function
 - DTC analysis
 - Data analysis
 - Actuation test
 - ECU information
- Advanced Function
 - High Pressure Pump counter [RZ012]
 - Number Of Strating Cycles
 - High Pressure Pump counter [VP027]
 - Stater Wear Counter
 - Computer Initialisation
 - Resetting Internal Protection

Feedback

MALAYSIA : Kangoo MUX – Injection Sensor Bug Fixed

MALAYSIA : Clio IV – Injection Sensor Bug Fixed
CYPRUS : Scenic II – Parking Brake Communication Bug Fixed

Actuation test
ECU Information

[Back to Index](#)

BMW

5 Series – E60 / E61 (2004 - 2009)

ULF-SBX (Interface box) added

- Basic Function
 - DTC analysis
 - Data analysis
 - Actuation test
 - ECU Information

KNAV (Navigation system Korea) added

- Basic Function
 - DTC analysis
 - Data analysis
 - Actuation test
 - ECU Information

TLC (Lane departure warning) added

- Basic Function
 - DTC analysis
 - Data analysis
 - Actuation test
 - ECU Information
- Special Function added
 - Lane change assistant calibration

X3 – E83 (2004 - 2009)

VTG (Transfer case)

- Special Function
 - Replacement
 - Calibration

X5 – E70 (2007 - 2012)

M-ASK-BO (User interface) added

- Basic Function
 - DTC analysis
 - Data analysis
 - Actuation test
 - ECU Information

M-ASK-GW (Gateway) added

- Basic Function
 - DTC analysis
 - Data analysis

2 series – F45 / F46 (2014 - present) added

- DME (Digital Engine Electronics)
- EGS (Electronic transmission management)
- DSC (Dynamic stability control)
- EPS (Electromechanical power steering)
- ACSM (Crash Safety Module)
- BDC (Body Domain Controller)
- CON (Controller)
- FLEL (Frontal Light Electronics Left)
- FLER (Frontal Light Electronics Right)
- FZD (Roof function centre)
- HKL (Automatic luggage compartment lid actuation)
- HU-B
- IHKA (Integrated automatic heating / air conditioning system)
- KOMBI (Instrument cluster)
- PMA (Parking manoeuvring assistant)
- SMFA (Seat module, driver)
- TCB (Telematic Communication Box)
- TRSVCA (ALL round-view camera)
- ZGM (Central Gateway Module)

5 series – G30 / G31 (2017 - present) added

- DME (Digital Motor Electronics)
- EGS (Electronic transmission control)
- GWS (Gear selector switch)
- SCR (Selective Catalytic Reduction)
- VTG (Transfer box)
- DSC (Dynamic Stability Control)
- EPS (Electromechanical power steering)
- FRSF (Long-distance range front radar sensor)
- ACSM (Crash safety module)
- BDC (Body Domain Controller)
- HU-H (Headunit High)
- CON (Controller)
- FLEL (Frontal Light Electronics Left)
- FLER (Frontal Light Electronics Right)
- FZD (Roof function centre)
- HKFM (Tailgate function module)
- IHKA (Integrated automatic heating / air conditioning system)
- KAFAS (Camera-based driver assist system)
- KOMBI (Instrument panel)
- PMA (Parking manoeuvre assistant)
- SAS (Optional extra system)
- SMFA (Seat module, driver)
- SMBF (Seat module, passenger)
- SWW (Lane Change Warning)
- TCB (Telematic Communication Box)
- TRSVCA (All-round vision camera)
- ZGM (Central Gateway Module)

7 series – G11 / G12 (2016 - present) added

DME (Digital Motor Electronics)
DME2 (Digital Motor Electronics)
EGS (Electronic transmission control)
GWS (Gear selector switch)
VTG (Transfer box)
DSC (Dynamic Stability Control)
EPS (Electromechanical power steering)
FRSF (Long-distance range front radar sensor)
VDP (Vertical dynamics platform)
ACSM (Crash safety module)
AMPT (Top Hi-Fi amplifier)
BDC (Body Domain Controller)
HU-H (Headunit High)
CON (Controller)
FLEL (Frontal Light Electronics Left)
FLER (Frontal Light Electronics Right)
FZD (Roof function centre)
HKFM (Tailgate function module)
IHKA (Integrated automatic heating / air conditioning system)
KAFAS (Camera-based driver assist system)
KOMBI (Instrument panel)
PMA (Parking manoeuvre assistant)
RSE (Rear seat entertainment system)
SAS (Optional extra system)
SMFA (Seat module, driver)
SMBF (Seat module, passenger)
SMFAH (Seat module, driver, rear)
SMBFH (Seat module, passenger, rear)
SWW (Lane Change Warning)
TCB (Telematic Communication Box)
TR SVC (All-round vision camera)
ZGM (Central Gateway Module)

[Back to Index](#)**LAND ROVER****New Functions added**

Range Rover 2013
PCM (Powertrain Control Module)
- Advanced Function
Reset Water in Fuel Detection
Diesel Particulate Filter Replacement
Diesel Particle Filter Differential Pressure Sensor Replacement
Diesel Fueling Adaption Reinitialization

Defender 2012 ~ 2015 : AU, Israel
PCM (Powertrain Control Module)

Więcej informacji na www.gscan.com.pl lub pod numerem telefonu + 48 601-817-201

- Advanced Function
High Pressure fuel pump replacement reset
Injector Replacement

RANGE ROVER Evoque 2012 ~ 2013 : Malaysia
PCM (Powertrain Control Module)

- Advanced Function
Service Interval Reset
Oil Service Counter Reset

[Back to Index](#)**JAGUAR****Function Improved**

XJ 2005
ECM (Engine Control Module)
- Basic Function
DTC analysis

[Back to Index](#)**MERCEDES BENZ****New chassis added**

- V-CLASS (414)

New function added

A-CLASS (168)
- ME/CDI/CNG - Engine control unit
Basic function
Actuation Test
Support function
Read coding and transfer to new control module
Read/change coding
Erase coding
Identification

A-CLASS (168)

- ME/CDI/CNG - Engine control unit
Support function
Default initialization
Performing sensor rotor adaptation
Correction programming: Ignition
Correction programming: Fuel quantity
Correction programming: Idling specified speed
with selector lever in position P or N
Correction programming: Idling specified speed
with gear engaged

Correction programming: Injection valve shutoff upon detection of combustion misfirings

A-CLASS (169)

- ME/CDI/CNG - Engine control unit

Support function

Adjustment of injector injection quantities

Teaching in the diesel particulate filter after replacing the engine control unit

Teach-in of diesel particulate filter after replacement of engine control unit without transfer of values

Teach-in process after replacement of component Diesel particulate filter

Teach-in process after replacement of component B28/2 (Pressure differential sensor (DPF))

Teach-in process after replacement of component G3/1 (O2 sensor downstream TWC)

Teach-in process after replacement of component Y74 (Pressure control valve)

Teach-in process after replacement of component Y100/2 (Boost pressure regulator)

Activate fuel pump

Reset quantity mean value adaptation data

Reset values for HFM drift compensation

Resetting air filter learned values after air filter replacement

A-CLASS (169), B-CLASS (245)

- ME/CDI/CNG - Engine control unit

Support function

Adjustment of injector injection quantities

Reset quantity mean value adaptation data

A-CLASS (169), B-CLASS (245)

- ME/CDI/CNG - Engine control unit

Support function

Learning of fuel pump

Learning of the throttle valve stop

Performing sensor rotor adaptation

Resetting of mixture adaptation

Teach in component B79/2 (Transmission neutral position sensor)

Correction programming of ignition

Correction programming of fuel quantity

Correction programming of idling specified speed

Correction of elec. suction fan for engine or A/C

A-CLASS (176), B-CLASS (246), CLA-CLASS (117), GLA-CLASS (156), SL-CLASS (231), SLK-CLASS (172)

- Suspension

Basic function

Actuation Test

Support function

Level calibration**AMG GT (190)**

- ABS/ESP - Electronic stability program

Basic function

Actuation Test

Support function

Reactivate tire pressure loss warning

Calibration of component 'B24/15 (Yaw rate sensor for lateral and longitudinal acceleration)'

AMG GT (190), C-CLASS (205), E-CLASS (213), G-CLASS (463), GLA-CLASS (156), S-CLASS (217), S-CLASS (222)

- ME/CDI/CNG - Engine control unit

Basic function

Actuation Test

Support function

Activation of fuel pump

Resetting of adaptation values

Teach-in of used fuel injectors

Enabling of engine start after crash event

AMG GT (190), SLS-CLASS (197)

- Suspension

Basic function

Actuation Test

B-CLASS (245)

- ME/CDI/CNG - Engine control unit

Support function

Learning of fuel pump

Learning of the throttle valve stop

Performing sensor rotor adaptation

Correction programming of ignition

Correction programming of fuel quantity

Correction programming of idling specified speed with selector lever in position P or N

Correction programming of idling specified speed with gear engaged

Correction of elec. suction fan for engine or A/C

B-CLASS (246)

- ABS/ESP - Electronic stability program

Basic function

Actuation Test

Support function

Teach in component 'B24/15 (Yaw rate, lateral and longitudinal acceleration sensor)'

Activate function 'Tire pressure loss warning'

Check component 'B37/1 (Pedal angle sensor)'

Check offset value of component 'N49 (Steering angle sensor)'

B-CLASS (246), E-CLASS (207), E-CLASS (212)

- ME/CDI/CNG - Engine control unit

Basic function

Actuation Test

Support function

Correction programming of fuel quantity

Injector injection quantity adjustment

Enable natural gas operation

Block natural gas operation

Activate fuel pump

Teach in of throttle valve stop

Teach in of EGR actuator

Teach in of positions for camshafts

B79/3 (Manual transmission main shifter shaft position sensor)

Resetting of adaptation values

Status of teach-in processes

Bleeding after replacement of fuel components

C-CLASS (203), G-CLASS (463)

- IC - Instrument cluster

Support function

Service remainder reset (Manual)

C-CLASS (204)

- ME/CDI/CNG - Engine control unit

Basic function

Actuation Test

Support function

Compression test

Injector injection quantity adjustment

Reset values of quantity mean value adaptation

Teach-in of values of zero quantity calibration

Teach in of throttle valve stop

Activate fuel pump

Reset values of HFM drift compensation

Resetting of contamination level of air filter

Y74 (Pressure regulating valve)

C-CLASS (204)

- TPM - Tire pressure monitor

Support function

Write identification numbers of tire pressure sensors

Read identification numbers of tire pressure sensors

Read identification numbers of tire pressure sensors (with 'MB 2000E' tool)

Write tire pressure specified values (USA)

C-CLASS (204), CL-CLASS (216), CLS-CLASS (218), E-CLASS (207), E-CLASS (212), GLA-CLASS (156), GL-CLASS (164), GL-CLASS (166), GLE-CLASS (292), R-CLASS (251), S-CLASS (221), SL-CLASS (231),

SLK-CLASS (172)

- DTR - Distronic

Support function

Calibration by means of test drive

Initialization

C-CLASS (204), CLS-CLASS (218), E-CLASS (207), E-CLASS (212), GL-CLASS (164)

- ME/CDI/CNG - Engine control unit

Basic function

Actuation Test

Support function

Adjustment of injector injection quantities

Regeneration of DPF when driving

Teaching in the DPF after replacing the ECU

Learning of the throttle valve stop

Teach in after replace of DPF

Teach in after replace of Pressure differ. sensor

Teach in after replace of O2 sens. upstream of

KAT

Teach in after replace of Pressure control valve

Activate fuel pump

Reset quantity mean value adaptation data

Rapid teach in of zero quantity calibration values

Reset values for HFM drift compensation

Resetting air filter learn value after replacement

C-CLASS (204), CLS-CLASS (218), E-CLASS (207), E-CLASS (212), SL-CLASS (231), SLK-CLASS (172)

- Suspension

Support function

Leak test between AIRMATIC valve unit and central reservoir

Leak test of component 'Y36/6 (AIRMATIC valve unit)'

C-CLASS (204), CLS-CLASS (218), E-CLASS (207), E-CLASS (212), SL-CLASS (231), SLK-CLASS (172)

- Suspension

Basic function

Actuation Test

Support function

Level calibration

C-CLASS (204), SLK-CLASS (172)

- ABS/ESP - Electronic stability program

Basic function

Actuation Test

C-CLASS (205)

- ME/CDI/CNG - Engine control unit

Basic function

Actuation Test

Support function

Activate fuel pump
Teach-in of diesel particulate filter after replacement of control unit 'N3/9 (CDI control unit)'
Teach-in process after replacement of component 'Diesel particulate filter'
Reset values of HFM drift compensation
Resetting of contamination level of air filter
Reset learned values of components 'NOx sensor upstream/downstream of SCR catalytic converter'
Resetting of learned values of component 'B6/1 (Camshaft Hall sensor)'
Oxidation catalytic converter
Teach-in process after replacement of component 'SCR catalytic converter'
Y129 (AdBlue(R) metering valve)
B16/15 (Temperature sensor upstream of SCR catalytic converter)
Teach-in process of component 'B28/8 (DPF differential pressure sensor)'
Enabling of engine start after crash event
Injector injection quantity adjustment
Regeneration of the diesel particulate filter while driving

C-CLASS (205), CLS-CLASS (218), E-CLASS (207), E-CLASS (212), E-CLASS (213), GLA-CLASS (156), GLC-CLASS (253), GL-CLASS (166), GLE-CLASS (292), R-CLASS (251), S-CLASS (217), S-CLASS (222), SL-CLASS (231), SLK-CLASS (172)
- ME/CDI/CNG - Engine control unit
Support function
Correction programming of ignition
Correction programming of fuel quantity
Injector injection quantity adjustment

C-CLASS (205), CLS-CLASS (218), E-CLASS (207), E-CLASS (212), E-CLASS (213), GLA-CLASS (156), GLC-CLASS (253), GL-CLASS (166), GLE-CLASS (292), S-CLASS (217), S-CLASS (222), SLK-CLASS (172), Sprinter (906), V-CLASS (447)
- SCR - Selective catalytic reduction
Support function
Resetting warning message 'SCR/AdBlue(R)'

C-CLASS (205), E-CLASS (213), G-CLASS (463), GLA-CLASS (156), GLC-CLASS (253)
- ABS/ESP - Electronic stability program
Basic function
Actuation Test
Support function
Electric parking brake
Left electric parking brake actuator motor test
Right electric parking brake actuator motor test
Calibration of component 'Yaw rate sensor for

lateral and longitudinal acceleration'
Calibration of component 'Electric parking brake'
Test of component 'S9/1 (Brake light switch)'

C-CLASS (205), E-CLASS (213), GLA-CLASS (156), GLC-CLASS (253), S-CLASS (222)
- ME/CDI/CNG - Engine control unit
Basic function
Actuation Test
Support function
Correction programming of fuel quantity
Correction programming of ignition
Teach in of throttle valve stop
Teach in of positions for camshafts
Perform teach in process sensor rotor adaptation
Resetting of adaptation values
Activation of fuel pump
Injector injection quantity adjustment
Enabling of engine start after crash event
Status of teach-in processes

C-CLASS (205), GLC-CLASS (253)
- ABS/ESP - Electronic stability program
Basic function
Actuation Test
Support function
Teach in component 'B24/15 (Yaw rate lateral and longitudinal acceleration sensor)'
Test of component 'S9/1 (Brake light switch)'
Check offset value of component 'N49 (Steering angle sensor)'

C-CLASS (205), V-CLASS (447)
- ME/CDI/CNG - Engine control unit
Support function
Status of teach-in processes
Injector injection quantity adjustment
Activate fuel pump
Quick teach-in of the zero quantity calibration values at idle
Teach in component 'M16/6 (Throttle valve actuator)'
Teach in component 'M16/57 (Exhaust flap controller)'
Teach in component 'M55 (Intake port shutoff actuator motor)'
Teach in component 'Y27/7 (Exhaust gas recirculation actuator, low pressure)'
Teach in component 'Y27/8 (Exhaust gas recirculation actuator, high pressure)'
Teach-in process of component 'G3/2 (Oxygen sensor upstream of catalytic converter)'
Reset values of HFM drift compensation
Resetting of contamination level of air filter

Resetting of learned values of component 'B28/8 (DPF differential pressure sensor)'

Resetting adaptation values of component 'Turbocharger'

Reset values of quantity mean value adaptation

Teach in diesel particulate filter again

Teach in used diesel particulate filter

Regeneration of the diesel particulate filter while driving

Reset learned values of components 'NOx sensor upstream/downstream of SCR catalytic converter'

Reset learned values for AdBlue(R) metering

Teach-in process of component 'Y129 (AdBlue(R) metering valve)'

Teach-in process of component 'B16/15 (Temperature sensor upstream of SCR catalytic converter)'

CL-CLASS (216), MAYBACH (240), S-CLASS (221), SL-CLASS (230)

- ME/CDI/CNG - Engine control unit

Support function

Activate fuel pump

Resetting of mixture adaptation

Reset lambda adaptation

Default initialization

Ignition

Fuel quantity

Idling specified speed with selector lever in position P or N

Idling specified speed with gear engaged

CO setting for vehicles without TWC (Right cylinder bank)

CO setting for vehicles without TWC (Left bank of cylinders)

Electric suction fan for engine or air conditioning

CL-CLASS (216), MAYBACH (240), S-CLASS (221), SL-CLASS (230)

- ME/CDI/CNG - Engine control unit

Support function

Activate fuel pump

Resetting of mixture adaptation

Reset lambda adaptation

Default initialization

Ignition

Fuel quantity

Idling specified speed with selector lever in position P or N

Idling specified speed with gear engaged

CO setting for vehicles without TWC (Right cylinder bank)

CO setting for vehicles without TWC (Left bank of cylinders)

Electric suction fan for engine or air conditioning

CL-CLASS (216), S-CLASS (221)

- ABS/ESP - Electronic stability program

Basic function

Actuation Test

CLS-CLASS (219), E-CLASS (211)

- AAC - Automatic air conditioning

Support function

Normalizing of positioning motors

Break in of AC compressor

CLS-CLASS (219), E-CLASS (211)

- OCP - Overhead control panel

Support function

Read coding and change if necessary

Parameterization

Windshield adaptation of rain sensor

Adaptation of Windshield Green glass

Normalization of the tilting/sliding roof's obstruction sensor

Ambiance lighting

E-CLASS (207), E-CLASS (212)

- ME/CDI/CNG - Engine control unit

Basic function

Actuation Test

Support function

Activate fuel pump

Teach in of throttle valve stop

Teach-in of stop for boost pressure control flap

Acceleration of sensor rotor adaptation

Resetting of values for sensor rotor adaptation

Reset of mixture adaptation values

Y107/1 (Gas cylinder shutoff valves)

Enable natural gas operation

Resetting of adaptation values

E-CLASS (211)

- ME/CDI/CNG - Engine control unit

Basic function

Actuation Test

Support function

Activate fuel pump

Throttle valve stop learning

Recirculated air flap stop learning

CNG compressed natural gas Mode

Resetting of sensor adaptation

Acceleration of sensor rotor adaptation

Resetting of mixture adaptation

Resetting of mixture adaptation (CNG compressed natural gas)

Correction coding : Ignition

Correction coding : Fuel quantity
Correction coding : Idle speed with P/N
Correction coding : Idle speed with gear engaged
Correction coding : Smooth engine running
Correction coding : Engine or air conditioning

E-CLASS (211)

- ME/CDI/CNG - Engine control unit

Basic function

Actuation Test

Support function

Activate fuel pump

Throttle valve stop learning

Recirculated air flap stop learning

CNG compressed natural gas Mode

Resetting of sensor adaptation

Acceleration of sensor rotor adaptation

Resetting of mixture adaptation

Resetting of mixture adaptation (CNG
compressed natural gas)

Correction coding : Ignition

Correction coding : Fuel quantity

Correction coding : Idle speed with P/N

Correction coding : Idle speed with gear engaged

Correction coding : Smooth engine running

Correction coding : Engine or air conditioning

E-CLASS (211), GL-CLASS (164), S-CLASS (221)

- ME/CDI/CNG - Engine control unit

Basic function

Actuation Test

Support function

Test of compression

Test of compression NEW

Reset quantity mean value adaptation data

Adjustment of injector injection quantities

Teaching in the diesel particulate filter after
replacing the engine control unit

Replace component Diesel particulate filter

Replace component Differential pressure sensor

Replace component Y74 (Pressure control valve)

Replacement of an exhaust-relevant component
on the left bank

Replacement of an exhaust-relevant component
on the right bank

Resetting air filter learn value after replacement

Learning of the throttle valve stop

Regeneration of DPF when driving

Rapid teach-in of zero quantity calibration values

E-CLASS (213), G-CLASS (463), GLC-CLASS (253)

- Suspension

Basic function

Actuation Test

Support function

Level calibration

E-CLASS (213), GLC-CLASS (253)

- AIRMATIC PLUS

Basic function

Actuation Test

E-CLASS (213), GLC-CLASS (253)

- Suspension

Basic function

Actuation Test

Support function

Fill suspension struts - Right rear

Fill suspension struts - Left rear

Release suspension struts - Right rear

Release suspension struts - Left rear

Level calibration

G-CLASS (453)

- ME/CDI/CNG - Engine control unit

Basic function

Actuation Test

Support function

Activation of fuel pump

Teach in of throttle valve stop

Teach-in of positions for camshafts

Enabling of engine start after crash event

G-CLASS (463)

- ABS/ESP - Electronic stability program

Basic function

Actuation Test

Support function

Calibration of component 'Acceleration sensor'

Calibration of component 'A7/3 (Traction system
hydraulic unit)'

G-CLASS (463)

- ABS/ESP - Electronic stability program

Basic function

Actuation Test

Support function

Calibration of component 'Acceleration sensor'

Calibration of component 'A7/3 (Traction system
hydraulic unit)'

G-CLASS (463)

- Suspension

Basic function

Actuation Test

GLA-CLASS (156)

- Suspension

Basic function Actuation Test Support function Level calibration Reset of compressor operating time	replacement of control unit 'CDI' Injector injection quantity adjustment Initialization after replacement of Rail pressure sensor Initialization after replacement of Pressure regulator valve Initialization after replacement of Air filter Initialization after replacement of Hot film mass air flow sensor Initialization after replacement of Throttle valve Initialization after replacement of Oxygen sensor Initialization after replacement of Exhaust gas recirculation valve Initialization after replacement of Differential pressure sensor of DPF Initialization after replacement of SCR catalytic converter Initialization after replacement of NOx sensors Initialization after replacement of Temperature sensor SCR catalytic converter Initialization after replacement of AdBlue(R) metering valve Activate fuel pump Quick teach-in of values of zero quantity calibration
GL-CLASS (164), S-CLASS (221) - ME/CDI/CNG - Engine control unit Basic function Actuation Test Support function Activate fuel pump Learning of the throttle valve stop Resetting of adaptation data Resetting the cold-start adaptation values	
SLK-CLASS (172) - ME/CDI/CNG - Engine control unit Basic function Actuation Test Support function Correction programming of ignition Correction programming of fuel quantity Injector injection quantity adjustment Activation of fuel pump Teach in of throttle valve stop Resetting of adaptation values	Sprinter (906) - ME/CDI/CNG - Engine control unit Basic function Actuation Test Support function Regeneration of the diesel particulate filter while driving Regeneration of diesel particulate filter at standstill Teach in diesel particulate filter again Teach-in of diesel particulate filter after replacement of control unit 'CDI' Injector injection quantity adjustment Initialization after replacement of Rail pressure sensor Initialization after replacement of Pressure regulator valve Initialization after replacement of Air filter Initialization after replacement of Hot film mass air flow sensor Initialization after replacement of Throttle valve Initialization after replacement of Oxygen sensor Initialization after replacement of Exhaust gas recirculation valve Initialization after replacement of Differential pressure sensor of DPF Initialization after replacement of SCR catalytic converter
SLS-CLASS (197) - ABS/ESP - Electronic stability program Basic function Actuation Test Support function Road test Reset offset value of signal 'Steering angle' Calibration of intake valves Calibration of separation valves	
SLS-CLASS (197) - ABS/ESP - Electronic stability program Support function ESP(R) calibration at standstill	
Sprinter (906) - ME/CDI/CNG - Engine control unit Basic function Actuation Test Support function Regeneration of the diesel particulate filter while driving Regeneration of diesel particulate filter at standstill Teach in diesel particulate filter again Teach-in of diesel particulate filter after	

Initialization after replacement of NOx sensors
Initialization after replacement of Temperature sensor SCR catalytic converter
Initialization after replacement of AdBlue(R) metering valve
Activate fuel pump
Quick teach-in of values of zero quantity calibration

Sprinter (906), Sprinter (907)

- ME/CDI/CNG - Engine control unit

Support function

Activate drive authorization system

Maximum vehicle speed limit

Teach-in of intake port shutoff

Quick teach-in of the zero quantity calibration values at idle

Quick teach-in of the zero quantity calibration values while driving

Write VIN

Sprinter (906), Sprinter (907)

- ME/CDI/CNG - Engine control unit

Support function

Regeneration of the diesel particulate filter while driving

Regeneration of diesel particulate filter at standstill

Teach-in of diesel particulate filter after replacement of control unit 'CDI'

Teach in diesel particulate filter again

Injector injection quantity adjustment

Throttle valve

Oxygen sensor

Position sensor of camshaft/crankshaft

Diesel particulate filter/Oxidation catalytic converter (NEW)

Diesel particulate filter/Oxidation catalytic converter (USED)

Hot film mass air flow sensor

Reset of lambda values

Activate fuel pump

Quick teach-in of the zero quantity calibration values at idle

Quick teach-in of the zero quantity calibration values while driving

Sprinter (906), V-CLASS (639)

- ME/CDI/CNG - Engine control unit

Basic function

Actuation Test

Support function

Test of compression

Adjustment of injector injection quantities

Hot film mass air flow sensor initialization

Teach in throttle valve

Pressure regulator valve initialization

Air filter initialization

Teach in used DPF

Teach in new DPF

Regeneration DPF

Write VIN

Sprinter (906), V-CLASS (639)

- ME/CDI/CNG - Engine control unit

Support function

Test of compression

Write VIN

Sprinter (909)

- ABS/ESP - Electronic stability program

Basic function

Actuation Test

Support function

Exceptional bleeding

Calibration of component Sensor 'Yaw rate, lateral and longitudinal acceleration'

Calibration of component B143 (Steering angle sensor)

Sprinter (909)

- ME/CDI/CNG - Engine control unit

Basic function

Actuation Test

Support function

B2/5 (Hot film mass air flow sensor)

Initialization after replacement of components: Pressure regulator valve

Injector injection quantity adjustment

Teach in used diesel particulate filter

Teach in new diesel particulate filter

Air filter

Activate fuel pump

Write VIN

Regeneration of diesel particulate filter when driving

V-CLASS (447)

- IC - Instrument cluster

Basic function

Actuation Test

Support function

Service remainder reset

Reset mistakenly remainder reset

Control unit reset

New system added

A-CLASS (168)

- ETC - Electronic transmission control

Basic function
DTC Analysis
DTC EraseMemory
ECU Information Display

DTC Analysis

DTC EraseMemory
ECU Information Display

M-CLASS (163)**- EAM - Extended activity module**

Basic function
DTC Analysis
DTC EraseMemory
Data Analysis
Actuation Test
ECU Information Display

Bug Fixed

- 360° - Camera
- AAC - Automatic air conditioning
- AAC-FR - Operating unit
- AB - Airbag
- ABS/ESP - Electronic stability program
- AGW - Audio gateway
- AHE - Trailer recognition
- AIRMATIC PLUS
- AMG DRIVE UNIT
- AMG Performance Media
- AML - Ambiance light
- AMLAB-L - Actuation module / LED exterior lighting / left front
- AMLAB-R - Actuation module / LED exterior lighting / right front
- AS - Alarm siren
- ASSYST Active Service System
- ASSYST PLUS - PLUS Active Service System
- ATA - ATA [EDW]/tow-away/interior protection
- AUDIO/COMAND
- AVE-H - Rear audio video unit
- BAS - Brake assist
- BNS/BMS - Battery sensor
- BSA - Belt-driven starter/alternator
- CGW - Central gateway
- CM - Compass module
- Compressed Natural Gas Control Module
- COU [ZBE] - Audio/COMAND operating unit
- CSHV - Crash sensor/high-voltage battery
- CTEL/TEL - Cellular/Mobile telephone
- DAB/SDAR - Digital/Satellite radio
- DAS - Drive authorization system
- DCM-FL - Door control module front left
- DCM-FR - Door control module front right
- DCM-RL - Door control module rear left
- DCM-RR - Door control module rear right
- D-FOL - Display in left rear passenger
- D-FOR - Display in right rear passenger
- Drive Kit Plus - Drive kit for iPhone(R)
- DSI - Direct select interface
- DS-LF/AMKS-LF - Dynamic/Active seat
- DS-LR/AMKS-LR - Dynamic/Active seat
- DSP/PPAMKS - Pneumatic pump for seat
- DS-RF/AMKS-RF - Dynamic/Active seat
- DS-RR/AMKS-RR - Dynamic/Active seat
- DTA - Mbrace or TELEAID/GPS Box
- DTCCO - Tachograph
- DTR - DISTRONIC
- DVD player

G-CLASS (461)**- DAS - Drive authorization system**

Basic function
DTC Analysis
DTC EraseMemory
ECU Information Display

V-CLASS (414)**- ABS/ESP - Electronic stability program**

Basic function
DTC Analysis
DTC EraseMemory
ECU Information Display

V-CLASS (414)**- ATA - ATA [EDW]/tow-away/interior protection**

Basic function
DTC Analysis
DTC EraseMemory
ECU Information Display

V-CLASS (414)**- IC - Instrument cluster**

Basic function
DTC Analysis
DTC EraseMemory
ECU Information Display

V-CLASS (414)**- KG/RFL - KEYLESS GO/Radio frequency locking/Electric central locking**

Basic function
DTC Analysis
DTC EraseMemory
ECU Information Display

V-CLASS (414)**- PTS - Parktronic system**

Basic function

- EFB - Electric parking brake
- EKMK - Electric refrigerant compressor
- ELC - Level control
- Electric drive control unit
- EMPI - Electronic Motor Pump Inverter
- ERA - Electric fold down backrest system
- ES - Electrical power steering
- ESA Driver - Electric seat adjustment Driver
- ESA Front passenger - Electric seat adjustment Front passenger
- ESA-R - Electric seat adjustment rear
- ESM - Electronic selector module
- ETC - Electronic transmission control
- EZS/EIS - Electronic ignition lock
- FLANFS - Fire extinguishing system and emergency fresh air system
- FSCU/FSCU-L - Control unit Fuel pump
- FSCU-R - Control unit fuel pump
- Fuel cell control unit
- Fuse and relay module - Fuse and relay modules
- HAQ - Interwheel differential lock at rear axle
- HB - Heater booster
- HBF - Rear control panel
- Headlamp/Headlamp-L - Headlamp control unit
- Headlamp-R - Headlamp control unit
- Head-up display
- HFPM - Haptic accelerator pedal module
- High-temperature coolant pump control unit
- HKS - Tailgate control
- HMI GW - User interface CAN bus
- HS - Seat heater
- HS/AIRSCARF - Seat heater/Air scarf system
- HSG - Hybrid control unit
- HSW/LRH - Steering wheel heater
- Hydrogen tank control unit
- IC - Instrument cluster
- ICI - InCar Internet
- IRS-VL - Left side intelligent radar sensor system
- IRS-VR - Right side intelligent radar sensor system
- ISM - Intelligent servo module
- ISP - Interior rearview mirror
- KAB - Camera cove
- KBE-H/REAR AC - Rear air conditioning
- KG/RFL - KEYLESS GO/Radio frequency locking/Electric central locking
- LAE [LAA] - Loading floor automatically extendable
- LCP/HBF - Lower/Rear control panel
- Left rear ESE - Left electrical seat adjustment
- ME/CDI/CNG - Engine control unit
- MFK - Multifunction camera
- MFL - Steering wheel shift buttons
- MIF/UCI - Media interface
- MKL-HL - Rear left multicontour backrest
- MKL-HR - Rear right multicontour backrest
- MTAS - Mobile phone cradle
- Multifunction control unit
- NAV - Navigation module
- NBR-LF - Left front range radar
- NBR-LR/IRS-HLA - Left rear range radar
- NBR-RF - Right front range radar
- NBR-RR/IRS-HRA - Right rear range radar
- NSA - Night View Assist
- OCP - Overhead control panel
- PSD/MS - Sliding roof control
- PTCU - Common powertrain controller
- PTS - Parktronic system
- RCM - Rear control module
- RD - Radio
- REDC/RWT - Rear end door control module
- RevETR-LF - Left front reversible emergency tensioning retractor
- RevETR-RF - Right front reversible emergency tensioning retractor
- RFK - Backup camera
- Right rear ESE - Right electrical seat adjustment
- RVC/VDS - Convertible roof control
- SAM-F/SAM-D - Signal acquisition and actuation module front/driver side
- SAM-P- Passenger-side signal acquisition and actuation module
- SAM-R/BSN - Rear signal acquisition and actuation module/Battery sensor
- SBC - Sensotronic Brake Control
- SCM [MRM] - Steering column module
- SCR - Selective catalytic reduction
- SG-AWF - Collision prevention assist
- SG-DDW - DC/DC converter control unit
- SG-EM - Power electronics
- SG-EM-A - Electric motor control unit A
- SG-EM-B - Electric motor control unit B
- SG-LML-VL - LED matrix of left front lamp unit
- SG-LML-VR - LED matrix of right front lamp unit
- SG-MSND - Engine sound
- SGR - Radar sensors control unit
- SOUND - Sound system
- Sound generator for exhaust system
- STL - Left electric sliding door
- STR - Right electric sliding door
- Suspension
- System diagnosis
- TLC/GTO - Garage door opener
- TPAD - Touchpad
- TPM - Tire pressure monitor
- TSG - Driver door
- TSG-ML - Left center door control unit
- TSG-MR - Right center door control unit
- TSTH/STH - Stationary heater with remote control
- Tuner - Standard tuner

- TV - TV tuner
- UCP - Upper control panel
- VCS - Voice control
- VECU - Power monitoring control unit
- VG - Transfer case
- VP - Vacuum pump brake booster
- WSS - Weight sensing system
- ZAN - Audio/COMAND display

- Accumulator depressurization
- Clutch drain
- Production/Service final calibration
- Clutch self-calibration enable
- Actuator base adjustment
- Clutch replacement
- Electropump replacement
- Delete statistical data

[Back to Index](#)

FIAT / ALFA ROMEO / LANCIA

New system added

TRW MY13 ABS/ESP

- Basic function
 - DTC Analysis
 - Data Analysis
 - Actuation Test
 - ECU Information Display
- Support function
 - Lateral and longitudinal acceleration sensor calibration
 - Gearbox type recognition

AISIN AW6F25 Automatic Gearbox

- Basic function
 - DTC Analysis
 - Data Analysis
 - Actuation Test
 - ECU Information Display
- Support function
 - Gearbox lever position learn
 - Self-adaptation reset

TRW Electric Steering

- Basic function
 - DTC Analysis
 - Data Analysis
 - Actuation Test
 - ECU Information Display
- Support function
 - Position sensor calibration

Marelli SELESPEED/DDCT CFC8TDW Automatic Gearbox

- Basic function
 - DTC Analysis
 - Data Analysis
 - Actuation Test
 - ECU Information Display
- Support function

Instrument Panel Continental

- Basic function
 - DTC Analysis
 - Data Analysis
 - Actuation Test
 - ECU Information Display
- Support function
 - Activate seat belt alarm

Instrument Panel Visteon

- Basic function
 - DTC Analysis
 - Data Analysis
 - Actuation Test
 - ECU Information Display
- Support function
 - Deactivate seat belt alarm

Bosch EDC15 Diesel Injection (2.4)

- Basic function
 - DTC Analysis
 - Data Analysis
 - Actuation Test
 - ECU Information Display
- Support function
 - Cruise control Re-Learn

Bosch EDC16C39 CF5/EOBD Diesel Injection (1.6, 2.0)

- Basic function
 - DTC Analysis
 - Data Analysis
 - Actuation Test
 - ECU Information Display
- Support function
 - Oil change (only for version with DPF)
 - Reset self-learned functions
 - Particle filter replacement (only for version with DPF)
 - Particle filter regeneration
 - Glow plug preheating circuit test
 - Neutral signal learn
 - Injector programming

Bosch Motronic Me7.9.10 CF5/EOBD Injection

- Basic function

DTC Analysis
Data Analysis
Actuation Test
ECU Information Display

- Support function
 - Oil change (only for version with DPF)
 - Reset ECU
 - Reset accelerator pedal adaptives
 - Throttle body self learning
 - Brake switch learn
 - Air conditioning self learning
 - Clutch pedal learn
 - Reset learn flag wheel tooth

Marelli 6JF EOBD Diesel Injection (1.3)

- Basic function
 - DTC Analysis
 - Data Analysis
 - Actuation Test
 - ECU Information Display
- Support function
 - Injector programming
 - Self-adaptation reset

New ID added

Body Computer Delphi/Marelli
CONTINENTAL Airbag (Ep - PROXI)
Allied MY97 Airbag
Bosch ABS 9.0
Bosch ABS 8.0
Body Computer Marelli(192)
Body Computer Marelli(188)
Body Computer Marelli(323)
Body Computer Delphi (312)
AISIN TIP-System Automatic Gearbox
TRW Electric Power Steering
Magnet Marelli IAW 4AF
Magnet Marelli IAW 5NF
Magnet Marelli IAW 7GF Injection
Bosch Motronic M1.5.5 Injection
Bosch Motronic ME 2.1
Bosch Motronic Me7.9.10
Hitachi MPI injection
Bosch Motronic ME 3.1 EOBD
Magnet Marelli IAW 4SF
Delphi MT27E Injection
TRW MY97 Airbag
Denso climate control
Marelli SELESPEED CFC319 Automatic Gearbox
Convergence Marelli/Microsoft
Driver's Door TRW
Parking control valeo
Parking control valeo II
Instrument Panel Marelli

Instrument Panel Marelli G1
Instrument Panel Marelli II
Marelli SELESPEED CFC208F Automatic Gearbox

[Back to Index](#)

PEUGEOT**607R Vehicle Added**

Engine (EDC15C2)

- Basic function
 - DTC Analysis
 - Data Analysis
 - Actuation Test
 - ECU Information

Engine (SID201 UHZ)

- Basic function
 - DTC Analysis
 - Data Analysis
 - Actuation Test
 - ECU Information
- Special Function
 - Forced Regeneration Of The Particle Filter Vehicle Stationary
 - Replacement Of The Particle Emission Filter
 - Change of EGR Valve
 - Replacement Of The Additive Reservoir Of Pump Or Pipes
 - Filling Of The Additive Reservoir
 - Top Up Diesel Additive Tank
 - Replacement of diesel additive tank and fuel tank

Engine (3FZ MM6LP)

- Basic function
 - DTC Analysis
 - Data Analysis
 - Actuation Test
 - ECU Information
- Special Function
 - Re-centring of autoadaptive systems

Engine (3FY MM6LPB)

- Basic function
 - DTC Analysis
 - Data Analysis
 - Actuation Test
 - ECU Information
- Special Function
 - Re-centring of autoadaptive systems

Engine (EDC16CP39 4HT)

- Basic function
 - DTC Analysis
 - Data Analysis
 - Actuation Test
 - ECU Information
- Special Function
 - Forced regeneration vehicle stationary
 - Replacement of the additive reservoir of the pump or of the pipes
 - Replacement of the particle emission filter
 - Filling of the diesel additive adding reservoir
 - Replacement of the diesel additive reservoir of the pump or of the pipes
 - EGR electrovalve replacement
 - Filling of the additive reservoir
 - Initialisation of the EGR valve
 - Initialisation of the turbocharger2 turbine valve(VT2)
 - Initialisation of the EGR butterfly
 - Initialisation of the air flow sensor
 - Initialisation of the engine ECU
 - O2 sensor initialisation
 - EGR butterfly replacement
 - Replacement of the turbocharger turbine valve 2

Engine (EDC16CP39 4HP)

- Basic function
 - DTC Analysis
 - Data Analysis
 - Actuation Test
 - ECU Information
- Special Function
 - Forced regeneration vehicle stationary
 - Replacement of the additive reservoir of the pump or of the pipes
 - Replacement of the particle emission filter
 - Filling of the diesel additive adding reservoir
 - Replacement of the diesel additive reservoir of the pump or of the pipes
 - EGR electrovalve replacement
 - Filling of the additive reservoir
 - Initialisation of the EGR valve
 - Initialisation of the turbocharger2 turbine valve(VT2)
 - Initialisation of the EGR butterfly
 - Initialisation of the air flow sensor
 - Initialisation of the engine ECU
 - O2 sensor initialisation
 - EGR butterfly replacement
 - Replacement of the turbocharger turbine valve 2

Gearbox ECU (AM6 Euro5)

- Basic function
 - DTC Analysis
 - Data Analysis

- Actuation Test
- ECU Information

Gearbox ECU (AT6 Euro5)

- Basic function
 - DTC Analysis
 - Data Analysis
 - Actuation Test
 - ECU Information

Gearbox ECU (CFC300P)

- Basic function
 - DTC Analysis
 - Data Analysis
 - Actuation Test
 - ECU Information

Gearbox ECU (AL4)

- Basic function
 - DTC Analysis
 - Data Analysis
 - Actuation Test
 - ECU Information

Gearbox ECU (BVA_AM6_AT6_UDS)

- Basic function
 - DTC Analysis
 - Data Analysis
 - Actuation Test
 - ECU Information
- Special Function
 - Programming of the neutral position
 - Replacement of the automatic gearbox oil

Diesel additive function (ADDGO3)

- Basic function
 - DTC Analysis
 - Data Analysis
 - Actuation Test
 - ECU Information
- Special Function
 - Cleaning or replacement of the particulate emission filter
 - Filling of the reservoir+ light of the low additive level warning light
 - Replacement of the metering pump or replacement of the reservoir

ABS or ESP ECU (ESP8_BOSCH)

- Basic function
 - DTC Analysis
 - Data Analysis
 - Actuation Test
 - ECU Information

- Special Function
 - Calibration of the steering wheel angle sensor
 - Air Bleeding
 - Longitudinal Acceleration Sensor Calibration

ABS or ESP ECU (90 ESP)

- Basic function
 - DTC Analysis
 - Data Analysis
 - Actuation Test
 - ECU Information
- Special Function
 - Bleeding
 - Calibration of the steering wheel angle sensor
 - Longitudinal acceleration sensor calibration
 - Replacement of the brake pads
 - First activation of the electric parking brake
 - Replacement of the rear right motorised brake caliper
 - Replacement of the rear left motorised brake caliper
 - Replacement of the electric parking brake RIGHT-hand actuator
 - Replacement of the electric parking brake LEFT-hand actuator
 - Defragmenting of the ESP ecu memory
 - Reactivation of automatic application of the electric parking brake
 - Deactivation of the automatic application of the EPB function

ABS or ESP ECU (ESP MK 100)

- Basic function
 - DTC Analysis
 - Data Analysis
 - Actuation Test
 - ECU Information
- Special Function
 - Bleeding of the hydraulic block ESP MK100
 - Calibration of the gyrometer / accelerometer sensor
 - Replacement of the ESP ECU

Built-In system interface

- Basic function
 - DTC Analysis
 - ECU Information
- Special Function
 - Reset to zero of the counter for the number of restarts

Airbag (RBG_UDS)

- Basic function
 - DTC Analysis
 - Data Analysis
 - ECU Information

- Special Function
 - Locking
 - Unlocking

Airbag (SAC_AUTOLIV)

- Basic function
 - DTC Analysis
 - Data Analysis
 - ECU Information
- Special Function
 - Configuration
 - Locking
 - Unlocking

Power steering (GEP)

- Basic function
 - DTC Analysis
 - Data Analysis
 - Actuation Test
 - ECU Information

Power steering (DAE_BVH2)

- Basic function
 - DTC Analysis
 - Data Analysis
 - ECU Information

Engine relay unit

- Basic function
 - DTC Analysis

Trailer relay unit

- Basic function
 - DTC Analysis

Parking assistance

- Basic function
 - DTC Analysis
 - Data Analysis
 - ECU Information

Instrument panel

- Basic function
 - DTC Analysis
 - Data Analysis
 - Actuation Test
 - ECU Information
- Special Function
 - Service zero reset

Telematic unit or audio navigation (SMEG_PLUS)

- Basic function
 - DTC Analysis
 - Data Analysis

Actuation Test ECU Information	Air conditioning <ul style="list-style-type: none">- Basic function DTC Analysis Data Analysis Actuation Test ECU Information
Telematic unit or audio navigation (BOITIER_TELEMATIQUE) <ul style="list-style-type: none">- Basic function DTC Analysis Data Analysis Actuation Test ECU Information	Driver's door module <ul style="list-style-type: none">- Basic function DTC Analysis Data Analysis Actuation Test ECU Information
Radio <ul style="list-style-type: none">- Basic function DTC Analysis Data Analysis Actuation Test ECU Information	Passenger door module <ul style="list-style-type: none">- Basic function DTC Analysis Data Analysis Actuation Test ECU Information
Multifunction screen (Type 'C'(Dot matrix)) <ul style="list-style-type: none">- Basic function DTC Analysis Data Analysis Actuation Test ECU Information	Anti-theft alarm <ul style="list-style-type: none">- Basic function DTC Analysis Data Analysis Actuation Test ECU Information
- Special Function Configuration and display mode Configuration of options Remote Control Configuration Customer language configuration Configuration of the customer parameter setting menu	CD changer External CD player <ul style="list-style-type: none">- Basic function DTC Analysis Actuation Test ECU Information
Multifunction screen (Type 'C colour'(Dot matrix)) <ul style="list-style-type: none">- Basic function DTC Analysis ECU Information	Rain and light sensor <ul style="list-style-type: none">- Basic function DTC Analysis ECU Information
- Special Function Customer configuration Vehicle configuration Configuration of the personalisation menu	
Hands free kit Portable unit <ul style="list-style-type: none">- Basic function DTC Analysis Data Analysis Actuation Test ECU Information	2008 Vehicle Added
Control under the steering wheel <ul style="list-style-type: none">- Basic function DTC Analysis Data Analysis Actuation Test ECU Information	Engine (9HP - DV6DTED 92 CV) <ul style="list-style-type: none">- Basic function DTC Analysis Data Analysis Actuation Test ECU Information
	- Special Function Forced Regeneration Of The Particle Filter Vehicle Stationary Replacement Of The Particle Emission Filter Initialisation Of The 4 Diesel Injectors

- Replacement of 4 injectors
- Change of EGR Valve
- Replacement Of The EGR Exchanger
- Change Of Air Mixer
- Replacement Of The Turbo
- Replacement Of The Additive Reservoir Of Pump Or
- Pipes
 - Replacement Of The High Pressure Pump Or
- Regulation Valve
 - Replacement Of The Exhaust Manifold
 - Replacement Of The Cylinder Head
 - Replacement Of The Diesel High Pressure Rail
 - Filling Of The Diesel Additive Tank
 - Replacement Of The Oxygen Sensor
- Engine (8HR - DV4CTED - 70 CV)
 - Basic function
 - DTC Analysis
 - Data Analysis
 - Actuation Test
 - ECU Information
 - Special Function
 - Forced Regeneration Of The Particle Filter Vehicle
- Stationary
 - Replacement Of The Particle Emission Filter
 - Initialisation Of The 4 Diesel Injectors
 - Replacement of 4 injectors
 - Change of EGR Valve
 - Replacement Of The EGR Exchanger
 - Change Of Air Mixer
 - Replacement Of The Turbo
 - Replacement Of The Additive Reservoir Of Pump Or
- Pipes
 - Replacement Of The High Pressure Pump Or
- Regulation Valve
 - Replacement Of The Exhaust Manifold
 - Replacement Of The Cylinder Head
 - Replacement Of The Diesel High Pressure Rail
 - Filling Of The Diesel Additive Tank
 - Replacement Of The Oxygen Sensor
- Engine (MEV17_4_2 EP6C)
 - Basic function
 - DTC Analysis
 - Data Analysis
 - Actuation Test
 - ECU Information
 - Special Function
 - Initialisation of auto adaptative
 - Motorised throttle unit
 - Upstream and downstream oxygen sensors
 - Accelerator pedal sensor
 - Injectors
 - Catalytic converter
- Fuel sender/pump module
- Inlet and exhaust camshaft phase sensor
- Inlet and exhaust camshaft dephasing electrovalve
- Inlet pressure sensor
- Variable valve lift motor
- Variable valve lift system position sensor
- Canister discharge electrovalve
- Timing
- Engine (HDI_SID807_BR2_9HD)
 - Basic function
 - DTC Analysis
 - Data Analysis
 - Actuation Test
 - ECU Information
 - Special Function
 - Replacement of Injector
 - Initialisation of diesel injector
 - Forced regeneration vehicle stationary
 - Change of high pressure pump with its fuel flow regulator
 - Replacement of the EGR valve
 - Change of air mixer
 - Replacement of the turbo
 - Replacement of the air flow sensor
 - Replacement of the engine block without the air flow sensor
 - Replacement of the engine block with the air flow sensor
 - Replacement of the additive reservoir of the pump or of the pipes
 - Replacement of the particle emission filter
 - Filling of the diesel additive adding reservoir
 - Replacement of the oxygen sensor
- Engine (HMY)
 - Basic function
 - DTC Analysis
 - Data Analysis
 - Actuation Test
 - ECU Information
 - Special Function
 - Initialising the auto adaptive
 - Matching
 - Replacement of the motorised butterfly housing
 - Replacement of the accelerator pedal
 - Replacement of injectors
 - Replacement of the exhaust camshaft dephasing solenoid valve
 - Replacement of the inlet camshaft dephasing solenoid valve
 - Engine speed sensor programming procedure
 - Temporary reactivation of the stop and start function(For a maximum distance of 10 km)

Engine (HMZ)

- Basic function
 - DTC Analysis
 - Data Analysis
 - Actuation Test
 - ECU Information
- Special Function
 - Initialising the auto adaptive Matching
 - Replacement of the motorised butterfly housing
 - Replacement of the accelerator pedal
 - Replacement of injectors
 - Replacement of the exhaust camshaft dephasing solenoid valve
 - Replacement of the inlet camshaft dephasing solenoid valve
 - Engine speed sensor programming procedure
 - Temporary reactivation of the stop and start function(For a maximum distance of 10 km)

Engine (5FV MED 17_4_2 EURO 5)

- Basic function
 - DTC Analysis
 - Data Analysis
 - Actuation Test
 - ECU Information
- Special Function
 - Initialisation of auto adaptive

Engine (5FN MED 17_4_2 EURO 5)

- Basic function
 - DTC Analysis
 - Data Analysis
 - Actuation Test
 - ECU Information
- Special Function
 - Initialisation of auto adaptive

Engine (5FU MEVD 17_4_2 EURO 5)

- Basic function
 - DTC Analysis
 - Data Analysis
 - Actuation Test
 - ECU Information
- Special Function
 - Initialisation of auto adaptive

Engine (EDC17C60)

- Basic function
 - DTC Analysis
 - Data Analysis
 - Actuation Test
 - ECU Information

- Special Function

- Replacement of the EGR valve
- Replacement of 4 injectors
- Filling of the additive reservoir or pouch
- Programming the air mixer stops
- Programming the EGR valve stops
- Programming of the stops of the turbocharger
- Cleaning the EGR valve
- Particle filter regeneration
- Regeneration of the denox catalytic converter
- Reinitialization of the denox system faults
- Reinitialization following replacement of the urea injector
 - Forcing of the stop and start
 - Filling of the urea reservoir
 - Draining and filling of the urea solution reservoir
 - Replacement of the low pressure fuel pump+ of the fuel filter or of the pipes
 - Replacement of the high pressure pump
 - Replacement of the air mixer
 - Replacement of the turbocharger
 - Replacement of the diesel additive reservoir+ of the pump or of the pipes
 - Particle filter replacement
 - Replacement of the NOX sensor
 - Replacement of the precatlyser
 - Replacement of the deNOX catalytic converter
 - Replacement of the urea injector
 - Replacement of the denox system reservoir+ gauge-pump module or pipes
 - Replacement of the cylinder block
 - Replacement of the engine flywheel
 - Replacement of the battery
 - Replacement of the clutch
 - Replacement of the flowmeter

Engine (ENGINE TYPE 42 : EB2DTS ENGINE WITH 5-SPEED MANUAL GEARBOX)

- Basic function
 - DTC Analysis
 - Data Analysis
 - Actuation Test
 - ECU Information

Engine (ENGINE TYPE 44 : EB2DTS ENGINE WITH 6-SPEED MANUAL GEARBOX)

- Basic function
 - DTC Analysis
 - Data Analysis
 - Actuation Test
 - ECU Information

Engine (MEVD17_4_4)

- Basic function

DTC Analysis
Data Analysis
Actuation Test
ECU Information
- Special Function
Replacement of the motorised butterfly housing
Replacement of starter motor
Replacement of the clutch
Initialisation of the autoadaptive values
Temporary reactivation of the stop and start function
(for a maximum distance of 10 km)
Work on the ancillaries battery
Replacement of the inlet camshaft dephaser
Work on the timing belt
Replacement of the ancillaries battery
Replacement of the alternator
Replacement of the exhaust camshaft dephaser

Engine (MED17_4_4)

- Basic function
DTC Analysis
Data Analysis
Actuation Test
ECU Information
- Special Function
Replacement of the motorised butterfly housing
Replacement of starter motor
Replacement of the exhaust manifold
Replacement of the turbocharger
Replacement of the engine flywheel
Replacement of the clutch
Initialisation of the autoadaptive values
Temporary reactivation of the stop and start function
(for a maximum distance of 10 km)
Work on the ancillaries battery
Replacement of one or more petrol injectors
Replacement of the inlet camshaft dephaser
Work on the timing belt
Cylinder head replacement
Replacement of the ancillaries battery
Replacement of the alternator
Replacement of the turbocharging pressure
regulation valve

Engine (NFP)

- Basic function
DTC Analysis
Data Analysis
Actuation Test
ECU Information

Engine (NFN)

- Basic function
DTC Analysis

Data Analysis
Actuation Test
ECU Information

Engine (V34.4 ESSENCE)

- Basic function
DTC Analysis
Data Analysis
Actuation Test
ECU Information
- Special Function
Motorised throttle unit
Accelerator pedal sensor
Injectors
Initializing the autoadaptives
Oxygen sensors
Engine speed sensor or engine speed sensor target
Mechanical components relating to engine
combustion

Engine (V34.4 FLEX FUEL)

- Basic function
DTC Analysis
Data Analysis
Actuation Test
ECU Information
- Special Function
Motorised throttle unit
Accelerator pedal sensor
Injectors
Initializing the autoadaptives
Oxygen sensors
Engine speed sensor or engine speed sensor target
Mechanical components relating to engine
combustion

Engine (V34.5 ESSENCE)

- Basic function
DTC Analysis
Data Analysis
Actuation Test
ECU Information
- Special Function
Motorised throttle unit
Accelerator pedal sensor
Injectors
Initializing the autoadaptives
Oxygen sensors
Engine speed sensor or engine speed sensor target
Mechanical components relating to engine
combustion

Engine (V34.5 FLEX FUEL)

- Basic function

DTC Analysis Data Analysis Actuation Test ECU Information - Special Function Motorised throttle unit Accelerator pedal sensor Injectors Initializing the autoadaptives Oxygen sensors Engine speed sensor or engine speed sensor target Mechanical components relating to engine combustion	- Basic function DTC Analysis Data Analysis Actuation Test ECU Information
Engine (ME745_EC5) - Basic function DTC Analysis Data Analysis Actuation Test ECU Information - Special Function Initialisation of auto adaptative	Automatic gearbox (CFC300P) - Basic function DTC Analysis Data Analysis Actuation Test ECU Information
Parking aid - Basic function DTC Analysis Data Analysis Actuation Test ECU Information	Automatic gearbox (BVA_AM6) - Basic function DTC Analysis Data Analysis Actuation Test ECU Information
Air conditioning - Basic function DTC Analysis Data Analysis Actuation Test ECU Information	Automatic gearbox (BVA AM6_AT6_EURO5) - Basic function DTC Analysis Data Analysis Actuation Test ECU Information - Special Function Programming of the neutral position Replacement of the automatic gearbox oil
Instrument panel - Basic function DTC Analysis Data Analysis Actuation Test ECU Information	ABS or ESP ECU (ESP 81) - Basic function DTC Analysis Data Analysis Actuation Test ECU Information - Special Function Calibration of the steering wheel angle sensor Air Bleeding Longitudinal Acceleration Sensor Calibration
Controls on the steering wheel - Basic function DTC Analysis Data Analysis Actuation Test ECU Information - Special Function Replacement parts	ABS or ESP ECU (ESP_MK100) - Basic function DTC Analysis Data Analysis Actuation Test ECU Information - Special Function Bleeding of the hydraulic block ESP MK100
Automatic gearbox (BVA_AL4)	Airbag - Basic function DTC Analysis Data Analysis

ECU Information

- Special Function
- Configuration
- Locking
- Unlocking

Built-in systems interface

- Basic function
- DTC Analysis
- ECU Information
- Special Function
- Reset to zero of the counter for the number of restarts

Power steering electric pump unit

- Basic function
- DTC Analysis
- Data Analysis
- Actuation Test
- ECU Information

Dynamic headlamp height adjuster

- Basic function
- DTC Analysis
- Data Analysis
- Actuation Test
- ECU Information
- Special Function
- Calibration

Trailer relay unit

- Basic function
- DTC Analysis

Engine relay unit

- Basic function
- DTC Analysis

Display

- Basic function
- DTC Analysis
- Actuation Test
- ECU Information

Telematics

- Basic function
- DTC Analysis
- Data Analysis
- Actuation Test
- ECU Information

Anti-theft alarm

- Basic function
- DTC Analysis

Data Analysis

- Actuation Test
- ECU Information

Seat belts not fastened LED unit

- Basic function
- Actuation Test
- ECU Information

Rain-sunlight sensor

- Basic function
- DTC Analysis
- ECU Information

Multiplexed control panel

- Basic function
- DTC Analysis
- Data Analysis
- Actuation Test
- ECU Information

Controls on the steering wheel

- Basic function
- DTC Analysis
- Data Analysis
- Actuation Test
- ECU Information
- Special Function
- Replacement parts

[Back to Index](#)**CITROEN****DS4 Vehicle Added**

Engine (5FW MEV 17.4)

- Basic function
- DTC Analysis
- Data Analysis
- Actuation Test
- ECU Information
- Special Function
- Initialisation of auto adaptative

Engine (8FS MEV 17.4)

- Basic function
- DTC Analysis
- Data Analysis
- Actuation Test
- ECU Information
- Special Function

Initialisation of auto adaptative

Engine (5FS MEV 17.4 EVO)

- Basic function
 - DTC Analysis
 - Data Analysis
 - Actuation Test
 - ECU Information
- Special Function
 - Initialisation of auto adaptative
 - Motorised throttle unit
 - Upstream and downstream oxygen sensors
 - Accelerator pedal sensor
 - Injectors
 - Catalytic converter
 - Fuel sender/pump module
 - Inlet and exhaust camshaft phase sensor
 - Inlet and exhaust camshaft dephasing electrovalve
 - Inlet pressure sensor
 - Variable valve lift motor
 - Variable valve lift system position sensor
 - Canister discharge electrovalve
 - Timing

Engine (MED17_4_4)

- Basic function
 - DTC Analysis
 - Data Analysis
 - Actuation Test
 - ECU Information

Engine (ME749_EC5)

- Basic function
 - DTC Analysis
 - Data Analysis
 - Actuation Test
 - ECU Information

Engine (8HR DV4CTED 70 CV)

- Basic function
 - DTC Analysis
 - Data Analysis
 - Actuation Test
 - ECU Information
- Special Function
 - Forced Regeneration Of The Particle Filter Vehicle

Stationary

- Replacement Of The Particle Emission Filter
- Change of EGR Valve
- Replacement Of The EGR Exchanger
- Change Of Air Mixer
- Replacement Of The Turbo
- Replacement Of The Additive Reservoir Of Pump Or

Pipes

Replacement Of The High Pressure Pump Or Regulation Valve

- Replacement Of The Exhaust Manifold
- Replacement Of The Cylinder Head
- Replacement Of The Diesel High Pressure Rail
- Filling Of The Diesel Additive Tank
- Replacement Of The Oxygen Sensor

Engine (9HP DV4CTED 70 CV)

- Basic function
 - DTC Analysis
 - Data Analysis
 - Actuation Test
 - ECU Information
- Special Function
 - Forced Regeneration Of The Particle Filter Vehicle

Stationary

- Replacement Of The Particle Emission Filter
- Change of EGR Valve
- Replacement Of The EGR Exchanger
- Change Of Air Mixer
- Replacement Of The Turbo
- Replacement Of The Additive Reservoir Of Pump Or

Pipes

Replacement Of The High Pressure Pump Or Regulation Valve

- Replacement Of The Exhaust Manifold
- Replacement Of The Cylinder Head
- Replacement Of The Diesel High Pressure Rail
- Filling Of The Diesel Additive Tank
- Replacement Of The Oxygen Sensor

Engine (9HP DV6DTED 92 CV)

- Basic function
 - DTC Analysis
 - Data Analysis
 - Actuation Test
 - ECU Information
- Special Function
 - Forced Regeneration Of The Particle Filter Vehicle

Stationary

- Replacement Of The Particle Emission Filter
- Initialisation Of The 4 Diesel Injectors
- Change of EGR Valve
- Replacement Of The EGR Exchanger
- Change Of Air Mixer
- Replacement Of The Turbo
- Replacement Of The Additive Reservoir Of Pump Or

Pipes

Replacement Of The High Pressure Pump Or Regulation Valve

- Replacement Of The Exhaust Manifold
- Replacement Of The Cylinder Head
- Replacement Of The Diesel High Pressure Rail

Filling Of The Diesel Additive Tank
Replacement Of The Oxygen Sensor
Replacement of 4 injectors

Engine (9HJ DV6DTEDM 90 CV)

- Basic function
 - DTC Analysis
 - Data Analysis
 - Actuation Test
 - ECU Information
- Special Function
 - Replacement Of The Particle Emission Filter
 - Initialisation Of The 4 Diesel Injectors
 - Change of EGR Valve
 - Replacement Of The EGR Exchanger
 - Replacement Of The Turbo
 - Replacement Of The High Pressure Pump Or Regulation Valve
 - Replacement Of The Exhaust Manifold
 - Replacement Of The Cylinder Head
 - Replacement Of The Diesel High Pressure Rail
 - Filling Of The Diesel Additive Tank
 - Replacement of 4 injectors

Engine (9HK DV6ETEDM 75 CV)

- Basic function
 - DTC Analysis
 - Data Analysis
 - Actuation Test
 - ECU Information
- Special Function
 - Replacement Of The Particle Emission Filter
 - Initialisation Of The 4 Diesel Injectors
 - Change of EGR Valve
 - Replacement Of The EGR Exchanger
 - Replacement Of The Turbo
 - Replacement Of The High Pressure Pump Or Regulation Valve
 - Replacement Of The Exhaust Manifold
 - Replacement Of The Cylinder Head
 - Replacement Of The Diesel High Pressure Rail
 - Filling Of The Diesel Additive Tank
 - Replacement of 4 injectors

Engine (HNY VD46)

- Basic function
 - DTC Analysis
 - Data Analysis
 - Actuation Test
 - ECU Information
- Special Function
 - Replacement of the exhaust manifold
 - Initialisation of the autoadaptive values
 - Temporary reactivation of the stop and start function

(for a maximum distance of 10 km)

- Work on the ancillaries battery
- Replacement of one or more petrol injectors
- Replacement of the inlet camshaft dephaser
- Replacement of the exhaust camshaft dephaser
- Cylinder head replacement
- Replacement of the turbocharger
- Replacement of the ancillaries battery
- Replacement of starter motor
- Replacement of the clutch
- Replacement of the alternator
- Replacement of the turbocharging pressure regulation valve
- Replacement of the engine flywheel
- Replacement of the accelerator pedal
- Replacement of the motorised butterfly housing

Engine (9HD HDI_SID807_BR2)

- Basic function
 - DTC Analysis
 - Data Analysis
 - Actuation Test
 - ECU Information
- Special Function
 - Replacement of Injector
 - Forced regeneration vehicle stationary
 - Change of high pressure pump with its fuel flow regulator
 - Replacement of the EGR valve
 - Change of air mixer
 - Replacement of the turbo
 - Replacement of the air flow sensor
 - Replacement of the engine block without the air flow sensor
 - Replacement of the engine block with the air flow sensor
 - Replacement of the additive reservoir of the pump or of the pipes
 - Replacement of the particle emission filter
 - Replacement of the oxygen sensor
 - Filling of the diesel additive adding reservoir
 - Initialisation of diesel injector

Engine (SID807)

- Basic function
 - DTC Analysis
 - Data Analysis
 - Actuation Test
 - ECU Information
- Special Function
 - Replacement of Injector
 - Forced regeneration vehicle stationary
 - Change of high pressure pump with its fuel flow regulator

Replacement of the EGR valve
Change of air mixer
Replacement of the turbo
Replacement of the air flow sensor
Replacement of the engine block without the air flow sensor
Replacement of the engine block with the air flow sensor
Replacement of the additive reservoir of the pump or of the pipes
Replacement of the particle emission filter
Replacement of the oxygen sensor
Filling of the diesel additive adding reservoir
Initialisation of diesel injector

Engine (DCM3.5_BR2)

- Basic function
DTC Analysis
Data Analysis
Actuation Test
ECU Information
- Special Function
Forced Regeneration Of The Particle Filter Vehicle Stationary
Change of EGR valve
Change of air mixer
Replacement of the turbo
Replacement of the particle emission filter
Replacement of the oxygen sensor
Replacement of the EGR exchanger
Filling of the diesel additive adding reservoir
Replacement of the ancillary drive belt
Replacement of the exhaust manifold
Air flow sensor replacement
Replacement of the differential pressure sensor
Replacement of the high pressure pump or the flow regulation valve
Replacement of the diesel additive reservoir+ pump/pipes
Replacement of the diesel high pressure rail
Replacement of the additive reservoir+ pump or pipes
Filling of the diesel additive tank
Change of engine block without the flowmeter
Change of engine block with the flowmeter
Replacement of the cylinder head

Engine (9HX EDC16C3)

- Basic function
DTC Analysis
Data Analysis
Actuation Test
ECU Information
- Special Function

EGR mixer butterfly replacement
Electric EGR valve replacement

Engine (9HY EDC16C3)

- Basic function
DTC Analysis
Data Analysis
Actuation Test
ECU Information
- Special Function
EGR mixer butterfly replacement
Electric EGR valve replacement

Engine (9HZ EDC16C3)

- Basic function
DTC Analysis
Data Analysis
Actuation Test
ECU Information
- Special Function
Forced Regeneration Of The Particle Filter Vehicle Stationary
Initialisation of the additive level when filling or replacing the additive reservoir
Replacement Of The Diesel Additive Reservoir Of Pump/Pipes
Replacement Of The Particle Emission Filter
Characterisation of the injectors IMA 4pts
Characterisation of the injectors IMA 5pts
Initialisation Of The 4 Diesel Injectors

Engine (9HV EDC16C3)

- Basic function
DTC Analysis
Data Analysis
Actuation Test
ECU Information
- Special Function
Forced Regeneration Of The Particle Filter Vehicle Stationary
Initialisation of the additive level when filling or replacing the additive reservoir
Replacement Of The Diesel Additive Reservoir Of Pump/Pipes
Replacement Of The Particle Emission Filter
Characterisation of the injectors IMA 4pts
Characterisation of the injectors IMA 5pts
Initialisation Of The 4 Diesel Injectors

Engine (RHR DCM 3.4)

- Basic function
DTC Analysis
Data Analysis
Actuation Test

ECU Information
- Special Function
Forced regeneration vehicle stationary
Replacement of the turbo
Replacement of the additive reservoir of the pump or of the pipes
Replacement of the particle emission filter
Filling of the diesel additive adding reservoir
Forced Regeneration Of The Particle Filter Vehicle moving
Replacement of the diesel additive reservoir of the pump or of the pipes
EGR electrovalve replacement
Air flow sensor replacement
Replacement of the differential pressure sensor
Replacement of the high pressure pump or the flow regulation valve
Initialisation of the EGR electrovalve
Initialisation of the turbo
Initialisation of the differential pressure sensor
Initialisation of the high pressure pump
Initialisation of the air flowmeter

Engine (RHL DCM 3.4)

- Basic function
DTC Analysis
Data Analysis
Actuation Test
ECU Information
- Special Function
Forced regeneration vehicle stationary
Replacement of the turbo
Replacement of the additive reservoir of the pump or of the pipes
Replacement of the particle emission filter
Filling of the diesel additive adding reservoir
Forced Regeneration Of The Particle Filter Vehicle moving
Replacement of the diesel additive reservoir of the pump or of the pipes
EGR electrovalve replacement
Air flow sensor replacement
Replacement of the differential pressure sensor
Replacement of the high pressure pump or the flow regulation valve
Initialisation of the EGR electrovalve
Initialisation of the turbo
Initialisation of the differential pressure sensor
Initialisation of the high pressure pump
Initialisation of the air flowmeter

Engine (RHF DCM 3.4)

- Basic function
DTC Analysis

Data Analysis
Actuation Test
ECU Information
- Special Function
Forced regeneration vehicle stationary
Replacement of the turbo
Replacement of the additive reservoir of the pump or of the pipes
Replacement of the particle emission filter
Filling of the diesel additive adding reservoir
Forced Regeneration Of The Particle Filter Vehicle moving
Replacement of the diesel additive reservoir of the pump or of the pipes
EGR electrovalve replacement
Air flow sensor replacement
Replacement of the differential pressure sensor
Replacement of the high pressure pump or the flow regulation valve
Initialisation of the EGR electrovalve
Initialisation of the turbo
Initialisation of the differential pressure sensor
Initialisation of the high pressure pump
Initialisation of the air flowmeter

Automatic gearbox (BVA_AL4)

- Basic function
DTC Analysis
Data Analysis
Actuation Test
ECU Information

Automatic gearbox (AM6)

- Basic function
DTC Analysis
Data Analysis
Actuation Test
ECU Information

Automatic gearbox (AT6)

- Basic function
DTC Analysis
Data Analysis
Actuation Test
ECU Information

Automatic gearbox (CFC300P)

- Basic function
DTC Analysis
Data Analysis
Actuation Test
ECU Information

Automatic gearbox (BVA AM6_AT6_EURO5)

- Basic function
 - DTC Analysis
 - Data Analysis
 - Actuation Test
 - ECU Information
- Special Function
 - Programming of the neutral position
 - Replacement of the automatic gearbox oil

Multiplexed additive adding pump ECU

- Basic function
 - DTC Analysis
 - Data Analysis
 - Actuation Test
 - ECU Information

Airbag ECU (RBG)

- Basic function
 - DTC Analysis
 - Data Analysis
 - ECU Information
- Special Function
 - Locking
 - Unlocking
 - Configuration

Airbag ECU (RBG_UDS)

- Basic function
 - DTC Analysis
 - Data Analysis
 - ECU Information
- Special Function
 - Locking
 - Unlocking

Built-In system interface

- Basic function
 - DTC Analysis
 - ECU Information
- Special Function
 - Reset to zero of the counter for the number of restarts

ABS or ESP ECU (ABS 81)

- Basic function
 - DTC Analysis
 - Data Analysis
 - Actuation Test
 - ECU Information
- Special Function
 - Calibration of the steering wheel angle sensor
 - Air Bleeding

ABS or ESP ECU (ESP 8.1)

- Basic function
 - DTC Analysis
 - Data Analysis
 - Actuation Test
 - ECU Information
- Special Function
 - Calibration of the steering wheel angle sensor
 - Air Bleeding
 - Longitudinal Acceleration Sensor Calibration

ABS or ESP ECU (90 ESP)

- Basic function
 - DTC Analysis
 - Data Analysis
 - Actuation Test
 - ECU Information
- Special Function
 - Bleeding
 - Calibration of the steering wheel angle sensor
 - Reactivation of automatic application of the electric parking brake
 - Longitudinal acceleration sensor calibration
 - Replacement of the brake pads
 - First activation of the electric parking brake
 - Replacement of the rear right motorised brake caliper
 - Replacement of the rear left motorised brake caliper
 - Replacement of the electric parking brake RIGHT-hand actuator
 - Replacement of the electric parking brake LEFT-hand actuator
 - Defragmenting of the ESP ecu memory
 - Deactivation of the automatic application of the EPB function

ABS or ESP ECU (ESPMK100)

- Basic function
 - DTC Analysis
 - Data Analysis
 - Actuation Test
 - ECU Information
- Special Function
 - Bleeding of the hydraulic block ESP MK100

Power steering electric pump unit

- Basic function
 - DTC Analysis
 - Data Analysis
 - Actuation Test
 - ECU Information

Under inflation detection

- Basic function
 - DTC Analysis

Data Analysis
ECU Information
- Special Function
Read wheel transmitter module identifiers
Write wheel transmitter module identifiers by references
Initialisation of the wheel transmitter modules
Initialisation of a single wheel transmitter module

Dynamic headlamp height adjuster

- Basic function
DTC Analysis
Data Analysis
Actuation Test
ECU Information

Battery charge status unit

- Basic function
Data Analysis
ECU Information

Electric secondary brake

- Basic function
DTC Analysis
Data Analysis
Actuation Test
ECU Information

- Special Function

Brake cable replacement
Electric parking brake replacement

Air conditioning

- Basic function
DTC Analysis
Data Analysis
Actuation Test
ECU Information

Engine relay unit

- Basic function
DTC Analysis
Data Analysis
Actuation Test
ECU Information

Instrument panel

- Basic function
DTC Analysis
Data Analysis
Actuation Test
ECU Information

Control panel dot matrix display

- Basic function

DTC Analysis
Actuation Test
ECU Information

Telematics

- Basic function
DTC Analysis
Data Analysis
Actuation Test
ECU Information

Anti-theft alarm

- Basic function
DTC Analysis
Data Analysis
Actuation Test
ECU Information
- Special Function
Longitudinal acceleration sensor calibration
Steering wheel angle sensor calibration

Anti-lock brake system (ESP BOSCH5.7)

- Basic function
DTC Analysis
Actuation Test
ECU Information

Seat driver position memory module

- Basic function
DTC Analysis
Data Analysis
Actuation Test
ECU Information

Parking assistance

- Basic function
DTC Analysis
Data Analysis
Actuation Test
ECU Information

Driver's door module

- Basic function
DTC Analysis
Data Analysis
Actuation Test
ECU Information

Multiplexed control panel

- Basic function
DTC Analysis
Data Analysis
Actuation Test
ECU Information

Monitoring of the blind spot

- Basic function
 - DTC Analysis
 - Data Analysis
 - Actuation Test
 - ECU Information
- Special Function
 - Configuration
 - Test of the blind spot monitoring function

Controls under the steering wheel

- Basic function
 - DTC Analysis
 - Data Analysis
 - Actuation Test
 - ECU Information

Hands-free starting access electronic module

- Basic function
 - DTC Analysis
 - Data Analysis
 - Actuation Test
 - ECU Information

Electronic key reader

- Basic function
 - DTC Analysis
 - Data Analysis
 - ECU Information

Switch module under the steering wheel

- Basic function
 - DTC Analysis
 - Data Analysis
 - ECU Information

Electric steering lock

- Basic function
 - DTC Analysis
 - Data Analysis
 - Actuation Test
 - ECU Information

DS5 Hybrid 4 Vehicle Added

Engine (DCM35_HY)

- Basic function
 - DTC Analysis
 - Data Analysis
 - Actuation Test
 - ECU Information
- Special Function
 - Forced Regeneration Of The Particle Filter Vehicle

Stationary

- Change of air mixer
- Replacement of the turbo
- Replacement of the engine block without the air flow sensor
- Replacement of the engine block with the air flow sensor
- Replacement of the additive reservoir of the pump or of the pipes
- Replacement of the particle emission filter
- Replacement of the oxygen sensor
- Replacement of the EGR exchanger
- Filling of the diesel additive adding reservoir
- Replacement of the exhaust manifold
- Replacement of the diesel additive reservoir of the pump or of the pipes
- EGR electrovalve replacement
- Air flow sensor replacement
- Replacement of the differential pressure sensor
- Replacement of the high pressure pump or the flow regulation valve
- Replacement of the diesel high pressure rail
- Filling of the diesel additive tank
- Replacement of the cylinder head

Engine (EDC17C60)

- Basic function
 - DTC Analysis
 - Data Analysis
 - Actuation Test
 - ECU Information
- Special Function
 - Replacement of 4 injectors
 - Replacement of the EGR valve
 - Replacement of the turbocharger
 - Replacement of the clutch
 - Replacement of the engine flywheel
 - Programming the air mixer stops
 - Programming the EGR valve stops
 - Programming of the stops of the turbocharger
 - Cleaning the EGR valve
 - Particle filter regeneration
 - Filling of the additive reservoir or pouch
 - Filling of the urea reservoir
 - Draining and filling of the urea solution reservoir
 - Replacement of the high pressure pump
 - Replacement of the low pressure fuel pump+ of the fuel filter or of the pipes
 - Replacement of the air mixer
 - Particle filter replacement
 - Replacement of the precatalyser
 - Replacement of the cylinder block
 - Replacement of the battery
 - Replacement of the flowmeter

Regeneration of the denox catalytic converter
Reinitialization of the denox system faults
Reinitialization following replacement of the urea injector
Forcing of the stop and start
Replacement of the diesel additive reservoir+ of the pump or of the pipes
Replacement of the NOX sensor
Replacement of the deNOX catalytic converter
Replacement of the urea injector
Replacement of the denox system reservoir+ gauge-pump module or pipes

Engine (9HR DV6CTED)

- Basic function
DTC Analysis
Data Analysis
Actuation Test
ECU Information
- Special Function
Replacement of Injector
Initialisation of diesel injector
Forced regeneration vehicle stationary
Change of high pressure pump with its fuel flow regulator
Replacement of the EGR valve
Change of air mixer
Replacement of the turbo
Replacement of the air flow sensor
Replacement of the engine block without the air flow sensor
Replacement of the engine block with the air flow sensor
Replacement of the additive reservoir of the pump or of the pipes
Replacement of the particle emission filter
Replacement of the oxygen sensor

Engine (9HD DV6CTED)

- Basic function
DTC Analysis
Data Analysis
Actuation Test
ECU Information
- Special Function
Replacement of Injector
Initialisation of diesel injector
Forced regeneration vehicle stationary
Change of high pressure pump with its fuel flow regulator
Replacement of the EGR valve
Change of air mixer
Replacement of the turbo
Replacement of the air flow sensor

Replacement of the engine block without the air flow sensor
Replacement of the engine block with the air flow sensor
Replacement of the additive reservoir of the pump or of the pipes
Replacement of the particle emission filter
Replacement of the oxygen sensor

Engine (DCM6.2)

- Basic function
DTC Analysis
Data Analysis
Actuation Test
ECU Information
- Special Function
Replacement of the EGR valve
Replacement of the engine block with the air flow sensor
Replacement of the fuel flow regulator
Replacement of the ancillary drive belt
Replacement of the exhaust manifold
Replacement of the turbocharger
Replacement of starter motor
Replacement of the clutch
Replacement of the engine flywheel
Replacement of the diesel high pressure rail
Programming the air mixer stops
Programming the EGR valve stops
Programming of the stops of the turbocharger
Cleaning the EGR valve
Cleaning the EGR exchanger bypass
Particle filter regeneration
Reinitialisation of the denox system faults
Temporary reactivation of the stop and start function
Filling of the additive reservoir or pouch
Filling of the urea reservoir
Draining and filling of the urea solution reservoir
Replacement of the high pressure pump
Replacement of the low pressure fuel pump+ of the fuel filter or of the pipes
Replacement of the air mixer
Replacement of the particle emission filter
differential pressure sensor
Particle filter replacement
Replacement of the nox sensor
Replacement of the precatalyser
Replacement of the denox catalytic converter
Replacement of the reservoir of the gauge pump module of the denox system pipes or of the urea injector
Replacement of the cylinder block
Replacement of the cylinder head without the air flow sensor
Replacement of the cylinder head with the air flow

sensor

- Replacement of the battery
- Replacement of the flowmeter
- Replacement of the engine block without the

flowmeter

- Replacement of the camshaft
- Replacement of the reversible alternator
- Replacement of the power accumulator or of the voltage retaining device

Engine (5FV MED17.4.2 EURO 5)

- Basic function
 - DTC Analysis
 - Data Analysis
 - Actuation Test
 - ECU Information
- Special Function
 - Initialisation of auto adaptative

Engine (5FN MED17.4.2 EURO 5)

- Basic function
 - DTC Analysis
 - Data Analysis
 - Actuation Test
 - ECU Information
- Special Function
 - Initialisation of auto adaptative

Engine (5FM MED17.4.2 EURO 5)

- Basic function
 - DTC Analysis
 - Data Analysis
 - Actuation Test
 - ECU Information
- Special Function
 - Initialisation of auto adaptative

Engine (5FE MED17.4.2 EURO 5)

- Basic function
 - DTC Analysis
 - Data Analysis
 - Actuation Test
 - ECU Information
- Special Function
 - Initialisation of auto adaptative

Engine (5FU MEVD17.4.2 EURO 5)

- Basic function
 - DTC Analysis
 - Data Analysis
 - Actuation Test
 - ECU Information
- Special Function
 - Initialisation of auto adaptative

Motorised throttle unit

- Upstream and downstream oxygen sensors
- Accelerator pedal sensor
- Injectors
- Catalytic converter
- Fuel sender/pump module
- Inlet and exhaust camshaft phase sensor
- Inlet and exhaust camshaft dephasing electrovalve
- Inlet pressure sensor
- Variable valve lift motor
- Variable valve lift system position sensor
- Canister discharge electrovalve
- Timing

Engine (BC MEVD17.4.2 EURO 5)

- Basic function
 - DTC Analysis
 - Data Analysis
 - Actuation Test
 - ECU Information
- Special Function
 - Initialisation of auto adaptative
 - Motorised throttle unit
 - Upstream and downstream oxygen sensors
 - Accelerator pedal sensor
 - Injectors
 - Catalytic converter
 - Fuel sender/pump module
 - Inlet and exhaust camshaft phase sensor
 - Inlet and exhaust camshaft dephasing electrovalve
 - Inlet pressure sensor
 - Variable valve lift motor
 - Variable valve lift system position sensor
 - Canister discharge electrovalve
 - Timing

Engine (MED17.4.4)

- Basic function
 - DTC Analysis
 - Data Analysis
 - Actuation Test
 - ECU Information
- Special Function
 - Replacement of the exhaust manifold
 - Initialisation of the autoadaptive values
 - Temporary reactivation of the stop and start function (for a maximum distance of 10 km)
 - Work on the ancillaries battery
 - Replacement of one or more petrol injectors
 - Replacement of the inlet camshaft dephaser
 - Cylinder head replacement
 - Replacement of the turbocharger
 - Replacement of the ancillaries battery
 - Replacement of starter motor

Replacement of the clutch
Replacement of the alternator
Replacement of the turbocharging pressure regulation valve
Replacement of the engine flywheel
Replacement of the motorised butterfly housing
Work on the timing belt

Engine (MED17.4.4 EP8)

- Basic function
DTC Analysis
Data Analysis
Actuation Test
ECU Information

- Special Function
Replacement of the exhaust manifold
Initialisation of the autoadaptive values
Temporary reactivation of the stop and start function (for a maximum distance of 10 km)
Work on the ancillaries battery
Replacement of one or more petrol injectors
Replacement of the inlet camshaft dephaser
Cylinder head replacement
Replacement of the turbocharger
Replacement of the ancillaries battery
Replacement of starter motor
Replacement of the clutch
Replacement of the alternator
Replacement of the turbocharging pressure regulation valve
Replacement of the engine flywheel
Replacement of the motorised butterfly housing
Work on the timing belt

Built-in systems interface

- Basic function
DTC Analysis
Data Analysis
ECU Information

- Special Function
Reset to zero of the counter for the number of restarts

ABS or ESP ECU (ESP 8.1)

- Basic function
DTC Analysis
Data Analysis
Actuation Test
ECU Information

- Special Function
Calibration of the steering wheel angle sensor
Air Bleeding
Longitudinal Acceleration Sensor Calibration

ABS or ESP ECU (90 ESP)

- Basic function
DTC Analysis
Data Analysis
Actuation Test
ECU Information

- Special Function
Bleeding
Calibration of the steering wheel angle sensor
Reactivation of automatic application of the electric parking brake
Longitudinal acceleration sensor calibration
Replacement of the brake pads
First activation of the electric parking brake
Replacement of the rear right motorised brake caliper
Replacement of the rear left motorised brake caliper
Replacement of the electric parking brake RIGHT-hand actuator
Replacement of the electric parking brake LEFT-hand actuator
Defragmenting of the ESP ecu memory
Deactivation of the automatic application of the EPB function

ABS or ESP ECU (ESP MK100)

- Basic function
DTC Analysis
Data Analysis
Actuation Test
ECU Information

- Special Function
Bleeding of the hydraulic block ESP MK100

Automatic gearbox (CFC300P_Hy)

- Basic function
DTC Analysis
Data Analysis
Actuation Test
ECU Information

- Special Function
Learning of the gearbox gate
Programming of the clutch biting point
Initialisation of the transmissibility value
Bleeding of the hydraulic circuit
Depressurisation of the hydraulic circuit
Pressurise the hydraulic circuit

Automatic gearbox (BVA AM6_AT6_UDS)

- Basic function
DTC Analysis
Data Analysis
Actuation Test
ECU Information

- Special Function

Programming of the neutral position
Partial realignment of the programmed values
Full realignment of the programmed values
Replacement of the automatic gearbox oil

Automatic gearbox (CFC300P)

- Basic function
 - DTC Analysis
 - Data Analysis
 - Actuation Test
 - ECU Information

Automatic gearbox (BVA AM6_AT6_EURO5)

- Basic function
 - DTC Analysis
 - Data Analysis
 - Actuation Test
 - ECU Information
- Special Function
 - Programming of the neutral position
 - Replacement of the automatic gearbox oil

Power steering

- Basic function
 - DTC Analysis
 - Data Analysis
 - Actuation Test
 - ECU Information

Battery charge status unit

- Basic function
 - Data Analysis
 - ECU Information

Electric secondary brake

- Basic function
 - DTC Analysis
 - Data Analysis
 - Actuation Test
 - ECU Information
- Special Function
 - Brake cable replacement
 - Electric parking brake replacement

Vibrators control ECU

- Basic function
 - DTC Analysis
 - Data Analysis
 - Actuation Test
 - ECU Information

Under inflation detection (DSG)

- Basic function
 - DTC Analysis

ECU Information**Under inflation detection (DSG_UDS)**

- Basic function
 - DTC Analysis
 - Data Analysis
 - ECU Information
- Special Function
 - Read wheel transmitter module identifiers
 - Write wheel transmitter module identifiers by references
 - Initialisation of the wheel transmitter modules
 - Initialisation of a single wheel transmitter module

Dynamic headlamp height adjuster

- Basic function
 - DTC Analysis
 - Data Analysis
 - Actuation Test
 - ECU Information

Engine relay unit

- Basic function
 - DTC Analysis

Instrument panel

- Basic function
 - DTC Analysis
 - Data Analysis
 - Actuation Test
 - ECU Information

Control panel dot matrix display

- Basic function
 - DTC Analysis
 - Actuation Test
 - ECU Information

Anti-theft alarm

- Basic function
 - DTC Analysis
 - Data Analysis
 - Actuation Test
 - ECU Information

Control under the steering wheel

- Basic function
 - DTC Analysis
 - Data Analysis
 - Actuation Test
 - ECU Information

Hands free starting access electronic module

- Basic function

DTC Analysis Data Analysis Actuation Test ECU Information	High head vision (VTH) - Basic function DTC Analysis Data Analysis Actuation Test ECU Information
Electronic key reader - Basic function DTC Analysis Data Analysis ECU Information	Air conditioning - Basic function DTC Analysis Data Analysis Actuation Test ECU Information
Multifunction screen (TYPE 'C' (DOT matrix)) - Basic function DTC Analysis Data Analysis Actuation Test ECU Information - Special Function Configuration and display mode Configuration of options Remote Control Configuration Customer language configuration Configuration of the customer parameter setting menu	Telematic unit or audio navigation - Basic function DTC Analysis Data Analysis Actuation Test ECU Information
Multifunction screen (TYPE 'C colour'(DOT matrix)) - Basic function DTC Analysis ECU Information - Special Function Customer configuration Vehicle configuration Configuration of the personalisation menu	Airbag ECU - Basic function DTC Analysis Data Analysis ECU Information - Special Function Locking Unlocking
Multifunction video camera(CMF) - Basic function DTC Analysis Data Analysis Actuation Test ECU Information	Electric steering lock - Basic function DTC Analysis Data Analysis Actuation Test ECU Information
Parking assistance - Basic function DTC Analysis Data Analysis ECU Information	Hybrid mode selector - Basic function Data Analysis Actuation Test ECU Information
High head vision (VTH_UDS) - Basic function DTC Analysis Data Analysis Actuation Test ECU Information	Traction battery ECU - Basic function DTC Analysis Data Analysis Actuation Test ECU Information - Special Function Reactivation
	Hybrid control ECU 1 - Basic function

DTC Analysis
Data Analysis
Actuation Test
ECU Information
- Special Function
Reactivation
Replacement of the accessories drive belt
Forced starting by starter mode
Exit from factory mode

Hybrid control ECU 2

- Basic function
DTC Analysis
Data Analysis
ECU Information

Radio (RD4)

- Basic function
DTC Analysis
Data Analysis
Actuation Test
ECU Information

Radio (RD45)

- Basic function
DTC Analysis
Data Analysis
Actuation Test
ECU Information

Driver's door module

- Basic function
DTC Analysis
Data Analysis
Actuation Test
ECU Information

Under inflation detection (DSG)

- Basic function
DTC Analysis
ECU Information

Under inflation detection (DSG_UDS)

- Basic function
DTC Analysis
Data Analysis
ECU Information
- Special Function
Read wheel transmitter module identifiers
Write wheel transmitter module identifiers by references
Initialisation of the wheel transmitter modules
Initialisation of a single wheel transmitter module

Windscreen wiper
- Basic function
Actuation Test
ECU Information

Rain-sunlight sensor
- Basic function
DTC Analysis
ECU Information

[Back to Index](#)**VOLVO****System search Function enhanced**

- After System search, engine selection will be available.

[Back to Index](#)**PORSCHE****911 (997) (2005 ~ 2011)**

- DTC List added

Cayenne (958) (from 2011)

- DTC List added

Cayenne (957) (up to 2010)

- DTC List added

Panamera(970)

- DTC List added

[Back to Index](#)**FORD USA****Edge 2.0L EcoBoost - Gas Turbocharged Direct Injection 2017 ~ Vehicle Added**

- PCM(PowerTrain Control Module)
- ABS(Anti-Lock Brake System)
- ACM(Audio Control Module)
- APIM(Accessory Protocol Interface Module)
- BCM(Body Control Module)
- BECM-B(Battery Energy Control Module B)

- C-CM(Cruise Control Module)
- DACM-C(Digital Audio Control Module C)
- DCDC(DC to DC Converter Control Module)
- DDM(Driver's Door Module)
- DSM(Driver's Seat Module)
- DSP(Digital Signal Processing Module)
- FCDIM(Front Control/Display Interface Module)
- FCIM(Front Controls Interface Module)
- GPSM(Global Positioning System Module)
- GWM(Gateway Module A)
- HSWM(Heated Steering Wheel Module)
- HUD(Head Up Display)
- IPC(Instrument Panel Control Module)
- IPM-A(Image Processing Module A)
- IPM-B(Image Processing Module B)
- OCSM(Occupant Classification System Module)
- PAM(Parking Aid Module)
- PDM(Passenger's Door Module)
- PSCM(Power Steering Control Module)
- RCM(Restraint Control Module)
- RGTM(Rear Gate/Trunk Module)
- RTM(Radio Transceiver Module)
- SASM(Steering Angle Sensor Module)
- SCCM(Steering Column Control Module)
- SCM-E(Seat Control Module E)
- SECM(Steering Effort Control Module)
- SOD-L(Side Obstacle Detection Control Module Left)
- SOD-R(Side Obstacle Detection Control Module Right)
- TRM(Trailer Module)

Excursion 5.4L Other ~ 2003 Vehicle Added

- PCM(Powertrain Control Module)
- ABS(Anti-Lock Brake System)
- DSM(Driver's Seat Module)
- EATC(Electronic Automatic Temperature Control)
- GEM(Generic Electronic Module)
- HEC(Hybrid Electrical Cluster)
- OTC(Overhead Trip Computer)
- PAM(Parking Aid Module)
- PATS(Passive Anti Theft System)
- VSM(Vehicle Security Module)

Explorer 3.5L TiVCT 2016 ~ Vehicle Added

- PCM(Powertrain Control Module)
- ABS(Anti-Lock Brake System)
- ACM(Audio Control Module)
- APIM(Accessory Protocol Interface Module)
- ATCM(All Terrain Control Module)
- BCM(Body Control Module)
- BECM-B(Battery Energy Control Module B)
- C-CM(Cruise Control Module)
- DACM-C(Digital Audio Control Module C)
- DDM(Driver's Door Module)
- DSM(Driver's Seat Module)

- DSP(Digital Signal Processing Module)
- FCDIM(Front Control/Display Interface Module)
- FCIM-B(Front Controls Interface Module B)
- GFM(Generic Function Module)
- GPSM(Global Positioning System Module)
- GWM(Gateway Module A)
- HCM(Headlamp Control Module)
- HSWM(Heated Steering Wheel Module)
- HUD(Head Up Display)
- HVAC(Heating Ventilation Air Conditioning)
- IPC(Instrument Panel Control Module)
- IPM-A(Image Processing Module A)
- IPM-B(Image Processing Module B)
- OCSM(Occupant Classification System Module)
- PAM(Parking Aid Module)
- PDM(Passenger's Door Module)
- PSCM(Power Steering Control Module)
- RCM(Restraint Control Module)
- RGTM(Rear Gate/Trunk Module)
- RHVAC(Rear Heating Ventilation Air Conditioning)
- RTM(Radio Transceiver Module)
- SCCM(Steering Column Control Module)
- SCM-E(Seat Control Module E)
- SCM-G(Seat Control Module G)
- SCM-H(Seat Control Module H)
- SOD-L(Side Obstacle Detection Control Module Left)
- SOD-R(Side Obstacle Detection Control Module Right)
- TCU(Telematic Control Unit Module)

E-Series 4.6L 2V 2004 ~ 2006 Vehicle Added

- PCM(PowerTrain Control Module)
- ABS(Anti-Lock Brake System)
- RCM(Restraint Control Module)
- IC(Instrument Cluster)
- RAP(Remote Anti-Theft/Personality Module)

F150 4.2L Other ~ 2004 Vehicle Added

- PCM(Powertrain Control Module)
- ABS(Anti-Lock Brake System)
- GEM(Generic Electronic Module)
- IC(Instrument Cluster)
- RAP(Remote Anti-Theft/Personality Module)
- RCM(Restraint Control Module)

TAURUS 3.5L EcoBoost - Gas Turbocharged Direct Injection 2010 ~ 2016 Vehicle Added

- BCM(Body Control Module)
- HSWM(Heated Steering Wheel Module)
- IPM-A(Image Processing Module A)
- RTM(Radio Transceiver Module)
- SCCM(Steering Column Control Module)

Transit 3.2L Duratorq-Turbo Diesel Common Rail Injection 2015 ~Vehicle Added

- PCM(PowerTrain Control Module)

- ABS(Anti-Lock Brake System)
- ACM(Audio Control Module)
- APIM(Accessory Protocol Control Module)
- BCM(Body Control Module)
- FCDIM(Front Control/Display Interface Module)
- FCIM(Front Controls Interface Module)
- GPSM(Global Positioning System Module)
- IPC(Instrument Panel Control Module)
- IPM-A(Image Processing Module A)
- PAM(Parking Aid Module)
- RDCM(Reductant Control Module)
- RCM(Restraint Control Module)
- SASM(Steering Angle Sensor Module)
- TBC(Trailer Brake Control Module)
- TCM(Transmission Control Module)
- TRM(Trailer Module)

[Back to Index](#)

FORD USA (LINCOLN)

Navigator 5.4L 3V 2005 ~ 2006 System Added

- 4X4(4x4 Control Module)
- TCM(Transmission Control Module)

[Back to Index](#)

GM USA

New Model & System added

- Chevrolet

Colorado 2017 Add

- Powertrain
- 2.5L LCV Engine Control Module Automatic Transmission
- 2.5L LCV Engine Control Module Manual Transmission
- 2.5L LCV Transmission Control Module
- 2.5L LKH Engine Control Module Automatic Transmission
- 2.5L LKH Engine Control Module Manual Transmission
- 2.5L LP2 Engine Control Module Automatic Transmission
- 2.5L LP2 Engine Control Module Manual Transmission
- 2.5L LP2 Transmission Control Module
- 2.8L LWN Engine Control Module Automatic Transmission
- 2.8L LWN Engine Control Module Manual Transmission

- 2.8L LWN Transmission Control Module
- 3.6L LFX Engine Control Module Automatic Transmission
- 3.6L LFX Engine Control Module Manual Transmission
- 3.6L LFX Transmission Control Module
- 3.6L LGZ Engine Control Module Automatic Transmission
- 3.6L LGZ Engine Control Module Manual Transmission
- 3.6L LGZ Transmission Control Module
- Transfer Case Control Module

-Chassis

- Electronic Brake Control Module Belt Driven Electric Power Steering (NJ2)
- Electronic Brake Control Module Other
- Multi-Axis Acceleration Sensor Module
- Power Steering Control Module
- Steering Wheel Angle Sensor Module

-Body

- Body Control Module
- Serial Data Gateway Module
- Inflatable Restraint Sensing and Diagnostic Module
- Instrument Cluster
- Radio Controls
- HVAC Controls
- Trailer Interface Control Module
- Radio (IO5)
- Radio (IO6)
- Radio (IOB)
- Radio (IP1)
- Human Machine Interface Control Module
- Telematics Communication Interface Control Module
- HVAC Control Module Auto Single (C68)
- HVAC Control Module Manual Single (C67)
- Right Side Object Detection Control Module
- Left Side Object Detection Control Module
- Parking Assist Control Module
- Frontview Camera Module

Equinox 2017 Add

- Powertrain
- 1.5L LYX Engine Control Module Automatic Transmission
- 1.5L LYX Engine Control Module Manual Transmission
- 1.5L LYX Transmission Control Module
- 2.4L LEA Engine Control Module
- 2.4L LEA Transmission Control Module
- 3.6L LFX Engine Control Module
- 3.6L LFX Transmission Control Module
- Rear Differential Clutch Control Module

-Chassis

- Electronic Brake Control Module

Multi-Axis Acceleration Sensor Module
Power Steering Control Module
Steering Wheel Angle Sensor Module

-Body

Body Control Module Mechanical Liftgate
Body Control Module Power Liftgate (TB5)
Inflatable Restraint Sensing and Diagnostic Module
Passenger Presence Module
Instrument Cluster
Radio
Telematics Communication Interface Control Module
Version 9.7
Telematics Communication Interface Control Module
Version 10
HVAC Control Module Auto Single (C68)
HVAC Control Module Manual Single (C67)
Liftgate Control Module
Seat Memory Control Module
Right Side Object Detection Control Module
Left Side Object Detection Control Module
Parking Assist Control Module
Frontview Camera Module
Steering Column Lock Control Module

Express 2017 Add

-Powertrain

2.8L LWN Engine Control Module
2.8L LWN Transmission Control Module
4.8L L20 Engine Control Module
4.8L L20 Transmission Control Module
6.0L L96 Engine Control Module
6.0L L96 Transmission Control Module
6.0L LC8 Engine Control Module
6.0L LC8 Transmission Control Module
6.6L LGH Engine Control Module
6.6L LGH Glow Plug Control Module
6.6L LGH Transmission Control Module

-Chassis

Electronic Brake Control Module

-Body

Body Control Module
Inflatable Restraint Sensing and Diagnostic Module
Instrument Cluster
Chime Alarm Control Module
Base Radio
Navigation Radio
Uplevel Radio
Digital Radio Receiver Control Module
Telematics Communication Interface Control Module
Auxiliary Heater Control Module
Remote Control Door Lock Receiver

Parking Assist Control Module
Theft Deterrent Module

S10 2017 Add

-Powertrain

2.4L LP8 Engine Control Module
2.5L LCV Engine Control Module Automatic
Transmission
2.5L LCV Engine Control Module Manual Transmission
2.5L LCV Transmission Control Module
2.8L LWN Engine Control Module Automatic
Transmission
2.8L LWN Engine Control Module Manual Transmission
2.8L LWN Transmission Control Module
Transfer Case Control Module

-Chassis

Electronic Brake Control Module
Multi-Axis Acceleration Sensor Module
Power Steering Control Module
Steering Wheel Angle Sensor Module

-Body

Body Control Module
Serial Data Gateway Module
Inflatable Restraint Sensing and Diagnostic Module
Instrument Cluster
Radio Controls
HVAC Controls
Trailer Interface Control Module
Radio (IO5)
Radio (IO6)
Radio (IOB)
Radio (IP1)
Amplifier
Human Machine Interface Control Module
Telematics Communication Interface Control Module
HVAC Control Module Auto Single (C68)
HVAC Control Module Manual Single (C67)
Right Side Object Detection Control Module
Left Side Object Detection Control Module
Parking Assist Control Module
Frontview Camera Module

Silverado 2017 Add

-Powertrain

4.3L LV1 Engine Control Module
4.3L LV3 Engine Control Module
4.3L LV3 Transmission Control Module
5.3L L83 Engine Control Module
5.3L L83 Transmission Control Module 6 Speed (MYC)
5.3L L83 Transmission Control Module 8 Speed (M5U)
5.3L L8B Engine Control Module
5.3L L8B Transmission Control Module 8 Speed (M5X)

6.0L L96 Engine Control Module
6.0L L96 Transmission Control Module
6.0L LC8 Engine Control Module
6.0L LC8 Transmission Control Module
6.2L L86 Engine Control Module
6.2L L86 Transmission Control Module 6 Speed (MYC)
6.2L L86 Transmission Control Module 8 Speed (M5U)
6.6L L5P Engine Control Module
6.6L L5P Glow Plug Control Module
6.6L L5P Transmission Control Module
6.6L L5P Power Take-Off Control Module
Transfer Case Version Two Wheel Drive
Transfer Case Version Two Speed Electric Shift (NQF)
Transfer Case Version Two Speed Manual Shift (NQG)
Transfer Case Version Two Speed Switch Activated (NQH)
Transfer Case Version Single Speed Switch Activated (NP0)

-Chassis

Electronic Brake Control Module
Power Steering Control Module
Steering Wheel Angle Sensor Module
Suspension Control Module

-Body

Body Control Module
Serial Data Gateway Module
Inflatable Restraint Sensing and Diagnostic Module Version (EPG)
Inflatable Restraint Sensing and Diagnostic Module Version Not Equipped
Passenger Presence Module
Instrument Cluster Head-Up Display (UV6)
Instrument Cluster Head-Up Display Not Equipped
Radio Controls
HVAC Controls
Trailer Interface Control Module
Radio
Amplifier
Media Disc Player
Human Machine Interface Control Module
Telematics Communication Interface Control Module Version 9.7
Telematics Communication Interface Control Module Version 10
HVAC Auto Control Dual Zone (CJ2)
HVAC Manual Control Single Zone (C67)
Seat Memory Control Module - Driver
Assist Step Control Module
Parking Assist Control Module
Frontview Camera Module

Suburban 2017 Add**-Powertrain**

5.3L L83 Engine Control Module
5.3L L83 Transmission Control Module
6.0L L96 Engine Control Module
6.0L L96 Transmission Control Module
Transfer Case Version Two Wheel Drive
Transfer Case Version Two Speed Switch Activated (NQH)
Transfer Case Version Single Speed Switch Activated (NP0)

-Chassis

Electronic Brake Control Module
Distance Sensing Cruise Control Module
Parking Brake Control Module
Power Steering Control Module
Steering Wheel Angle Sensor Module
Suspension Control Module

-Body

Body Control Module
Serial Data Gateway Module
Inflatable Restraint Sensing and Diagnostic Module
Passenger Presence Module
Instrument Cluster
Radio Controls
HVAC Controls
Video Processing Control Module
Radio
Amplifier
Rear Audio Control Module
Media Disc Player
Human Machine Interface Control Module
Telematics Communication Interface Control Module
HVAC Control Module
Liftgate Control Module
Seat Memory Control Module - Passenger
Seat Memory Control Module - Driver
Keyless Entry Control Module
Assist Step Control Module
Left Side Object Detection Control Module
Parking Assist Control Module
Frontview Camera Module
Steering Column Lock Control Module

Tahoe 2017 Add**-Powertrain**

5.3L L83 Engine Control Module
5.3L L83 Transmission Control Module
6.2L L86 Engine Control Module
6.2L L86 Transmission Control Module
Transfer Case Version Two Wheel Drive
Transfer Case Version Two Speed Switch Activated (NQH)

Transfer Case Version Single Speed Switch Activated (NP0)

-Chassis

Electronic Brake Control Module
Distance Sensing Cruise Control Module
Parking Brake Control Module
Power Steering Control Module
Steering Wheel Angle Sensor Module
Suspension Control Module

-Body

Body Control Module
Serial Data Gateway Module
Inflatable Restraint Sensing and Diagnostic Module
Passenger Presence Module
Instrument Cluster
Radio Controls
HVAC Controls
Video Processing Control Module
Radio
Amplifier
Rear Audio Control Module
Media Disc Player
Human Machine Interface Control Module
Telematics Communication Interface Control Module
HVAC Control Module
Liftgate Control Module
Seat Memory Control Module - Passenger
Seat Memory Control Module - Driver
Keyless Entry Control Module
Assist Step Control Module
Left Side Object Detection Control Module
Parking Assist Control Module
Frontview Camera Module
Steering Column Lock Control Module

Trailblazer 2017 Add

-Powertrain

2.5L LKH Engine Control Module Automatic Transmission
2.5L LKH Engine Control Module Manual Transmission
2.5L LP2 Engine Control Module Automatic Transmission
2.5L LP2 Engine Control Module Manual Transmission
2.5L LP2 Transmission Control Module
2.8L LWN Engine Control Module Automatic Transmission
2.8L LWN Engine Control Module Manual Transmission
2.8L LWN Transmission Control Module
3.6L LFX Engine Control Module Automatic Transmission
3.6L LFX Engine Control Module Manual Transmission
3.6L LFX Transmission Control Module

Transfer Case Control Module

-Chassis

Electronic Brake Control Module Belt Driven Electric Power Steering (NJ2)
Electronic Brake Control Module Other
Multi-Axis Acceleration Sensor Module
Power Steering Control Module
Steering Wheel Angle Sensor Module

-Body

Body Control Module
Serial Data Gateway Module
Inflatable Restraint Sensing and Diagnostic Module
Instrument Cluster
Radio Controls
HVAC Controls
Trailer Interface Control Module
Radio (IO5)
Radio (IO6)
Radio (IOB)
Radio (IP1)
Human Machine Interface Control Module
Telematics Communication Interface Control Module
HVAC Control Module Auto Single (C68)
HVAC Control Module Manual Single (C67)
Right Side Object Detection Control Module
Left Side Object Detection Control Module
Parking Assist Control Module
Frontview Camera Module

Traverse 2017 Add

-Powertrain

3.6L LLT Engine Control Module
3.6L LLT Transmission Control Module
Rear Differential Clutch Control Module

-Chassis

Electronic Brake Control Module

-Body

Body Control Module Mechanical Liftgate
Body Control Module Power Liftgate (TB5)
Inflatable Restraint Sensing and Diagnostic Module
Passenger Presence Module
Instrument Cluster
Radio
Rear Audio Control Module
Digital Radio Receiver Control Module
Personal Audio Link Control Module
Telematics Communication Interface Control Module
HVAC Auto Control Dual Zone (CJ2)
HVAC Manual Control Single Zone (C67)
Driver Door Switch Panel Control Module

Passenger Door Switch Panel Control Module
Liftgate Control Module
Right Side Object Detection Control Module
Left Side Object Detection Control Module
Remote Control Door Lock Receiver
Parking Assist Control Module
Frontview Camera Module
Theft Deterrent Module

- Buick

Cascada 2017 Add

-Powertrain
Engine Control Module
Transmission Control Module
Chassis Control Module

-Chassis

Electronic Brake Control Module
Parking Brake Control Module
Multi-Axis Acceleration Sensor Module
Power Steering Control Module
Steering Wheel Angle Sensor Module

-Body

Body Control Module
Inflatable Restraint Sensing and Diagnostic Module
Passenger Presence Module
Instrument Cluster
Headlamp Control Module
Radio
Digital Radio Receiver Control Module
Multimedia Player Interface Module
Telematics Communication Interface Control Module
HVAC Control Module
Front Seat Heating Control Module
Folding Top Control Module
Parking Assist Control Module
Frontview Camera Module

Enclave 2017 Add

-Powertrain
3.6L LLT Engine Control Module
3.6L LLT Transmission Control Module
Rear Differential Clutch Control Module

-Chassis

Electronic Brake Control Module

-Body

Body Control Module
Inflatable Restraint Sensing and Diagnostic Module
Passenger Presence Module
Instrument Cluster
Headlamp Control Module

Radio

Rear Audio Control Module
Digital Radio Receiver Control Module
Personal Audio Link Control Module
Telematics Communication Interface Control Module
HVAC Control Module
Driver Door Switch Panel Control Module
Passenger Door Switch Panel Control Module
Liftgate Control Module
Right Side Object Detection Control Module
Left Side Object Detection Control Module
Remote Control Door Lock Receiver
Parking Assist Control Module
Frontview Camera Module
Theft Deterrent Module

Encore 2017 Add

-Powertrain
1.4L LE2 Engine Control Module Automatic Transmission
1.4L LE2 Engine Control Module Manual Transmission
1.4L LE2 Transmission Control Module
1.4L LEF Engine Control Module Automatic Transmission
1.4L LEF Engine Control Module Manual Transmission
1.4L LEF Transmission Control Module
1.4L LUV Engine Control Module Automatic Transmission
1.4L LUV Engine Control Module Manual Transmission
1.4L LUV Transmission Control Module
Chassis Control Module
Rear Differential Clutch Control Module

-Chassis

Electronic Brake Control Module
Power Steering Control Module
Steering Wheel Angle Sensor Module

-Body

Body Control Module
Serial Data Gateway Module
Inflatable Restraint Sensing and Diagnostic Module
Passenger Presence Module
Instrument Cluster Enhanced Driver Information Center (UDD)
Instrument Cluster Enhanced Monochrome Driver Information Center (UDC)
Headlamp Control Module
Trailer Interface Control Module
Radio
Amplifier
Human Machine Interface Control Module
Telematics Communication Interface Control Module
Version 9.7

Telematics Communication Interface Control Module
Version 10
HVAC Control Module Auto Dual (CJ2)
HVAC Control Module Manual Single (C67)
Seat Memory Control Module
Front Seat Heating Control Module
Keyless Entry Control Module
Left Side Object Detection Control Module
Parking Assist Control Module
Frontview Camera Module
Steering Column Lock Control Module

Envision 2017 Add**-Powertrain**

1.5L L FV Engine Control Module Automatic
Transmission
1.5L L FV Engine Control Module Manual Transmission
1.5L L FV Transmission Control Module
2.0L L T G Engine Control Module Automatic
Transmission
2.0L L T G Engine Control Module Manual Transmission
2.0L L T G Transmission Control Module
2.5L L C V Engine Control Module Automatic
Transmission
2.5L L C V Engine Control Module Manual Transmission
2.5L L C V Transmission Control Module
Rear Differential Clutch Control Module Version 0501
Rear Differential Clutch Control Module Version 0502

-Chassis

Electronic Brake Control Module Vehicle Stability
System Equipped
Electronic Brake Control Module Vehicle Stability
System Not Equipped
Multi-Axis Acceleration Sensor Module
Power Steering Control Module
Steering Wheel Angle Sensor Module
Suspension Control Module

-Body

Body Control Module Headlamp Type Halogen (T4A TT4)
Body Control Module Headlamp Type High Intensity
Discharge (T4F TT2 TT6 TT7 TT8)
Serial Data Gateway Module
Inflatable Restraint Sensing and Diagnostic Module
Passenger Presence Module
Instrument Cluster
Radio Controls
HVAC Controls
Active Safety Control Module
Video Processing Control Module
Headlamp Control Module
Radio
Amplifier

Human Machine Interface Control Module
Telematics Communication Interface Control Module
Version 9.7
Telematics Communication Interface Control Module
Version 10
HVAC Auto Control Dual Zone (CJ2)
HVAC Auto Control Tri Zone (CJ4)
Liftgate Control Module
Seat Memory Control Module - Driver
Keyless Entry Control Module
Right Side Object Detection Control Module
Left Side Object Detection Control Module
Parking Assist Control Module
Frontview Camera Module
Steering Column Lock Control Module
Accessory DC/AC Power Inverter Module
Long Range Radar Sensor Module

Lacrosse 2017 Add**-Powertrain**

2.5L L H N Engine Control Module Automatic
Transmission
2.5L L H N Engine Control Module Manual Transmission
2.5L L H N Transmission Control Module
3.6L L G X Engine Control Module Automatic
Transmission
3.6L L G X Engine Control Module Manual Transmission
3.6L L G X Transmission Control Module
Chassis Control Module
Transmission Range Control Module
Rear Differential Clutch Control Module

-Chassis

Electronic Brake Control Module
Power Steering Control Module
Suspension Control Module

-Body

Body Control Module Headlamp Type Halogen (T4A TT4)
Body Control Module Headlamp Type High Intensity
Discharge (T4F TT2 TT6 TT7 TT8)
Body Control Module Headlamp Type Light Emitting
Diode (T4L)
Serial Data Gateway Module
Inflatable Restraint Sensing and Diagnostic Module
Passenger Presence Module
Instrument Cluster
Radio Controls
HVAC Controls
Headlamp Control Module
Radio
Amplifier
Media Disc Player
Infotainment Control Touchpad

Human Machine Interface Control Module
Telematics Communication Interface Control Module
Version 9.7
Telematics Communication Interface Control Module
Version 10
HVAC Control Module
Seat Memory Control Module - Driver
Keyless Entry Control Module
Right Side Object Detection Control Module
Left Side Object Detection Control Module
Parking Assist Control Module
Frontview Camera Module
Long Range Radar Sensor Module

Regal 2017 Add

-Powertrain

2.0L LTG Engine Control Module
2.0L LTG Transmission Control Module
2.4L LEA Engine Control Module
2.4L LEA Transmission Control Module
Rear Differential Clutch Control Module

-Chassis

Electronic Brake Control Module
Distance Sensing Cruise Control Module
Parking Brake Control Module
Power Steering Control Module
Steering Wheel Angle Sensor Module
Suspension Control Module

-Body

Body Control Module Headlamp Type Halogen (T4A TT4)
Body Control Module Headlamp Type High Intensity
Discharge (T4F TT2 TT6 TT7 TT8)
Inflatable Restraint Sensing and Diagnostic Module
Passenger Presence Module
Instrument Cluster
Radio Controls
HVAC Controls
Radio
Amplifier
Media Disc Player
Human Machine Interface Control Module
Telematics Communication Interface Control Module
Version 9.7
Telematics Communication Interface Control Module
Version 10
HVAC Control Module
Seat Memory Control Module
Keyless Entry Control Module
Left Side Object Detection Control Module
Parking Assist Control Module
Frontview Camera Module

Verano 2017 Add

-Powertrain

2.4L LEA Engine Control Module
2.4L LEA Transmission Control Module
Chassis Control Module

-Chassis

Electronic Brake Control Module
Parking Brake Control Module
Multi-Axis Acceleration Sensor Module
Power Steering Control Module Version TRW Belt Drive
- EPS
Power Steering Control Module Version PSCM - EPS
Power Steering Control Module Version PSCM - VES
Steering Wheel Angle Sensor Module

-Body

Body Control Module
Inflatable Restraint Sensing and Diagnostic Module
Passenger Presence Module
Instrument Cluster
Active Safety Control Module
Radio
Multimedia Player Interface Module
Telematics Communication Interface Control Module
Version 9.7
Telematics Communication Interface Control Module
Version 10
HVAC Control Module Auto Dual (CJ2)
HVAC Control Module Manual Single (C67)
Front Seat Heating Control Module
Keyless Entry Control Module
Right Side Object Detection Control Module
Left Side Object Detection Control Module
Parking Assist Control Module
Frontview Camera Module
Long Range Radar Sensor Module

- Cadillac

ATS 2017 Add

-Powertrain

2.0L LTG Engine Control Module Automatic
Transmission
2.0L LTG Engine Control Module Manual Transmission
2.0L LTG Transmission Control Module
2.5L LCV Engine Control Module Automatic
Transmission
2.5L LCV Engine Control Module Manual Transmission
2.5L LCV Transmission Control Module
3.6L LF4 Engine Control Module Automatic
Transmission
3.6L LF4 Engine Control Module Manual Transmission
3.6L LF4 Transmission Control Module
3.6L LGX Engine Control Module Automatic

Transmission

3.6L LGX Engine Control Module Manual Transmission
3.6L LFX Transmission Control Module
Transfer Case Control Module

-Chassis

Electronic Brake Control Module Conti MK100
Electronic Brake Control Module Bosch GEN 9
Parking Brake Control Module
Multi-Axis Acceleration Sensor Module
Power Steering Control Module
Steering Wheel Angle Sensor Module
Suspension Control Module

-Body

Body Control Module Halogen
Body Control Module High Intensity Discharge (T4F TT2 TT6 TT7 TT8)
Serial Data Gateway Module
Inflatable Restraint Sensing and Diagnostic Module
Passenger Presence Module
Pedestrian Impact Detection Module
Seat Belt Retractor Motor Module - Left
Seat Belt Retractor Motor Module - Right
Instrument Cluster Enhanced Driver Info Center (UDD)
Instrument Cluster Full Screen Display (UDV)
Radio/HVAC Control
Vehicle Performance Data Recorder
Active Safety Control Module
Trailer Interface Control Module
Radio
Amplifier
Media Disc Player
Human Machine Interface Control Module
Navigation Control Module
Telematics Communication Interface Control Module Version 9.7
Telematics Communication Interface Control Module Version 10
HVAC Control Module
Seat Memory Control Module - Passenger
Seat Memory Control Module - Driver
Keyless Entry Control Module Coupe
Keyless Entry Control Module Sedan
Right Side Object Detection Control Module
Left Side Object Detection Control Module
Parking Assist Control Module
Frontview Camera Module
Steering Column Lock Control Module
Long Range Radar Sensor Module
Left Front Short Range Radar Sensor Module
Right Front Short Range Radar Sensor Module
Rear Short Range Radar Sensor Module

CT6 2017 Add**-Powertrain**

2.0L LTG RWD Plug-In Hybrid (MRD) Engine Control Module
2.0L LTG RWD Plug-In Hybrid (MRD) Transmission Control Module
2.0L LTG RWD Plug-In Hybrid (MRD) Powertrain Control Module
2.0L LTG RWD Plug-In Hybrid (MRD) Powertrain Control Module 2
2.0L LTG RWD Plug-In Hybrid (MRD) Drive Motor Control Module 1
2.0L LTG RWD Plug-In Hybrid (MRD) Drive Motor Control Module 2
2.0L LTG Engine Control Module Auto Transmission 8 Speed (M5N)
2.0L LTG Transmission Control Module 8 Speed (M5N)
3.0L LGW Engine Control Module
3.0L LGW Transmission Control Module
3.6L LGX Engine Control Module
3.6L LGX Transmission Control Module
Transfer Case Control Module

-Chassis

Electronic Brake Control Module
Brake Booster Control Module
Power Steering Control Module
Rear Wheel Steering Control Module
Suspension Control Module

-Body

Body Control Module
Serial Data Gateway Module
Pedestrian Alert Sound Control Module
Inflatable Restraint Sensing and Diagnostic Module
Passenger Presence Module
Seat Belt Retractor Motor Module - Left
Seat Belt Retractor Motor Module - Right
Instrument Cluster Enhanced Multi-Color Driver Information Center (UHS)
Instrument Cluster Full Screen Display (UDV)
Night Vision Camera Control Module
Radio Controls
HVAC Controls
Active Safety Control Module
Video Processing Control Module
Headlamp Control Module
Trailer Interface Control Module
Radio
Amplifier
Media Disc Player
Infotainment Control Touchpad
Human Machine Interface Control Module
Navigation Control Module

Telematics Communication Interface Control Module
HVAC Control Module
Electric A/C Compressor Control Module
Liftgate Control Module
Seat Memory Control Module - Passenger
Seat Memory Control Module - Left Rear
Seat Memory Control Module - Driver
Seat Memory Control Module - Right Rear
Keyless Entry Control Module
Left Side Object Detection Control Module
Parking Assist Control Module
Frontview Camera Module
Steering Column Lock Control Module
Battery Energy Control Module
Accessory DC/AC Power Inverter Module
Long Range Radar Sensor Module
Left Front Short Range Radar Sensor Module
Right Front Short Range Radar Sensor Module
Rear Short Range Radar Sensor Module

CTS 2017 Add

-Powertrain

2.0L LTG Engine Control Module
2.0L LTG Transmission Control Module
3.6L LF3 Engine Control Module
3.6L LF3 Transmission Control Module
3.6L LGX Engine Control Module
3.6L LGX Transmission Control Module
6.2L LT4 Engine Control Module
6.2L LT4 Transmission Control Module
Transfer Case Control Module

-Chassis

Electronic Brake Control Module
Parking Brake Control Module
Multi-Axis Acceleration Sensor Module
Power Steering Control Module
Steering Wheel Angle Sensor Module
Suspension Control Module

-Body

Body Control Module Headlamp Type Halogen
Body Control Module Headlamp Type High Intensity Discharge (T4F TT2 TT6 TT7 TT8)
Serial Data Gateway Module
Inflatable Restraint Sensing and Diagnostic Module
Passenger Presence Module
Pedestrian Impact Detection Module
Seat Belt Retractor Motor Module - Left
Seat Belt Retractor Motor Module - Right
Instrument Cluster Enhanced Driver Info Center (UDD)
Instrument Cluster Full Screen Display (UDV)
Radio/HVAC Control
Vehicle Performance Data Recorder

Active Safety Control Module
Video Processing Control Module
Trailer Interface Control Module
Radio (IO3)
Radio (IO5)
Radio (IO6)
Amplifier
Human Machine Interface Control Module
Navigation Control Module
Telematics Communication Interface Control Module Version 9.7
Telematics Communication Interface Control Module Version 10
HVAC Auto Control Dual Zone (CJ2)
HVAC Auto Control Tri Zone (CJ4)
Seat Memory Control Module - Passenger
Seat Memory Control Module - Driver
Keyless Entry Control Module
Right Side Object Detection Control Module
Left Side Object Detection Control Module
Parking Assist Control Module
Frontview Camera Module
Steering Column Lock Control Module
Long Range Radar Sensor Module
Left Front Short Range Radar Sensor Module
Right Front Short Range Radar Sensor Module
Rear Short Range Radar Sensor Module

Escalade 2017 Add

-Powertrain

Engine Control Module
Transmission Control Module 6 Speed
Transmission Control Module 8 Speed
Transfer Case Version Two Speed Switch Activated (NQH)
Transfer Case Version Single Speed Switch Activated (NP0)

-Chassis

EBCM Distance Sensing (KSG)
EBCM Distance Sensing Not Equipped
Parking Brake Control Module
Multi-Axis Acceleration Sensor Module
Power Steering Control Module
Steering Wheel Angle Sensor Module
Suspension Control Module

-Body

Body Control Module
Serial Data Gateway Module
Inflatable Restraint Sensing and Diagnostic Module (EPG)
Inflatable Restraint Sensing and Diagnostic Module Not Equipped

Passenger Presence Module
Seat Belt Retractor Motor Module - Left
Seat Belt Retractor Motor Module - Right
Instrument Cluster Head-Up Display (UV6)
Instrument Cluster Head-Up Display Not Equipped
Radio/HVAC Control
Video Processing Control Module
Radio
Amplifier
Rear Audio Control Module
Media Disc Player
Human Machine Interface Control Module
Telematics Communication Interface Control Module
HVAC Control Module
Liftgate Control Module
Seat Memory Control Module - Passenger
Seat Memory Control Module - Driver
Keyless Entry Control Module
Assist Step Control Module
Left Side Object Detection Control Module
Parking Assist Control Module
Frontview Camera Module
Steering Column Lock Control Module
Long Range Radar Sensor Module
Left Front Short Range Radar Sensor Module
Right Front Short Range Radar Sensor Module
Left Rear Radar Short Range Sensor Module
Right Rear Short Range Radar Sensor Module

Escalade ESV 2017 Add

-Powertrain
Engine Control Module
Transmission Control Module 6 Speed
Transmission Control Module 8 Speed
Transfer Case Version Two Speed Switch Activated (NQH)
Transfer Case Version Single Speed Switch Activated (NP0)

-Chassis

EBCM Distance Sensing (KSG)
EBCM Distance Sensing Not Equipped
Parking Brake Control Module
Multi-Axis Acceleration Sensor Module
Power Steering Control Module
Steering Wheel Angle Sensor Module
Suspension Control Module

-Body

Body Control Module
Serial Data Gateway Module
Inflatable Restraint Sensing and Diagnostic Module (EPG)
Inflatable Restraint Sensing and Diagnostic Module Not

Equipped
Passenger Presence Module
Seat Belt Retractor Motor Module - Left
Seat Belt Retractor Motor Module - Right
Instrument Cluster Head-Up Display (UV6)
Instrument Cluster Head-Up Display Not Equipped
Radio/HVAC Control
Video Processing Control Module
Radio
Amplifier
Rear Audio Control Module
Media Disc Player
Human Machine Interface Control Module
Telematics Communication Interface Control Module
HVAC Control Module
Liftgate Control Module
Seat Memory Control Module - Passenger
Seat Memory Control Module - Driver
Keyless Entry Control Module
Assist Step Control Module
Left Side Object Detection Control Module
Parking Assist Control Module
Frontview Camera Module
Steering Column Lock Control Module
Long Range Radar Sensor Module
Left Front Short Range Radar Sensor Module
Right Front Short Range Radar Sensor Module
Left Rear Radar Short Range Sensor Module
Right Rear Short Range Radar Sensor Module

XTS 2017 Add

-Powertrain
2.0L LTG Engine Control Module
2.0L LTG Transmission Control Module
3.6L LF3 Engine Control Module
3.6L LF3 Transmission Control Module
3.6L LFX Engine Control Module
3.6L LFX Transmission Control Module
Rear Differential Clutch Control Module

-Chassis

Electronic Brake Control Module
Parking Brake Control Module
Multi-Axis Acceleration Sensor Module
Power Steering Control Module
Steering Wheel Angle Sensor Module
Suspension Control Module

-Body

Body Control Module
Serial Data Gateway Module
Inflatable Restraint Sensing and Diagnostic Module
Passenger Presence Module
Instrument Cluster Enhanced Driver Info Center (UDD)

Instrument Cluster Full Screen Display (UDV)
Radio/HVAC Control
Active Safety Control Module
Video Processing Control Module
Radio
Amplifier
Media Disc Player
Human Machine Interface Control Module
Telematics Communication Interface Control Module
HVAC Auto Control Dual Zone (CJ2)
HVAC Auto Control Tri Zone (CJ4)
Seat Memory Control Module - Passenger
Seat Memory Control Module - Driver
Keyless Entry Control Module
Right Side Object Detection Control Module
Left Side Object Detection Control Module
Parking Assist Control Module
Frontview Camera Module
Steering Column Lock Control Module
Long Range Radar Sensor Module
Left Front Short Range Radar Sensor Module
Right Front Short Range Radar Sensor Module
Rear Short Range Radar Sensor Module

XT5 2017 Add

-Powertrain
Engine Control Module
Transmission Control Module
Chassis Control Module
Transmission Range Control Module
Rear Differential Clutch Control Module Version 0501
Rear Differential Clutch Control Module Version 0502

-Chassis

Electronic Brake Control Module
Power Steering Control Module
Suspension Control Module

-Body

Body Control Module Halogen (T4A TT4)
Body Control Module Light Emitting Diode (T4L)
Serial Data Gateway Module
Inflatable Restraint Sensing and Diagnostic Module
Passenger Presence Module
Seat Belt Retractor Motor Module - Left
Seat Belt Retractor Motor Module - Right
Instrument Cluster
Radio Controls
HVAC Controls
Video Processing Control Module
Headlamp Control Module
Radio
Amplifier
Media Disc Player

Human Machine Interface Control Module
Telematics Communication Interface Control Module
Version 9
Telematics Communication Interface Control Module
Version 10
HVAC Auto Control Dual Zone (CJ2)
HVAC Auto Control Tri Zone (CJ4)
Liftgate Control Module
Seat Memory Control Module - Driver
Keyless Entry Control Module
Left Side Object Detection Control Module
Parking Assist Control Module
Frontview Camera Module
Steering Column Lock Control Module
Long Range Radar Sensor Module
Left Front Short Range Radar Sensor Module
Right Front Short Range Radar Sensor Module
Rear Short Range Radar Sensor Module

- GMC**Acadia N(Product Line) 2017 Add**

-Powertrain
2.5L LCV Engine Control Module Automatic
Transmission
2.5L LCV Engine Control Module Manual Transmission
2.5L LCV Transmission Control Module
3.6L LGX Engine Control Module Automatic
Transmission
3.6L LGX Engine Control Module Manual Transmission
3.6L LGX Transmission Control Module
Chassis Control Module
Rear Differential Clutch Control Module Version 0501
Rear Differential Clutch Control Module Version 0502

-Chassis

Electronic Brake Control Module
Power Steering Control Module
Suspension Control Module

-Body

Body Control Module Halogen (T4A TT4)
Body Control Module High Intensity Discharge (T4F TT2
TT6 TT7 TT8)
Serial Data Gateway Module
Inflatable Restraint Sensing and Diagnostic Module
Passenger Presence Module
Instrument Cluster Enhanced Driver Information Center
(UDD)
Instrument Cluster Enhanced Monochrome Driver
Information Center (UDC)
Instrument Cluster Enhanced Multi-Color Driver
Information Center (UHS)
Radio Controls
HVAC Controls

Video Processing Control Module
Radio
Amplifier
Media Disc Player
Human Machine Interface Control Module
Telematics Communication Interface Control Module
HVAC Control Module
Liftgate Control Module
Seat Memory Control Module - Driver
Keyless Entry Control Module
Left Side Object Detection Control Module
Parking Assist Control Module
Frontview Camera Module
Long Range Radar Sensor Module
Left Front Short Range Radar Sensor Module
Right Front Short Range Radar Sensor Module
Rear Short Range Radar Sensor Module

Acadia R(Product Line) 2017 Add

-Powertrain

3.6L LLT Engine Control Module
3.6L LLT Transmission Control Module
Rear Differential Clutch Control Module

-Chassis

Electronic Brake Control Module

-Body

Body Control Module Mechanical Liftgate
Body Control Module Power Liftgate (TB5)
Inflatable Restraint Sensing and Diagnostic Module
Passenger Presence Module
Instrument Cluster
Head-Up Display Module
Radio
Rear Audio Control Module
Digital Radio Receiver Control Module
Personal Audio Link Control Module
Telematics Communication Interface Control Module
HVAC Auto Control Dual Zone (CJ2)
HVAC Manual Control Single Zone (C67)
Driver Door Switch Panel Control Module
Passenger Door Switch Panel Control Module
Liftgate Control Module
Right Side Object Detection Control Module
Left Side Object Detection Control Module
Remote Control Door Lock Receiver
Parking Assist Control Module
Frontview Camera Module
Theft Deterrent Module

Acadia V(Product Line) 2017 Add

-Powertrain

3.6L LLT Engine Control Module

3.6L LLT Transmission Control Module
Rear Differential Clutch Control Module

-Chassis

Electronic Brake Control Module

-Body

Body Control Module Mechanical Liftgate
Body Control Module Power Liftgate (TB5)
Inflatable Restraint Sensing and Diagnostic Module
Passenger Presence Module
Instrument Cluster
Head-Up Display Module
Radio
Rear Audio Control Module
Digital Radio Receiver Control Module
Personal Audio Link Control Module
Telematics Communication Interface Control Module
HVAC Auto Control Dual Zone (CJ2)
HVAC Manual Control Single Zone (C67)
Driver Door Switch Panel Control Module
Passenger Door Switch Panel Control Module
Liftgate Control Module
Right Side Object Detection Control Module
Left Side Object Detection Control Module
Remote Control Door Lock Receiver
Parking Assist Control Module
Frontview Camera Module
Theft Deterrent Module

Canyon 2017 Add

-Powertrain

2.5L LCV Engine Control Module Automatic Transmission
2.5L LCV Engine Control Module Manual Transmission
2.5L LCV Transmission Control Module
2.8L LWN Engine Control Module
2.8L LWN Transmission Control Module
3.6L LGZ Engine Control Module Automatic Transmission
3.6L LGZ Engine Control Module Manual Transmission
3.6L LGZ Transmission Control Module
Transfer Case Control Module

-Chassis

Electronic Brake Control Module
Power Steering Control Module

-Body

Body Control Module
Serial Data Gateway Module
Inflatable Restraint Sensing and Diagnostic Module
Passenger Presence Module
Instrument Cluster Enhanced Driver Information Center

(UDD)
Instrument Cluster Enhanced Monochrome Driver
Information Center (UDC)
Radio Controls
HVAC Controls
Radio (IO3)
Radio (IOB)
Uplevel (IO4 IO5 IO6)
Amplifier
Human Machine Interface Control Module
Telematics Communication Interface Control Module
HVAC Control Module Auto Single (C68)
HVAC Control Module Manual Single (C67)
Frontview Camera Module

Savana 2017 Add

-Powertrain

2.8L LWN Engine Control Module
2.8L LWN Transmission Control Module
4.8L L20 Engine Control Module
4.8L L20 Transmission Control Module
6.0L L96 Engine Control Module
6.0L L96 Transmission Control Module
6.0L LC8 Engine Control Module
6.0L LC8 Transmission Control Module
6.6L LGH Engine Control Module
6.6L LGH Glow Plug Control Module
6.6L LGH Transmission Control Module

-Chassis

Electronic Brake Control Module

-Body

Body Control Module
Inflatable Restraint Sensing and Diagnostic Module
Instrument Cluster
Chime Alarm Control Module
Base Radio
Navigation Radio
Uplevel Radio
Digital Radio Receiver Control Module
Telematics Communication Interface Control Module
Auxiliary Heater Control Module
Remote Control Door Lock Receiver
Parking Assist Control Module
Theft Deterrent Module

Sierra 2017 Add

-Powertrain

4.3L LV1 Engine Control Module
4.3L LV3 Engine Control Module
4.3L LV3 Transmission Control Module
5.3L L83 Engine Control Module
5.3L L83 Transmission Control Module 6 Speed (MYC)

5.3L L83 Transmission Control Module 8 Speed (M5U)
5.3L L8B Engine Control Module
5.3L L8B Transmission Control Module 8 Speed (M5X)
6.0L L96 Engine Control Module
6.0L L96 Transmission Control Module
6.0L LC8 Engine Control Module
6.0L LC8 Transmission Control Module
6.2L L86 Engine Control Module
6.2L L86 Transmission Control Module 6 Speed (MYC)
6.2L L86 Transmission Control Module 8 Speed (M5U)
6.6L L5P Engine Control Module
6.6L L5P Glow Plug Control Module
6.6L L5P Transmission Control Module
6.6L L5P Power Take-Off Control Module
Transfer Case Version Two Wheel Drive
Transfer Case Version Two Speed Electric Shift (NQF)
Transfer Case Version Two Speed Manual Shift (NQG)
Transfer Case Version Two Speed Switch Activated (NQH)
Transfer Case Version Single Speed Switch Activated (NP0)

-Chassis

Electronic Brake Control Module
Power Steering Control Module
Steering Wheel Angle Sensor Module
Suspension Control Module

-Body

Body Control Module
Serial Data Gateway Module
Inflatable Restraint Sensing and Diagnostic Module
Version (EPG)
Inflatable Restraint Sensing and Diagnostic Module
Version Not Equipped
Passenger Presence Module
Instrument Cluster Head-Up Display (UV6)
Instrument Cluster Head-Up Display Not Equipped
Radio Controls
HVAC Controls
Trailer Interface Control Module
Radio
Amplifier
Media Disc Player
Human Machine Interface Control Module
Telematics Communication Interface Control Module
Version 9.7
Telematics Communication Interface Control Module
Version 10
HVAC Auto Control Dual Zone (CJ2)
HVAC Manual Control Single Zone (C67)
Seat Memory Control Module - Driver
Assist Step Control Module
Parking Assist Control Module

Frontview Camera Module

Terrain 2017 Add

-Powertrain

2.4L LEA Engine Control Module
2.4L LEA Transmission Control Module
3.6L LFX Engine Control Module
3.6L LFX Transmission Control Module
Rear Differential Clutch Control Module

-Chassis

Electronic Brake Control Module
Multi-Axis Acceleration Sensor Module
Power Steering Control Module
Steering Wheel Angle Sensor Module

-Body

Body Control Module Mechanical Liftgate
Body Control Module Power Liftgate (TB5)
Inflatable Restraint Sensing and Diagnostic Module
Passenger Presence Module
Instrument Cluster
Radio
Telematics Communication Interface Control Module
Version 9.7
Telematics Communication Interface Control Module
Version 10
HVAC Control Module Auto Single (C68)
HVAC Control Module Manual Single (C67)
Liftgate Control Module
Seat Memory Control Module
Right Side Object Detection Control Module
Left Side Object Detection Control Module
Parking Assist Control Module
Frontview Camera Module

Yukon 2017 Add

-Powertrain

5.3L L83 Engine Control Module
5.3L L83 Transmission Control Module
6.2L L86 Engine Control Module
6.2L L86 Transmission Control Module 6 Speed
6.2L L86 Transmission Control Module 8 Speed
Transfer Case Version Two Wheel Drive
Transfer Case Version Two Speed Switch Activated
(NQH)
Transfer Case Version Single Speed Switch Activated
(NP0)

-Chassis

Electronic Brake Control Module
Distance Sensing Cruise Control Module
Parking Brake Control Module
Power Steering Control Module

Steering Wheel Angle Sensor Module
Suspension Control Module

-Body

Body Control Module
Serial Data Gateway Module
Inflatable Restraint Sensing and Diagnostic Module
Passenger Presence Module
Instrument Cluster
Radio Controls
HVAC Controls
Video Processing Control Module
Radio
Amplifier
Rear Audio Control Module
Media Disc Player
Human Machine Interface Control Module
Telematics Communication Interface Control Module
HVAC Control Module
Liftgate Control Module
Seat Memory Control Module - Passenger
Seat Memory Control Module - Driver
Keyless Entry Control Module
Assist Step Control Module
Left Side Object Detection Control Module
Parking Assist Control Module
Frontview Camera Module
Steering Column Lock Control Module

Yukon XL 2017 Add

-Powertrain

5.3L L83 Engine Control Module
5.3L L83 Transmission Control Module
6.2L L86 Engine Control Module
6.2L L86 Transmission Control Module 6 Speed
6.2L L86 Transmission Control Module 8 Speed
Transfer Case Version Two Wheel Drive
Transfer Case Version Two Speed Switch Activated
(NQH)
Transfer Case Version Single Speed Switch Activated
(NP0)

-Chassis

Electronic Brake Control Module
Distance Sensing Cruise Control Module
Parking Brake Control Module
Power Steering Control Module
Steering Wheel Angle Sensor Module
Suspension Control Module

-Body

Body Control Module
Serial Data Gateway Module
Inflatable Restraint Sensing and Diagnostic Module

Passenger Presence Module
Instrument Cluster
Radio Controls
HVAC Controls
Video Processing Control Module
Radio
Amplifier
Rear Audio Control Module
Media Disc Player
Human Machine Interface Control Module
Telematics Communication Interface Control Module
HVAC Control Module
Liftgate Control Module
Seat Memory Control Module - Passenger
Seat Memory Control Module - Driver
Keyless Entry Control Module
Assist Step Control Module
Left Side Object Detection Control Module
Parking Assist Control Module
Frontview Camera Module
Steering Column Lock Control Module

[Back to Index](#)

CHRYSLER/JEEP/DODGE

Wrangler (2010)

PCM (Power Control Module)
- Basic Function
 Data Analysis [enhanced]
 Actuation Test [enhanced]
- Advanced Function
 Learn ETC

Dodge Ram 3500 (2010)

PCM (Power Control Module)
- Basic Function
 Data Analysis [enhanced]
 Actuation Test [enhanced]
- Advanced Function
 Learn ETC

Dodge Ram 2500 (2010)

PCM (Power Control Module)
- Basic Function
 Data Analysis [enhanced]
 Actuation Test [enhanced]
- Advanced Function
 Learn ETC

Journey (2010)

PCM (Power Control Module)
- Basic Function
 Data Analysis [enhanced]
 Actuation Test [enhanced]
- Advanced Function
 Learn ETC

Wrangler (2010)

PCM (Power Control Module)
- Basic Function
 Data Analysis [enhanced]
 Actuation Test [enhanced]
- Advanced Function
 Learn ETC

Dodge Ram 1500 (2011~2015)

PCM (Power Control Module)
- Basic Function
 Data Analysis [enhanced]
 Actuation Test [enhanced]
- Advanced Function
 Compression Test
 Program Variant Coding
 Rail Pressure Control Switchover
 Lambda Sensor 1 Initialization
 IMA Quick Calibration
 Request Anti-Slugging For Air Condition Compressor
 Oxidation Catalyst Initialization
 Diesel Particulate Filter Replacement
 Service Diesel Particulate Filter Regeneration
 Fuel Mean Value Adaption Initialization
 VIN Writing

Wrangler (2011~2015)

PCM (Power Control Module)
- Basic Function
 Data Analysis [enhanced]
 Actuation Test [enhanced]
- Advanced Function
 Compression Test
 Program Variant Coding
 Rail Pressure Control Switchover
 Lambda Sensor 1 Initialization
 IMA Quick Calibration
 Request Anti-Slugging For Air Condition Compressor
 Oxidation Catalyst Initialization
 Diesel Particulate Filter Replacement
 Service Diesel Particulate Filter Regeneration
 Fuel Mean Value Adaption Initialization
 VIN Writing

Liberty (2011~2015)

PCM (Power Control Module)

- Basic Function
 - Data Analysis [enhanced]
 - Actuation Test [enhanced]
- Advanced Function
 - Compression Test
 - Program Variant Coding
 - Rail Pressure Control Switchover
 - Lambda Sensor 1 Initialization
 - IMA Quick Calibration
 - Request Anti-Slugging For Air Condition Compressor
 - Oxidation Catalyst Initialization
 - Diesel Particulate Filter Replacement
 - Service Diesel Particulate Filter Regeneration
 - Fuel Mean Value Adaption Initialization
 - VIN Writing

Compass (2011~2015)

PCM (Power Control Module)

- Basic Function
 - Data Analysis [enhanced]
 - Actuation Test [enhanced]
- Advanced Function
 - Compression Test
 - Program Variant Coding
 - Rail Pressure Control Switchover
 - Lambda Sensor 1 Initialization
 - IMA Quick Calibration
 - Request Anti-Slugging For Air Condition Compressor
 - Oxidation Catalyst Initialization
 - Diesel Particulate Filter Replacement
 - Service Diesel Particulate Filter Regeneration
 - Fuel Mean Value Adaption Initialization
 - VIN Writing

Grand Cherokee (2006)

ORC (Occupant Restraint Control)

- Basic Function
 - Data Analysis [enhanced]
- Advanced Function
 - Rollover Detection

Grand Cherokee (2009)

PTS (Park Assist Module)

- Basic Function
 - Data Analysis [enhanced]
 - Actuation Test [enhanced]
- Advanced Function
 - Configure License Plate Size

ESM (Electronic Shifter Module)

- Basic Function
 - Data Analysis [enhanced]
 - Actuation Test [enhanced]
- Advanced Function
 - Configure License Plate Size

Grand Cherokee (2013)

EPS (Electric Power Steering)

- Basic Function
 - Data Analysis [enhanced]
 - Actuation Test [enhanced]

DTCM (Drive Train Control Module)

- Basic Function
 - Data Analysis [enhanced]
 - Actuation Test [enhanced]
- Advanced Function
 - Non-Volatile Memory Reset (Clear T-Case Adaptives)

PTS (Park Assist Module)

- Basic Function
 - Data Analysis [enhanced]
 - Actuation Test [enhanced]
- Advanced Function
 - Configure License Plate Size

Grand Cherokee (2014)

ORC (Occupant Restraint Control)

- Basic Function
 - Data Analysis [enhanced]

PTS (Park Assist Module)

- Basic Function
 - Data Analysis [enhanced]
 - Actuation Test [enhanced]
- Advanced Function
 - Configure License Plate Size

ESM (Electronic Shifter Module)

- Basic Function
 - Data Analysis [enhanced]

IPC (Instrument Panel Cluster)

- Basic Function
 - Data Analysis [enhanced]
 - Actuation Test [enhanced]
- Advanced Function
 - Enable/Disable Seatbelt Minder Function

DTCM (Drive Train Control Module)

- Basic Function
 - Data Analysis [enhanced]
 - Actuation Test [enhanced]

- Advanced Function
Non-Volatile Memory Reset (Clear T-Case
Adaptives)

EPS (Electric Power Steering)

- Basic Function
- Data Analysis [enhanced]

TCM (Transmission Control Module)

- Basic Function
- Data Analysis [enhanced]
- Actuation Test [enhanced]
- Advanced Function
- Reset Adaptive Values

BCM (Body Control Module)

- Basic Function
- Data Analysis [enhanced]
- Actuation Test [enhanced]
- Advanced Function
- Program Tire Size
- Update Pressure Thresholds
- Exit Shipping Mode
- Change Country Code

Grand Cherokee (2015)

BCM (Body Control Module)

- Basic Function
- Data Analysis [enhanced]
- Actuation Test [enhanced]
- Advanced Function
- Program Tire Size
- Update Pressure Thresholds
- Exit Shipping Mode
- Change Country Code

Grand Cherokee (2016)

ORC (Occupant Restraint Control)

- Basic Function
- Data Analysis [enhanced]

PTS (Park Assist Module)

- Basic Function
- Data Analysis [enhanced]
- Actuation Test [enhanced]
- Advanced Function
- Configure License Plate Size

ESM (Electronic Shifter Module)

- Basic Function
- Data Analysis [enhanced]

IPC (Instrument Panel Cluster)

- Basic Function

Data Analysis [enhanced]

Actuation Test [enhanced]

- Advanced Function
- Enable/Disable Seatbelt Minder Function

DTCM (Drive Train Control Module)

- Basic Function
- Data Analysis [enhanced]
- Actuation Test [enhanced]

- Advanced Function

Non-Volatile Memory Reset (Clear T-Case
Adaptives)

EPS (Electric Power Steering)

- Basic Function
- Data Analysis [enhanced]

TCM (Transmission Control Module)

- Basic Function
- Data Analysis [enhanced]
- Actuation Test [enhanced]

- Advanced Function

Reset Adaptive Values

BCM (Body Control Module)

- Basic Function
- Data Analysis [enhanced]
- Actuation Test [enhanced]
- Advanced Function
- Program Tire Size
- Update Pressure Thresholds
- Exit Shipping Mode
- Change Country Code

Challenger (2016)

TCM (Transmission Control Module)

- Basic Function
- Data Analysis [enhanced]
- Actuation Test [enhanced]
- Advanced Function
- Reset Adaptive Values

BCM (Body Control Module)

- Basic Function
- Data Analysis [enhanced]
- Actuation Test [enhanced]
- Advanced Function
- Program Tire Size
- Update Pressure Thresholds
- Exit Shipping Mode
- Change Country Code

PTS (Park Assist Module)

- Basic Function
- Data Analysis [enhanced]

Actuation Test [enhanced]
- Advanced Function
Configure License Plate Size

ORC (Occupant Restraint Control)
- Basic Function
Data Analysis [enhanced]

RFH (Radio Frequency Hub)
- Basic Function
Data Analysis [enhanced]

IPC (Instrument Panel Cluster)
- Basic Function
Data Analysis [enhanced]
Actuation Test [enhanced]
- Advanced Function
Enable/Disable Seatbelt Minder Function

ESM (Electronic Shifter Module)
- Basic Function
Data Analysis [enhanced]

New Model added

Durnago (2017) Added
Journey (2017) Added
Grand Caravan (2017) Added
Grand Voyager (2017) Added
Town&Country (2017) Added

Feedback

USA : 2008 Wrangler – Learn ETC Added
USA : 2006 RAM – Learn ETC , Engine Oil Data , Writing PCM Odometer Added
USA : 2008 Town&country – WCM SP Bug Fixed
USA : 2013 RAM 3500 – System Added
USA : 2007 RAM – WCM SP Bug Fixed
USA : 2013 RAM 3500 – Turbo Actuator Pre-Align / Self Calibrate Added
USA : 2008 Wrangler WCM SP Bug Fixed
USA : 2015 Challenger – ABS Initialisation Bug Fixed
AUS : 2006 Grand Cherokee – Injector Coding Bug Fixed
IRQ : 2013 Compass – Learn ETC Added
USA : 2006 RAM : TCM Quick Learn Added
USA : 2013 Compass – Learn ETC Added
GBR : 2008 Wrangler – Key Coding Bug Fixed
USA : 2008 Dodge RAM - Key Coding Bug Fixed
IRQ : 2013 Avenger - Learn ETC Added
USA : 2009 RAM – WCM , TPMS SP Added
USA : 2015 RAM – WCM , TPMS SP Added
USA : 2007 Durango – Oil Pressure Sensor Added

IRQ : 2017 Grand Cherokee – PCM SP Added
USA : 2009 Liberty – FDCM System Added
IRQ : 2013 Avenger - Learn ETC Added
IRQ : 2016 Dart – Unknown DTC Added
USA : 2015 Grand Cherokee – Mis-fire Data Added

[Back to Index](#)**PERODUA****MYVI (M806) added**

EFI
A/T
eco IDLE
ABS/VSC
EPS
Steering sensor
Body
Combi SW
Stereo camera
A/B

[Back to Index](#)**OPEL / GM BRAZIL****New Model & System added**

Vivaro Engine New Type added
- Basic Function
DTC Analysis
Data Analysis
Actuation Test
ECU Information Display
- Special Function
Vin Registration
Enter Injector Codes
Cabin Filter Regeneration
Fuel SPLY PREV
Engine Adaptives
EGR Valve Programming
Average Air Temperature
DPF Relative Pressure Sensor
Exhaust Fuel Injector Circuit
Air Damper Valve Programming
CC/SL Programming
FLYWHL TGT PG
Rail Pressure Sensor Adaptives
Preheater Unit
PRPR Rich Sensor Programming

Exhaust Air Flap Programming
Idle Speed REFFR
Adaptives After Replacing Cabin Filter
Adaptives After Regenerating PF

Vivaro ABS New Type added

- Basic Function
 - DTC Analysis
 - Data Analysis
 - Actuation Test
 - ECU Information Display
- Special Function
 - Speedo Index
 - Vin Registration
 - Write Date of Last After Sales OPE
 - VEH. Speed AT Initialistion
 - Check Target Teeth
 - Bleed HYD Unit Brake Circle

Corsa-D A 12 XER New Type added

- Basic Function
 - DTC Analysis
 - Data Analysis
 - Actuation Test
 - ECU Information Display

Corsa-D IPC (Instrument) New Type added

- Basic Function
 - DTC Analysis
 - Data Analysis
 - Actuation Test
 - ECU Information Display

Feedback

Vivaro New Type Added : Request from UK, Cyprus.
Corsa-d New Type Added : Request from UK.

[Back to Index](#)

HOLDEN

New functions added

VE V6 SIDI

- Support function
 - Program immobilizer function – SIDI
 - ECM Reset - SIDI

Bug Fixed

Captiva 5/7 : Diesel engine Description edited
VT/VX Commodore : ABS communication stabilized
VT/VX Commodore : BCM(Body control module)

communication stabilized
VT/VX Commodore : Instrument communication stabilized.
VX Commodore : V6 Engine communication stabilized
VX Commodore : Auto transmission Communication stabilized
Captiva : Diesel engine Description edited.
Viava : SSPS Description edited.

[Back to Index](#)

CHERY

TIGGO 5 (T21) ENGINE

- Special Function
 - VIN write

TPMS

- Special Function
 - Tire pressure self-learning
 - Test mode

ICM

- Special Function
 - Service reset

IMMO

- Special Function
 - Program keys
 - Erase keys
 - VIN write

ARRIZO 5 (M1A)

TPMS

- Special Function
 - Tire pressure self-learning
 - Test mode

ICM

- Special Function
 - Service reset

IMMO

- Special Function
 - Program keys
 - Erase keys
 - VIN write

[Back to Index](#)

DAEHAN**New Model added****TERA350**

Engine – EDC17C55(P978V32)

- Basic Function added
 - DTC Analysis
 - Data Analysis
 - Actuation Test
 - System Identification

[Back to Index](#)**PROTON****New Model & System added****Persona NFE Special Function Add Engine**

- Special Function
 - Model name read and write

SRS

- Special Function
 - Date of ACU Installation (After Sales)

Immo

- Special Function
 - Immo and alarm coding
 - PASE-Antenna self check
 - PASE-Variant coding

Iriz Special Function Add Engine

- Special Function
 - Model name read and write

SRS

- Special Function
 - Date of ACU Installation (After Sales)

Immo

- Special Function
 - Immo and alarm coding
 - PASE-Antenna self check
 - PASE-Variant coding

Saga FLX**ABS**

- DTC
- Sensor
- Actuator
- ECU Info
- Special Function
 - Variant Coding
- HCU Repair Bleed ESC

Exora**ABS**

- DTC
- Sensor
- Actuator
- ECU Info
- Special Function
 - Steering Angle Sensor Calibration ESC
- HCU Repair Bleed ABS

[Back to Index](#)**MVM****TIGGO 5 (T21)****ENGINE**

- Special Function
 - VIN write

TPMS

- Special Function
 - Tire pressure self-learning
 - Test mode

ICM

- Special Function
 - Service reset

IMMO

- Special Function
 - Program keys
 - Erase keys
 - VIN write

ARRIZO 5 (M1A)**TPMS**

- Special Function
 - Tire pressure self-learning
 - Test mode

ICM

- Special Function
Service reset

AT
ABS
IMMO

IMMO

- Special Function
Program keys
Erase keys
VIN write

[Back to Index](#)[Back to Index](#)**LIFAN****TATA****520 added**

ENGINE
ABS
SRS
IMMO

Bug fixed

BODY > SRS > SAFARI SRS1

- Basic Function
Communication Open

CHASSIS > ABS > VISTA/MANZA

- Basic Function
ECU Information

[Back to Index](#)**530 added**

ENGINE
AT
ABS
EPS
SRS
IMMO

LDV**620 added**

ENGINE
ABS
SRS
IMMO

LDV added (Request from AU)

Service reset
AT
ABS
SRS

[Back to Index](#)**820 added**

ENGINE
ABS
Instrument
SRS
FBCM
RBCM
IMMOBILIZER

MG**X50 added**

ENGINE
AT
ABS
EPS
SRS
IMMO

MG3 Zero added

ENGINE
AT
ABS
BCM
SRS
Instrument panel
Rain sensor

MG 350 added

ENGINE
AT
ABS

X60 added

ENGINE

BCM
SRS
Instrument panel

MG5 added

ENGINE
AT
ABS
BCM
SRS
Instrument panel

MG 550 added

ENGINE
AT
ABS
SRS
BCM
ESCL
AC
Instrument panel
DVD
Central Locking
Electric Windows
Interior and Exterior Lights
Security and Immobilisation
Wipers and Washers
PDC
Rain sensor

MG6 added

ENGINE
AT
TBOX
ABS
SAS
EPB
SRS
BCM
AFS
AC
Instrument panel
DVD
SCU
PDC

MG GS added

ENGINE
AT
TCCM
Gateway
ABS
EPS
SAS
EPB

SRS
PDC
PMC
AFS
PEPS
AC
Instrument panel
DVD
SCU

[Back to Index](#)**ASIAN TRUCK/BUS****New Model & System added**

SINO A-7 380 16PIN Connector
- Denso Common Rail Engine
- Wabco ABS

[Back to Index](#)**EUROPE TRUCKS BETA****New Model & System added**

DAF XF(105.460) 16PIN Connector
- Engine System (DMCI)
- Vehicle Control System (VIC213)
- Brake System (EBS2)
- Suspension System (ECAS4)
- Tachograph (DTCO)
- After Treatment System (EAS)
- Vehicle Control System (BBM)
- Vehicle Control System (SWS)
- Communication System (TELEPHONE)

[Back to Index](#)**MERCEDES COMMERCIAL****New model added**

- Truck > Actros > Actros 2/3(93X)
- Truck > Actros > Actros(963)
- Truck > Atego > Atego 2(375/958/97X)
- Truck > Atego > Atego(967)
- Truck > Econic > Econic(957)
- Truck > Econic > Econic(956)
- Truck > Arocs > Arocs(964)
- Truck > Antos > Antos(963)
- Truck > Zetros > Zetros(949)

- Truck > Axor > Axor(375/944)
- Truck > Accelo > Accelo(979)
- Unimog > U20 > U20(405)
- Unimog > UGE > UGE(405)
- Unimog > UHE > UHE(437)
- Unimog > UGN > UGN(405)
- Busses > Travego > Travego(410/629/632)
- Busses > Intouro > Intouro(613/633)
- Busses > Integro > Integro(627/633)
- Busses > Citaro > Citaro(628)
- Busses > Capacity > Capacity(628)
- Busses > Turismo > Turismo(410/632)
- Busses > Conecto > Conecto(628/671)
- Busses > Multego > Multego(634)
- Busses > O500 > LF(634)
- Busses > O500 > RF(634)
- Busses > MINIBUS > MINIBUS(90X)

New system added

Accelo(979), Actros 2/3(93X), Atego 2(375/958/97X), Axor(375/944), Citaro(628), Conecto(628/671), Econic(957), Integro(627/633), Intouro(613/633), Multego(634), Turismo(410/632), Travego(410/629/632), U20(405), UGN(405), Zetros(949)

- ABS/ESP/EBS - Antilock brake system

- Basic function
- DTC Analysis
- ECU Information Display

Accelo(979), Actros 2/3(93X), Atego 2(375/958/97X), Axor(375/944), Citaro(628), Conecto(628/671), Econic(957), Integro(627/633), Intouro(613/633), Multego(634), Turismo(410/632), Travego(410/629/632), U20(405), UGN(405), Zetros(949)

- ABS/ESP/EBS - Antilock brake system

- Basic function
- DTC Analysis
- ECU Information Display

Accelo(979), Actros 2/3(93X), Atego 2(375/958/97X), Axor(375/944), Citaro(628), Conecto(628/671), Econic(957), Integro(627/633), Intouro(613/633), Multego(634), Turismo(410/632), Travego(410/629/632), U20(405), UGN(405), Zetros(949)

- CPC/FR - Drive control

- Basic function
- DTC Analysis
- ECU Information Display

Accelo(979), Actros 2/3(93X), Atego 2(375/958/97X), Axor(375/944), Citaro(628), Conecto(628/671), Econic(957), Integro(627/633), Intouro(613/633), Multego(634), Turismo(410/632), Travego(410/629/632), U20(405), UGN(405), Zetros(949)

- GW/INS - Gateway/Instrument
- Basic function
- DTC Analysis
- ECU Information Display

Accelo(979), Actros 2/3(93X), Atego 2(375/958/97X), Axor(375/944), Citaro(628), Conecto(628/671), Econic(957), Integro(627/633), Intouro(613/633), Multego(634), Turismo(410/632), Travego(410/629/632), U20(405), UGN(405), Zetros(949)

- MCM/MR/NGT/CNG - Engine control/management

- Basic function
- DTC Analysis
- Data Analysis
- ECU Information Display

Accelo(979), Actros 2/3(93X), Atego 2(375/958/97X), Axor(375/944), Citaro(628), Conecto(628/671), Econic(957), Integro(627/633), Intouro(613/633), Multego(634), Turismo(410/632), Travego(410/629/632), U20(405), UGN(405), Zetros(949)

- PSM - Parameterizable special module

- Basic function
- DTC Analysis
- ECU Information Display

Accelo(979), Actros 2/3(93X), Atego 2(375/958/97X), Axor(375/944), Citaro(628), Conecto(628/671), Econic(957), Integro(627/633), Intouro(613/633), Multego(634), Turismo(410/632), Travego(410/629/632), U20(405), UGN(405), Zetros(949)

- TCO - Tachograph

- Basic function
- DTC Analysis
- ECU Information Display

Accelo(979), Actros 2/3(93X), Atego 2(375/958/97X), Axor(375/944), Citaro(628), Conecto(628/671), Econic(957), Integro(627/633), Intouro(613/633), Multego(634), Turismo(410/632), Travego(410/629/632), Zetros(949)

- ABA - Active brake assist

- Basic function
- DTC Analysis
- ECU Information Display

Accelo(979), Actros 2/3(93X), Atego 2(375/958/97X), Axor(375/944), Citaro(628), Conecto(628/671), Econic(957), Integro(627/633), Intouro(613/633), Multego(634), Turismo(410/632), Travego(410/629/632), Zetros(949)

- AGS - Gear control

- Basic function
- DTC Analysis

ECU Information Display

Accelo(979), Actros 2/3(93X), Atego 2(375/958/97X), Axor(375/944), Citaro(628), Conecto(628/671), Econic(957), Integro(627/633), Intouro(613/633), Multego(634), Tourismo(410/632), Travego(410/629/632), Zetros(949)

- FLA - Flame starting system

Basic function

DTC Analysis

ECU Information Display

Accelo(979), Actros 2/3(93X), Atego 2(375/958/97X), Axor(375/944), Citaro(628), Conecto(628/671), Econic(957), Integro(627/633), Intouro(613/633), Multego(634), Tourismo(410/632), Travego(410/629/632), Zetros(949)

- GS - Gear control

Basic function

DTC Analysis

ECU Information Display

Accelo(979), Actros 2/3(93X), Atego 2(375/958/97X), Axor(375/944), Citaro(628), Conecto(628/671), Econic(957), Integro(627/633), Intouro(613/633), Multego(634), Tourismo(410/632), Travego(410/629/632), Zetros(949)

- LWS/SAS - Steering wheel angle sensor

Basic function

DTC Analysis

ECU Information Display

Accelo(979), Actros 2/3(93X), Atego 2(375/958/97X), Axor(375/944), Citaro(628), Conecto(628/671), Econic(957), Integro(627/633), Intouro(613/633), Multego(634), Tourismo(410/632), Travego(410/629/632), Zetros(949)

- MS/WS - Maintenance system

Basic function

DTC Analysis

ECU Information Display

Accelo(979), Actros 2/3(93X), Atego 2(375/958/97X), Axor(375/944), Citaro(628), Conecto(628/671), Econic(957), Integro(627/633), Intouro(613/633), Multego(634), Tourismo(410/632), Travego(410/629/632), Zetros(949)

- PSM - Parameterizable special module

Basic function

DTC Analysis

ECU Information Display

Accelo(979), Actros 2/3(93X), Atego 2(375/958/97X), Axor(375/944), Citaro(628), Conecto(628/671),

Econic(957), Integro(627/633), Intouro(613/633), Multego(634), Tourismo(410/632), Travego(410/629/632), Zetros(949)

- SPA - Lane assistant

Basic function

DTC Analysis

ECU Information Display

Accelo(979), Actros 2/3(93X), Atego 2(375/958/97X), Axor(375/944), Citaro(628), Conecto(628/671), Econic(957), Integro(627/633), Intouro(613/633), Multego(634), Tourismo(410/632), Travego(410/629/632), Zetros(949)

- TCO - Tachograph

Basic function

DTC Analysis

ECU Information Display

Accelo(979), Actros 2/3(93X), Atego 2(375/958/97X), Axor(375/944), Citaro(628), Conecto(628/671), Econic(957), Integro(627/633), Intouro(613/633), Multego(634), Tourismo(410/632), Travego(410/629/632), Zetros(949)

- TP - Telematics platform

Basic function

DTC Analysis

ECU Information Display

Accelo(979), Actros 2/3(93X), Atego 2(375/958/97X), Axor(375/944), Citaro(628), Conecto(628/671), Econic(957), Integro(627/633), Intouro(613/633), Multego(634), Tourismo(410/632), Travego(410/629/632), Zetros(949)

- TP - Telematics platform

Basic function

DTC Analysis

ECU Information Display

Accelo(979), Actros 2/3(93X), Atego 2(375/958/97X), Axor(375/944), Econic(957), U20(405), UGN(405), Zetros(949)

- ABS/ESP/EBS - Antilock brake system

Basic function

DTC Analysis

ECU Information Display

Accelo(979), Actros 2/3(93X), Atego 2(375/958/97X), Axor(375/944), Econic(957), U20(405), UGN(405), Zetros(949)

- GS - Gear control

Basic function

DTC Analysis

ECU Information Display

Accelo(979), Actros 2/3(93X), Atego 2(375/958/97X), Axor(375/944), Econic(957), U20(405), UGN(405), Zetros(949)

- GW/INS - Gateway/Instrument

Basic function
DTC Analysis
ECU Information Display

Accelo(979), Actros 2/3(93X), Atego 2(375/958/97X), Axor(375/944), Econic(957), U20(405), UGN(405), Zetros(949)

- GW/INS - Gateway/Instrument

Basic function
DTC Analysis
ECU Information Display

Accelo(979), Actros 2/3(93X), Atego 2(375/958/97X), Axor(375/944), Econic(957), U20(405), UGN(405), Zetros(949)

- IBH/ITH/ZHE - Auxiliary heating

Basic function
DTC Analysis
ECU Information Display

Accelo(979), Actros 2/3(93X), Atego 2(375/958/97X), Axor(375/944), Econic(957), U20(405), UGN(405), Zetros(949)

- TCO - Tachograph

Basic function
DTC Analysis
ECU Information Display

Accelo(979), Actros 2/3(93X), Atego 2(375/958/97X), Axor(375/944), Econic(957), Zetros(949)

- ALAC/CLCR/CLCS/NR - Level control

Basic function
DTC Analysis
ECU Information Display

Accelo(979), Actros 2/3(93X), Atego 2(375/958/97X), Axor(375/944), Econic(957), Zetros(949)

- ALAC/CLCR/CLCS/NR - Level control

Basic function
DTC Analysis
ECU Information Display

Accelo(979), Actros 2/3(93X), Atego 2(375/958/97X), Axor(375/944), Econic(957), Zetros(949)

- APS/EHPS/EHZ/ZL - Electrohydraulic auxiliary/power steering

Basic function
DTC Analysis
ECU Information Display

Accelo(979), Actros 2/3(93X), Atego 2(375/958/97X), Axor(375/944), Econic(957), Zetros(949)

- APS/EHPS/EHZ/ZL - Electrohydraulic auxiliary/power steering

Basic function
DTC Analysis
ECU Information Display

Accelo(979), Actros 2/3(93X), Atego 2(375/958/97X), Axor(375/944), Econic(957), Zetros(949)

- APS/EHPS/EHZ/ZL - Electrohydraulic auxiliary/power steering

Basic function
DTC Analysis
ECU Information Display

Accelo(979), Actros 2/3(93X), Atego 2(375/958/97X), Axor(375/944), Econic(957), Zetros(949)

- ART - Autonomous intelligent cruise control

Basic function
DTC Analysis
ECU Information Display

Accelo(979), Actros 2/3(93X), Atego 2(375/958/97X), Axor(375/944), Econic(957), Zetros(949)

- ART - Autonomous intelligent cruise control

Basic function
DTC Analysis
ECU Information Display

Accelo(979), Actros 2/3(93X), Atego 2(375/958/97X), Axor(375/944), Econic(957), Zetros(949)

- ATA/EDW - Anti-theft alarm system

Basic function
DTC Analysis
ECU Information Display

Accelo(979), Actros 2/3(93X), Atego 2(375/958/97X), Axor(375/944), Econic(957), Zetros(949)

- ATA/EDW - Anti-theft alarm system

Basic function
DTC Analysis
ECU Information Display

Accelo(979), Actros 2/3(93X), Atego 2(375/958/97X), Axor(375/944), Econic(957), Zetros(949)

- BESO/BTS - Battery isolating/disconnect switch

Basic function
DTC Analysis
ECU Information Display

Accelo(979), Actros 2/3(93X), Atego 2(375/958/97X), Axor(375/944), Econic(957), Zetros(949)

- BNT - Navigation/telephone operating unit

Basic function DTC Analysis ECU Information Display	Axor(375/944), Econic(957), Zetros(949) - CTEL - Cellular telephone - FSA Hands-free system Basic function DTC Analysis ECU Information Display
Accelo(979), Actros 2/3(93X), Atego 2(375/958/97X), Axor(375/944), Econic(957), Zetros(949) - BS - Brake control Basic function DTC Analysis ECU Information Display	Accelo(979), Actros 2/3(93X), Atego 2(375/958/97X), Axor(375/944), Econic(957), Zetros(949) - EAPU - Electronic air-processing unit Basic function DTC Analysis ECU Information Display
Accelo(979), Actros 2/3(93X), Atego 2(375/958/97X), Axor(375/944), Econic(957), Zetros(949) - BS - Brake control Basic function DTC Analysis ECU Information Display	Accelo(979), Actros 2/3(93X), Atego 2(375/958/97X), Axor(375/944), Econic(957), Zetros(949) - FFB - Radio remote control Basic function DTC Analysis ECU Information Display
Accelo(979), Actros 2/3(93X), Atego 2(375/958/97X), Axor(375/944), Econic(957), Zetros(949) - BS - Brake control Basic function DTC Analysis ECU Information Display	Accelo(979), Actros 2/3(93X), Atego 2(375/958/97X), Axor(375/944), Econic(957), Zetros(949) - FM - Front module Basic function DTC Analysis ECU Information Display
Accelo(979), Actros 2/3(93X), Atego 2(375/958/97X), Axor(375/944), Econic(957), Zetros(949) - BS - Brake control Basic function DTC Analysis ECU Information Display	Accelo(979), Actros 2/3(93X), Atego 2(375/958/97X), Axor(375/944), Econic(957), Zetros(949) - GM - Base module Basic function DTC Analysis ECU Information Display
Accelo(979), Actros 2/3(93X), Atego 2(375/958/97X), Axor(375/944), Econic(957), Zetros(949) - BS - Brake control Basic function DTC Analysis ECU Information Display	Accelo(979), Actros 2/3(93X), Atego 2(375/958/97X), Axor(375/944), Econic(957), Zetros(949) - GW/INS - Gateway/Instrument Basic function DTC Analysis ECU Information Display
Accelo(979), Actros 2/3(93X), Atego 2(375/958/97X), Axor(375/944), Econic(957), Zetros(949) - CD - Radio Basic function DTC Analysis ECU Information Display	Accelo(979), Actros 2/3(93X), Atego 2(375/958/97X), Axor(375/944), Econic(957), Zetros(949) - GW/INS - Gateway/Instrument Basic function DTC Analysis ECU Information Display
Accelo(979), Actros 2/3(93X), Atego 2(375/958/97X), Axor(375/944), Econic(957), Zetros(949) - CPC/FR - Drive control Basic function DTC Analysis ECU Information Display	Accelo(979), Actros 2/3(93X), Atego 2(375/958/97X), Axor(375/944), Econic(957), Zetros(949) - GW/INS - Gateway/Instrument Basic function DTC Analysis ECU Information Display
Accelo(979), Actros 2/3(93X), Atego 2(375/958/97X),	Accelo(979), Actros 2/3(93X), Atego 2(375/958/97X), Axor(375/944), Econic(957), Zetros(949) - GW/INS - Gateway/Instrument Basic function DTC Analysis ECU Information Display

Accelo(979), Actros 2/3(93X), Atego 2(375/958/97X), Axor(375/944), Eonic(957), Zetros(949)

- GW/INS - Gateway/Instrument

Basic function
DTC Analysis
ECU Information Display

Accelo(979), Actros 2/3(93X), Atego 2(375/958/97X), Axor(375/944), Eonic(957), Zetros(949)

- GW/INS - Gateway/Instrument

Basic function
DTC Analysis
ECU Information Display

Accelo(979), Actros 2/3(93X), Atego 2(375/958/97X), Axor(375/944), Eonic(957), Zetros(949)

- GW/INS - Gateway/Instrument

Basic function
DTC Analysis
ECU Information Display

Accelo(979), Actros 2/3(93X), Atego 2(375/958/97X), Axor(375/944), Eonic(957), Zetros(949)

- GW/INS - Gateway/Instrument

Basic function
DTC Analysis
ECU Information Display

Accelo(979), Actros 2/3(93X), Atego 2(375/958/97X), Axor(375/944), Eonic(957), Zetros(949)

- GW/INS - Gateway/Instrument

Basic function
DTC Analysis
ECU Information Display

Accelo(979), Actros 2/3(93X), Atego 2(375/958/97X), Axor(375/944), Eonic(957), Zetros(949)

- GW/INS - Gateway/Instrument

Basic function
DTC Analysis
ECU Information Display

Accelo(979), Actros 2/3(93X), Atego 2(375/958/97X), Axor(375/944), Eonic(957), Zetros(949)

- HM - Rear module

Basic function
DTC Analysis
ECU Information Display

Accelo(979), Actros 2/3(93X), Atego 2(375/958/97X), Axor(375/944), Eonic(957), Zetros(949)

- HPS - Hydraulic pneumatic shift

Basic function

DTC Analysis
ECU Information Display

Accelo(979), Actros 2/3(93X), Atego 2(375/958/97X), Axor(375/944), Eonic(957), Zetros(949)

- HZR - Heating control

Basic function
DTC Analysis
ECU Information Display

Accelo(979), Actros 2/3(93X), Atego 2(375/958/97X), Axor(375/944), Eonic(957), Zetros(949)

- HZR - Heating control

Basic function
DTC Analysis
ECU Information Display

Accelo(979), Actros 2/3(93X), Atego 2(375/958/97X), Axor(375/944), Eonic(957), Zetros(949)

- IBH/ITH/ZHE - Auxiliary heating

Basic function
DTC Analysis
ECU Information Display

Accelo(979), Actros 2/3(93X), Atego 2(375/958/97X), Axor(375/944), Eonic(957), Zetros(949)

- ICUC/INS - Instrument

Basic function
DTC Analysis
ECU Information Display

Accelo(979), Actros 2/3(93X), Atego 2(375/958/97X), Axor(375/944), Eonic(957), Zetros(949)

- KSA/ZV - Convenience/Central locking system

Basic function
DTC Analysis
ECU Information Display

Accelo(979), Actros 2/3(93X), Atego 2(375/958/97X), Axor(375/944), Eonic(957), Zetros(949)

- KSA/ZV - Convenience/Central locking system

Basic function
DTC Analysis
ECU Information Display

Accelo(979), Actros 2/3(93X), Atego 2(375/958/97X), Axor(375/944), Eonic(957), Zetros(949)

- MCM/MR/NGT/CNG - Engine control/management

Basic function
DTC Analysis
ECU Information Display

Accelo(979), Actros 2/3(93X), Atego 2(375/958/97X), Axor(375/944), Eonic(957), Zetros(949)

- MS/WS - Maintenance system

- Basic function
- DTC Analysis
- ECU Information Display
- Support function
- General servicing

Accelo(979), Actros 2/3(93X), Atego 2(375/958/97X), Axor(375/944), Econic(957), Zetros(949)

- MSF - Modular switch panel

- Basic function
- DTC Analysis
- ECU Information Display

Accelo(979), Actros 2/3(93X), Atego 2(375/958/97X), Axor(375/944), Econic(957), Zetros(949)

- PSM - Parameterizable special module

- Basic function
- DTC Analysis
- ECU Information Display

Accelo(979), Actros 2/3(93X), Atego 2(375/958/97X), Axor(375/944), Econic(957), Zetros(949)

- RDK/TPC/TPM - Tire pressure control system

- Basic function
- DTC Analysis
- ECU Information Display

Accelo(979), Actros 2/3(93X), Atego 2(375/958/97X), Axor(375/944), Econic(957), Zetros(949)

- RS - Retarder control

- Basic function
- DTC Analysis
- ECU Information Display

Accelo(979), Actros 2/3(93X), Atego 2(375/958/97X), Axor(375/944), Econic(957), Zetros(949)

- SPA - Lane assistant

- Basic function
- DTC Analysis
- ECU Information Display

Accelo(979), Actros 2/3(93X), Atego 2(375/958/97X), Axor(375/944), Econic(957), Zetros(949)

- SPA - Lane assistant

- Basic function
- DTC Analysis
- ECU Information Display

Accelo(979), Actros 2/3(93X), Atego 2(375/958/97X), Axor(375/944), Econic(957), Zetros(949)

- SPA - Lane assistant

- Basic function
- DTC Analysis

ECU Information Display

Accelo(979), Actros 2/3(93X), Atego 2(375/958/97X), Axor(375/944), Econic(957), Zetros(949)

- SRS - Supplemental restraint system

- Basic function
- DTC Analysis
- ECU Information Display

Accelo(979), Actros 2/3(93X), Atego 2(375/958/97X), Axor(375/944), Econic(957), Zetros(949)

- SRS - Supplemental restraint system

- Basic function
- DTC Analysis
- ECU Information Display

Accelo(979), Actros 2/3(93X), Atego 2(375/958/97X), Axor(375/944), Econic(957), Zetros(949)

- SRS - Supplemental restraint system

- Basic function
- DTC Analysis
- ECU Information Display

Accelo(979), Actros 2/3(93X), Atego 2(375/958/97X), Axor(375/944), Econic(957), Zetros(949)

- TMB - Passenger door module

- Basic function
- DTC Analysis
- ECU Information Display

Accelo(979), Actros 2/3(93X), Atego 2(375/958/97X), Axor(375/944), Econic(957), Zetros(949)

- TMF - Driver's door module

- Basic function
- DTC Analysis
- ECU Information Display

Accelo(979), Actros 2/3(93X), Atego 2(375/958/97X), Axor(375/944), Econic(957), Zetros(949)

- WSK - Torque converter clutch of TK turbo clutch

- Basic function
- DTC Analysis
- ECU Information Display

Accelo(979), Actros 2/3(93X), Atego 2(375/958/97X), Axor(375/944), Econic(957), Zetros(949)

- WSK - Torque converter clutch of TK turbo clutch

- Basic function
- DTC Analysis
- ECU Information Display

Accelo(979), Actros 2/3(93X), Atego 2(375/958/97X), Axor(375/944), Econic(957), Zetros(949)

- ZDS - Central data memory

Basic function DTC Analysis ECU Information Display	ECU Information Display
Actros(963), Antos(963), Arocs(964), Atego(967) - ALAC/CLCR/CLCS/NR - Level control	Actros(963), Antos(963), Arocs(964), Atego(967) - EPAC/IAC - Electric parking/Stationary air conditioner
Basic function DTC Analysis ECU Information Display	Basic function DTC Analysis ECU Information Display
Actros(963), Antos(963), Arocs(964), Atego(967) - APS/EHPS/EHZ/ZL - Electrohydraulic auxiliary/power steering	Actros(963), Antos(963), Arocs(964), Atego(967) - EPAC/IAC - Electric parking/Stationary air conditioner
Basic function DTC Analysis ECU Information Display	Basic function DTC Analysis ECU Information Display
Actros(963), Antos(963), Arocs(964), Atego(967) - ASAM/SCA/SSAM/SCH - Signal acquisition and actuation module	Actros(963), Antos(963), Arocs(964), Atego(967) - HAD - Hydraulic auxiliary drive
Basic function DTC Analysis ECU Information Display	Basic function DTC Analysis ECU Information Display
Actros(963), Antos(963), Arocs(964), Atego(967) - ASAM/SCA/SSAM/SCH - Signal acquisition and actuation module	Actros(963), Antos(963), Arocs(964), Atego(967) - HVAC - Heating and ventilation and air conditioning
Basic function DTC Analysis ECU Information Display	Basic function DTC Analysis ECU Information Display
Actros(963), Antos(963), Arocs(964), Atego(967) - ASAM/SCA/SSAM/SCH - Signal acquisition and actuation module	Actros(963), Antos(963), Arocs(964), Atego(967) - IBH/ITH/ZHE - Auxiliary heating
Basic function DTC Analysis ECU Information Display	Basic function DTC Analysis ECU Information Display
Actros(963), Antos(963), Arocs(964), Atego(967) - MCM/MR/NGT/CNG - Engine control/management	Actros(963), Antos(963), Arocs(964), Atego(967) - MCM/MR/NGT/CNG - Engine control/management
Basic function DTC Analysis ECU Information Display	Basic function DTC Analysis ECU Information Display
Actros(963), Antos(963), Arocs(964), Atego(967) - CCM/RCM - Turbo/retarder clutch	Actros(963), Antos(963), Arocs(964), Atego(967) - RDK/TPC/TPM - Tire pressure control system
Basic function DTC Analysis ECU Information Display	Basic function DTC Analysis ECU Information Display
Actros(963), Antos(963), Arocs(964), Atego(967) - DCMD - Door module 'Drive'	Actros(963), Antos(963), Arocs(964), Atego(967) - RPS - Redundant power supply
Basic function DTC Analysis ECU Information Display	Basic function DTC Analysis ECU Information Display
Actros(963), Antos(963), Arocs(964), Atego(967) - DCMP - Door module 'Front passenger'	Actros(963), Antos(963), Arocs(964), Atego(967) - SRS - Supplemental restraint system
Basic function DTC Analysis	

Basic function
DTC Analysis
ECU Information Display

Actros(963), Antos(963), Arocs(964), Atego(967), Capacity(628), Citaro(628), Conecto(628/671), Econic(956), Integro(627/633), Intouro(613/633), LF(634), MINIBUS(90X), Multego(634), RF(634), Turismo(410/632), Travego(410/629/632)

- RDF - Front radar sensor

Basic function
DTC Analysis
ECU Information Display

Actros(963), Antos(963), Arocs(964), Atego(967), Capacity(628), Citaro(628), Conecto(628/671), Econic(956), Integro(627/633), Intouro(613/633), LF(634), MINIBUS(90X), Multego(634), RF(634), Turismo(410/632), Travego(410/629/632)

- VRDU - Driver assistance system

Basic function
DTC Analysis
ECU Information Display

Actros(963), Antos(963), Arocs(964), Atego(967), Capacity(628), Citaro(628), Conecto(628/671), Econic(956), Integro(627/633), Intouro(613/633), LF(634), MINIBUS(90X), Multego(634), RF(634), Turismo(410/632), Travego(410/629/632), UGE(405), UHE(437)

- ACM - Exhaust aftertreatment

Basic function
DTC Analysis
ECU Information Display

Actros(963), Antos(963), Arocs(964), Atego(967), Capacity(628), Citaro(628), Conecto(628/671), Econic(956), Integro(627/633), Intouro(613/633), LF(634), MINIBUS(90X), Multego(634), RF(634), Turismo(410/632), Travego(410/629/632), UGE(405), UHE(437)

- ACM - Exhaust aftertreatment

Basic function
DTC Analysis
ECU Information Display

Actros(963), Antos(963), Arocs(964), Atego(967), Capacity(628), Citaro(628), Conecto(628/671), Econic(956), Integro(627/633), Intouro(613/633), LF(634), MINIBUS(90X), Multego(634), RF(634), Turismo(410/632), Travego(410/629/632), UGE(405), UHE(437)

- CPC/FR - Drive control

Basic function

DTC Analysis
ECU Information Display

Actros(963), Antos(963), Arocs(964), Atego(967), Capacity(628), Citaro(628), Conecto(628/671), Econic(956), Integro(627/633), Intouro(613/633), LF(634), MINIBUS(90X), Multego(634), RF(634), Turismo(410/632), Travego(410/629/632), UGE(405), UHE(437)

- MCM/MR/NGT/CNG - Engine control/management

Basic function
DTC Analysis
ECU Information Display

Actros(963), Antos(963), Arocs(964), Atego(967), Capacity(628), Citaro(628), Conecto(628/671), Econic(956), Integro(627/633), Intouro(613/633), LF(634), MINIBUS(90X), Multego(634), RF(634), Turismo(410/632), Travego(410/629/632), UGE(405), UHE(437)

- MCM/MR/NGT/CNG - Engine control/management

Basic function
DTC Analysis
ECU Information Display

Actros(963), Antos(963), Arocs(964), Atego(967), Capacity(628), Citaro(628), Conecto(628/671), Econic(956), Integro(627/633), Intouro(613/633), MINIBUS(90X), Multego(634), RF(634), Turismo(410/632), Travego(410/629/632)

- MPC - Multifunction camera

Basic function
DTC Analysis
ECU Information Display

Actros(963), Antos(963), Arocs(964), Atego(967), Capacity(628), Citaro(628), Conecto(628/671), Econic(956), Integro(627/633), Intouro(613/633), MINIBUS(90X), Multego(634), RF(634), Turismo(410/632), Travego(410/629/632)

- TCM - Transmission control

Basic function
DTC Analysis
ECU Information Display

Actros(963), Antos(963), Arocs(964), Atego(967), Capacity(628), Citaro(628), Conecto(628/671), Integro(627/633), Intouro(613/633), MINIBUS(90X), Multego(634), RF(634), Turismo(410/632), Travego(410/629/632)

- CCM/RCM - Turbo/retarder clutch

Basic function
DTC Analysis
ECU Information Display

Actros(963), Antos(963), Arocs(964), Atego(967), Capacity(628), Econic(956), LF(634), MINIBUS(90X), RF(634)

- ASA - Additional steering axle
 - Basic function
 - DTC Analysis
 - ECU Information Display

Actros(963), Antos(963), Arocs(964), Atego(967), Capacity(628), Econic(956), LF(634), MINIBUS(90X), RF(634)

- CTP - Common telematics platform
 - Basic function
 - DTC Analysis
 - ECU Information Display

Actros(963), Antos(963), Arocs(964), Atego(967), Capacity(628), Econic(956), LF(634), MINIBUS(90X), RF(634)

- EAPU - Electronic air-processing unit
 - Basic function
 - DTC Analysis
 - ECU Information Display

Actros(963), Antos(963), Arocs(964), Atego(967), Capacity(628), Econic(956), LF(634), MINIBUS(90X), RF(634)

- LWS/SAS - Steering wheel angle sensor
 - Basic function
 - DTC Analysis
 - ECU Information Display

Actros(963), Antos(963), Arocs(964), Atego(967), Capacity(628), Econic(956), LF(634), MINIBUS(90X), RF(634)

- RDF - Front radar sensor
 - Basic function
 - DTC Analysis
 - ECU Information Display

Actros(963), Antos(963), Arocs(964), Atego(967), Capacity(628), Econic(956), LF(634), MINIBUS(90X), RF(634), UGE(405), UHE(437)

- CGW - Central gateway
 - Basic function
 - DTC Analysis
 - ECU Information Display

Actros(963), Antos(963), Arocs(964), Atego(967), Capacity(628), Econic(956), LF(634), MINIBUS(90X), RF(634), UGE(405), UHE(437)

- CGW - Central gateway
 - Basic function

DTC Analysis
ECU Information Display

Actros(963), Antos(963), Arocs(964), Atego(967), Capacity(628), Econic(956), LF(634), MINIBUS(90X), RF(634), UGE(405), UHE(437)

- COM - Communications interface
 - Basic function
 - DTC Analysis
 - ECU Information Display

Actros(963), Antos(963), Arocs(964), Atego(967), Capacity(628), Econic(956), LF(634), MINIBUS(90X), RF(634), UGE(405), UHE(437)

- COM - Communications interface
 - Basic function
 - DTC Analysis
 - ECU Information Display

Actros(963), Antos(963), Arocs(964), Atego(967), Capacity(628), Econic(956), LF(634), MINIBUS(90X), RF(634), UGE(405), UHE(437)

- ICUC/INS - Instrument
 - Basic function
 - DTC Analysis
 - ECU Information Display

Actros(963), Antos(963), Arocs(964), Atego(967), Capacity(628), Econic(956), LF(634), MINIBUS(90X), RF(634), UGE(405), UHE(437)

- MS/WS - Maintenance system
 - Basic function
 - DTC Analysis
 - ECU Information Display

Actros(963), Antos(963), Arocs(964), Atego(967), Capacity(628), Econic(956), LF(634), MINIBUS(90X), RF(634), UGE(405), UHE(437)

- MSF - Modular switch panel
 - Basic function
 - DTC Analysis
 - ECU Information Display

Actros(963), Antos(963), Arocs(964), Atego(967), Capacity(628), Econic(956), LF(634), MINIBUS(90X), RF(634), UGE(405), UHE(437)

- TCO - Tachograph
 - Basic function
 - DTC Analysis
 - ECU Information Display

Actros(963), Antos(963), Arocs(964), Atego(967), Capacity(628), Econic(956), MINIBUS(90X), RF(634), UGE(405), UHE(437)

- TP - Telematics platform

Basic function
DTC Analysis
ECU Information Display

Actros(963), Antos(963), Arocs(964), Atego(967),
Capacity(628), MINIBUS(90X), RF(634)
- PPC - Predictive powertrain control

Basic function
DTC Analysis
ECU Information Display

Actros(963), Antos(963), Arocs(964), Atego(967),
Capacity(628), LF(634), MINIBUS(90X), RF(634)

- RDK/TPC/TPM - Tire pressure control system

Basic function
DTC Analysis
ECU Information Display

Actros(963), Antos(963), Arocs(964), Atego(967),
Citaro(628), Conecto(628/671), Econic(956),
Integro(627/633), Intouro(613/633), Multego(634),
Tourismo(410/632), Travego(410/629/632), U20(405),
UGN(405)

- TCM - Transmission control

Basic function
DTC Analysis
ECU Information Display

Actros(963), Antos(963), Arocs(964), Atego(967),
Capacity(628), LF(634), MINIBUS(90X), RF(634)

- SRRR - Short range radar (master)

Basic function
DTC Analysis
ECU Information Display

Actros(963), Antos(963), Arocs(964), Atego(967),
Econic(956)

- ABS/ESP/EBS - Antilock brake system

Basic function
DTC Analysis
ECU Information Display

Actros(963), Antos(963), Arocs(964), Atego(967),
Capacity(628), LF(634), MINIBUS(90X), RF(634)

- VRDU - Driver assistance system

Basic function
DTC Analysis
ECU Information Display

Actros(963), Antos(963), Arocs(964), Atego(967),
Econic(956)

- ABS/ESP/EBS - Antilock brake system

Basic function
DTC Analysis
ECU Information Display

Actros(963), Antos(963), Arocs(964), Atego(967),
Capacity(628), MINIBUS(90X)

- ASAM/SCA/SSAM/SCH - Signal acquisition and actuation module

Basic function
DTC Analysis
ECU Information Display

Actros(963), Antos(963), Arocs(964), Atego(967),
Econic(956)

- ALAC/CLCR/CLCS/NR - Level control

Basic function
DTC Analysis
ECU Information Display

Actros(963), Antos(963), Arocs(964), Atego(967),
Capacity(628), MINIBUS(90X)

- EIS/EZS - Electronic ignition lock

Basic function
DTC Analysis
ECU Information Display

Actros(963), Antos(963), Arocs(964), Atego(967),
Econic(956)

- EAPU - Electronic air-processing unit

Basic function
DTC Analysis
ECU Information Display

Actros(963), Antos(963), Arocs(964), Atego(967),
Capacity(628), MINIBUS(90X), RF(634)

- ATA/EDW - Anti-theft alarm system

Basic function
DTC Analysis
ECU Information Display

Actros(963), Antos(963), Arocs(964), Atego(967),
Econic(956), UGE(405), UHE(437)

- PSM - Parameterizable special module

Basic function
DTC Analysis
ECU Information Display

Actros(963), Antos(963), Arocs(964), Atego(967),
Capacity(628), MINIBUS(90X), RF(634)

- EIS/EZS - Electronic ignition lock

Basic function
DTC Analysis
ECU Information Display

Actros(963), Antos(963), Arocs(964), Atego(967),

Econic(956), UGE(405), UHE(437)

- TCC - Truck control center

Basic function
DTC Analysis
ECU Information Display

Actros(963), Antos(963), Arocs(964), Atego(967),
Econic(956), UHE(437)

- BESO/BTS - Battery isolating/disconnect switch

Basic function
DTC Analysis
ECU Information Display

Actros(963), Antos(963), Arocs(964), Atego(967),
UGE(405), UHE(437)

- ABS/ESP/EBS - Antilock brake system

Basic function
DTC Analysis
ECU Information Display

Capacity(628), Citaro(628), Conecto(628/671),
Integro(627/633), Intouro(613/633), LF(634),
MINIBUS(90X), Multego(634), Turismo(410/632),
Travego(410/629/632)

- TCM - Transmission control

Basic function
DTC Analysis
ECU Information Display

Capacity(628), Citaro(628), Conecto(628/671),
Integro(627/633), Intouro(613/633), LF(634),
MINIBUS(90X), Multego(634), Turismo(410/632),
Travego(410/629/632)

- TCM - Transmission control

Basic function
DTC Analysis
ECU Information Display

Capacity(628), Econic(956), LF(634), MINIBUS(90X)
- MCM/MR/NGT/CNG - Engine control/management

Basic function
DTC Analysis
ECU Information Display

Capacity(628), Econic(956), LF(634), MINIBUS(90X),
RF(634), UGE(405), UHE(437)

- MUX1 - Multiplexer 1

Basic function
DTC Analysis
ECU Information Display

Capacity(628), Econic(956), LF(634), MINIBUS(90X),
RF(634), UGE(405), UHE(437)

- MUX2 - Multiplexer 2

Basic function

DTC Analysis
ECU Information Display

Capacity(628), Econic(956), LF(634), MINIBUS(90X),
RF(634), UGE(405), UHE(437)

- MUX3 - Multiplexer 3

Basic function
DTC Analysis
ECU Information Display

Capacity(628), LF(634), MINIBUS(90X)
- ALAC/CLCR/CLCS/NR - Level control

Basic function
DTC Analysis
ECU Information Display

Capacity(628), LF(634), MINIBUS(90X)
- ATC - Articulation turntable controller

Basic function
DTC Analysis
ECU Information Display

Capacity(628), LF(634), MINIBUS(90X)
- DCM4 - Door module 4

Basic function
DTC Analysis
ECU Information Display

Capacity(628), LF(634), MINIBUS(90X)
- DCM5 - Door module 5

Basic function
DTC Analysis
ECU Information Display

Capacity(628), LF(634), MINIBUS(90X)
- EIS/EZS - Electronic ignition lock

Basic function
DTC Analysis
ECU Information Display

Capacity(628), LF(634), MINIBUS(90X)
- EMGW - Gateway electric machine

Basic function
DTC Analysis
ECU Information Display

Capacity(628), LF(634), MINIBUS(90X)
- MHM - Mild hybrid machine

Basic function
DTC Analysis
ECU Information Display

Capacity(628), LF(634), MINIBUS(90X)

- MHS - Mild hybrid memory Basic function DTC Analysis ECU Information Display	Capacity(628), LF(634), MINIBUS(90X), RF(634) - DCM3 - Door module 3 Basic function DTC Analysis ECU Information Display
Capacity(628), LF(634), MINIBUS(90X) - MHS - Mild hybrid memory Basic function DTC Analysis ECU Information Display	Capacity(628), LF(634), MINIBUS(90X), RF(634) - HVAC - Heating and ventilation and air conditioning Basic function DTC Analysis ECU Information Display
Capacity(628), LF(634), MINIBUS(90X) - RKM - Recuperation module Basic function DTC Analysis ECU Information Display	Capacity(628), LF(634), MINIBUS(90X), RF(634) - IBH/ITH/ZHE - Auxiliary heating Basic function DTC Analysis ECU Information Display
Capacity(628), LF(634), MINIBUS(90X), RF(634) - ABS/ESP/EBS - Antilock brake system Basic function DTC Analysis ECU Information Display	Capacity(628), LF(634), MINIBUS(90X), RF(634) - MUX4 - Multiplexer 4 Basic function DTC Analysis ECU Information Display
Capacity(628), LF(634), MINIBUS(90X), RF(634) - ACM - Exhaust aftertreatment Basic function DTC Analysis ECU Information Display	Capacity(628), LF(634), MINIBUS(90X), RF(634) - MUX5 - Multiplexer 5 Basic function DTC Analysis ECU Information Display
Capacity(628), LF(634), MINIBUS(90X), RF(634) - ALAC/CLCR/CLCS/NR - Level control Basic function DTC Analysis ECU Information Display	Capacity(628), LF(634), MINIBUS(90X), RF(634) - MUX6 - Multiplexer 6 Basic function DTC Analysis ECU Information Display
Capacity(628), LF(634), MINIBUS(90X), RF(634) - APS/EHPS/EHZ/ZL - Electrohydraulic auxiliary/power steering Basic function DTC Analysis ECU Information Display	Capacity(628), LF(634), MINIBUS(90X), RF(634) - MUX7 - Multiplexer 7 Basic function DTC Analysis ECU Information Display
Capacity(628), LF(634), MINIBUS(90X), RF(634) - DCM1 - Door module 1 Basic function DTC Analysis ECU Information Display	Capacity(628), LF(634), MINIBUS(90X), RF(634) - MUX8 - Multiplexer 8 Basic function DTC Analysis ECU Information Display
Capacity(628), LF(634), MINIBUS(90X), RF(634) - DCM2 - Door module 2 Basic function DTC Analysis ECU Information Display	Capacity(628), LF(634), MINIBUS(90X), RF(634) - MUX9 - Multiplexer 9 Basic function DTC Analysis ECU Information Display

Capacity(628), MINIBUS(90X)
- ABS/ESP/EBS - Antilock brake system
Basic function
DTC Analysis
ECU Information Display

UGE(405), UHE(437)
- TCM - Transmission control
Basic function
DTC Analysis
ECU Information Display

Capacity(628), MINIBUS(90X)
- CPC/FR - Drive control
Basic function
DTC Analysis
ECU Information Display

[Back to Index](#)

Capacity(628), MINIBUS(90X)
- CPC/FR - Drive control
Basic function
DTC Analysis
ECU Information Display

Capacity(628), MINIBUS(90X), RF(634)
- HVAC - Heating and ventilation and air conditioning
Basic function
DTC Analysis
ECU Information Display

Capacity(628), MINIBUS(90X), RF(634)
- HVAC - Heating and ventilation and air conditioning
Basic function
DTC Analysis
ECU Information Display

Capacity(628), MINIBUS(90X), RF(634)
- MPC - Multifunction camera
Basic function
DTC Analysis
ECU Information Display

UGE(405)
- ICM - Implement carrier module
Basic function
DTC Analysis
ECU Information Display

UGE(405), UHE(437)
- RDK/TPC/TPM - Tire pressure control system
Basic function
DTC Analysis
ECU Information Display

UGE(405), UHE(437)
- STCU - Special trucks control unit
Basic function
DTC Analysis
ECU Information Display

MAN

New Model & System added

- TG-A, TG-S, TG-X 16PIN Connector
- EDC
- ECAS
- EBS
- FFR
- Astronic
- Instrument
- ZBR
- Door Module
- Air-Conditioning Control
- Airtronic d2/D4 Eberspacher
- PTM
- VDO KSM

[Back to Index](#)

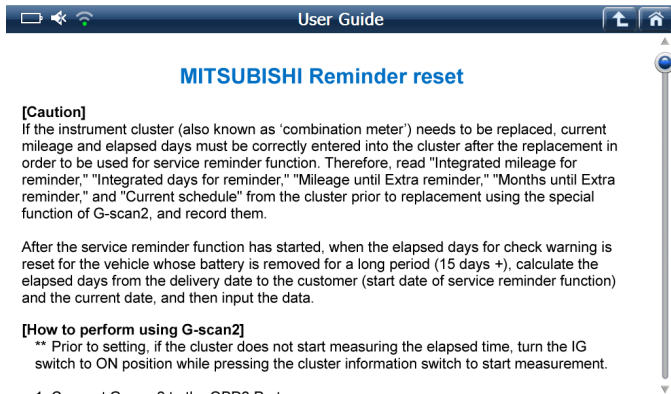
SCANIA

New Model & System added

- SCANIA 16PIN Connector
- EMS(Engine Management System)
- GMS(Transmission Control System)
- BMS(Brake Management System)
- SMS(Suspension Control System)
- ICL(Instrument Panel)
- APS(Compressed Air Supply)
- CCS(Smart Climate Control System)
- COO(Coordinator)
- VIS(Lighting System)
- BCS(Bus Chassis System)
- TCO(Mileage Recorder)
- LAS(Locking And Alarm System)

[Back to Index](#)

ETC.

User Guide added**- MITSUBISHI Reminder reset**

MITSUBISHI Reminder reset

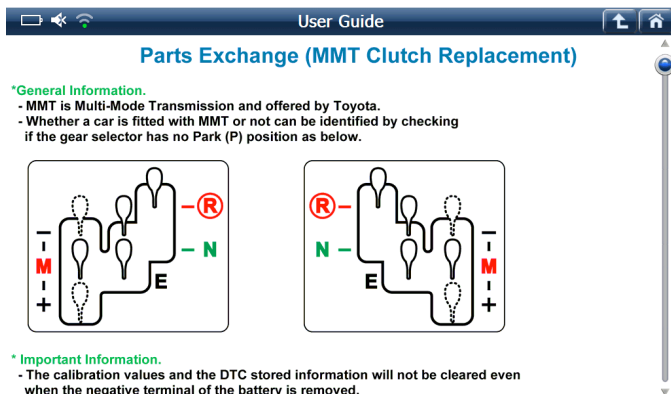
[Caution]
If the instrument cluster (also known as 'combination meter') needs to be replaced, current mileage and elapsed days must be correctly entered into the cluster after the replacement in order to be used for service reminder function. Therefore, read "Integrated mileage for reminder," "Integrated days for reminder," "Mileage until Extra reminder," "Months until Extra reminder," and "Current schedule" from the cluster prior to replacement using the special function of G-scan2, and record them.

After the service reminder function has started, when the elapsed days for check warning is reset for the vehicle whose battery is removed for a long period (15 days +), calculate the elapsed days from the delivery date to the customer (start date of service reminder function) and the current date, and then input the data.

[How to perform using G-scan2]
** Prior to setting, if the cluster does not start measuring the elapsed time, turn the IG switch to ON position while pressing the cluster information switch to start measurement.

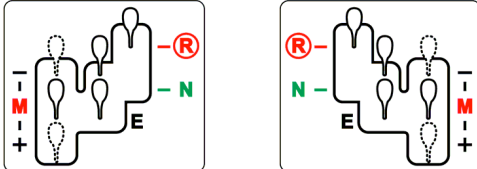
1. Connect G-scan2 to the OBD2 Port

Applicable device : G-scan2, G-scanTab

- TOYOTA Part Exchange (MMT Clutch Replacement)

Parts Exchange (MMT Clutch Replacement)

***General Information.**
- MMT is Multi-Mode Transmission and offered by Toyota.
- Whether a car is fitted with MMT or not can be identified by checking if the gear selector has no Park (P) position as below.



***Important Information.**
- The calibration values and the DTC stored information will not be cleared even when the negative terminal of the battery is removed.

Applicable device : G-scan2

[Back to Index](#)