

TOYOTA/LEXUS	2	HYUNDAI/KIA TRUCK/BUS	11
NISSAN/INFINITI.....	2	SMART	12
HONDA /ACURA	2	MAHINDRA.....	12
MAZDA	2	TATA	12
SUZUKI/MARUTI	2	ETC	12
SUBARU	2		
ISUZU.....	3		
FUSO.....	3		
AUDI/VW/SEAT/SKODA.....	3		
FORD EU	3		
RENAULT / DACIA	3		
BMW	4		
LAND ROVER.....	4		
MERCEDES BENZ.....	5		
FIAT / ALFA ROMEO / LANCIA.....	6		
PORSCHE.....	6		
FORD USA	7		
CHRYSLER/JEEP/DODGE.....	7		
OPEL / VAUXHALL	8		
HOLDEN	10		
MERCEDES COMMERCIAL.....	10		
HYUNDAI	10		
KIA.....	11		

TOYOTA/LEXUS

New type system and function added (15 systems)

- Stop and Start
- EV
- FC (Fuel Cell)
- FC External Power Supply
- Brake
- Four Wheel Drive
- Tire Pressure Monitor
- EMPS
- Electric Parking Brake
- Front Recognition Camera
- Panoramic View Monitor
- Head Up Display
- Clearance Warning
- Rain and/or Humidity Sensor
- Power Source Control

[Back to Index](#)

NISSAN/INFINITI

New type system & function added (1 system)

- ABS (CAN)

[Back to Index](#)

HONDA /ACURA

New system added (4 systems)

- BCM_Auto Retractable Mirror
- BCM_Power Seat/Power Mirror
- BCM_Power Tailgate
- BCM_Bluetooth

New type added (11 systems)

- VSA
- BCM_Lighting
- BCM_Doorlocks
- BCM_Keyless
- BCM_Security
- BCM_Wiper
- BCM_HVAC
- BCM_POWER WINDOW
- BCM_Parking Sensor
- BCM_POWER WINDOW
- BCM_Seat Heater

Function improvement and bug fixes

[Back to Index](#)

MAZDA

Special function added (3 models 1 system)

- CX-5 2.2L SH PCM(Powertrain Control Module)
- AXELA/MAZDA3 2.2L SH PCM(Powertrain Control Module)
- ATENZA/MAZDA6 2.2L SH PCM(Powertrain Control Module)

New Model Added (1 model)

- AXELA/MAZDA3 1.5L P5

[Back to Index](#)

SUZUKI/MARUTI

New type system & function added (1 system)

- Immo (CAN)

[Back to Index](#)

SUBARU

New type system added (15 systems)

- Engine
- Immo/Keyless #1
- Immo/Keyless #2
- SRS Airbag
- MFD(Multi function display)
- ODS(Occupant detection system)
- AHLS(Automatic headlight leveling system)
- BSD-L(Blind spot detection left side)
- BSD-R(Blind spot detection right side)
- Reverse automatic braking
- Driver monitor
- Power seat memory
- Power Rear Gate
- PSS(Power steering system) #1
- PSS(Power steering system) #2

Function improvement and bug fixes

[Back to Index](#)

ISUZU

New type system added (1 system)

- 0199 R1

New Function added (159 systems)

- VIN PROGRAMMING (JAPAN)

Function improvement and bug fixes

[Back to Index](#)

FUSO

New Model Added (2 models)

AERO ACE (2021MY)

- CGW - Central gateway
- ACM - BlueTec® Aftertreatment system ECU
- CDS - Central data memory
- CLCS - Level control
- CPC - Common powertrain controller
- CTP - Common Telematics Platform
- DAGW - ACTIVE ATTENTION ASSIST System
- EAPU - Electronic Air-Processing Unit
- EBS - Electronic brake system
- ICUC - Instrument cluster
- MCM2.1 - Motor Control Module
- MPC - Multifunction camera
- MS - Maintenance system
- MSF - Modular switch panel
- RCM - Retarder
- RDF - Radar sensor
- SAS - Steering wheel angle sensor
- SRRL - Short range radar Left
- TCM - Transmission control
- VRD - Driver assistance system

SUPER GREAT (2021MY)

- CGW - Central gateway
- ACM - AdBlue(R) exhaust aftertreatment unit
- APS3 - Adaptive power steering
- ASAM - Advanced signal acquisition and actuation module
- CDS - Central data memory
- CLCS - Level control
- CPC - Common powertrain controller
- CTP - Common Telematics Platform
- DAGW - ACTIVE ATTENTION ASSIST System
- EAPU - Electronic Air-Processing Unit

- EBS - Electronic brake system
- EIS - Electronic ignition lock
- ICUC - Instrument cluster
- PPC - Predictive Powertrain Control
- MCM - Motor Control Module Control unit
- MPC - Multifunction camera
- MS - Maintenance system
- RDF - Radar sensor
- RCM - Retarder
- SAS - Steering wheel angle sensor
- SRRL - Short range radar Left
- SSAM - Single signal acquisition and actuation module
- TCC - Truck Control Center
- TCM - Transmission control
- TPM - Tire pressure monitor
- VRDU - Driver assistance system
- XMC - SAM with additional functions

[Back to Index](#)

AUDI/VW/SEAT/SKODA

Function improved (4 Systems)

- 01-Engine Electronics (UDS)
- 19-CAN Gateway (CAN Type)
- 92-Transmission (UDS)
- A5-Front sensors Driver Assistance (UDS)

[Back to Index](#)

FORD EU

New Model Added (1 model)

- MONDEO 1.8L DURATEC-HE/I4 ~ 2003 TIVCT 2021

[Back to Index](#)

RENAULT / DACIA

New System added (1 system)

- KADJAR A.B.S

[Back to Index](#)

BMW

New Model Added (2 models)

3 series – G20/G21 (2019 - present)

- LMV (Longitudinal torque distribution)
- DME (Digital Motor Electronics)
- EGS (Electronic transmission control)
- GWS (Gear selector switch)
- SCR (Selective Catalytic Reduction)
- DSC (Dynamic Stability Control)
- EPS (Electromechanical power steering)
- HRSNL (Rear radar sensor near range left)
- HRSNR (Rear radar sensor near range right)
- VIP (Virtual integration system)
- ACSM (Crash safety module)
- BDC (Body Domain Controller)
- HU-H (Headunit High)
- CON (Controller)
- FLEL (Frontal Light Electronics Left)
- FLER (Frontal Light Electronics Right)
- FZD (Roof function centre)
- IHKA (Integrated automatic heating / air conditioning system)
- KAFAS (Camera-based driver assist system)
- KOMBI (Instrument panel)
- PMA (Parking Manoeuvring Assistant)
- RAM (Receiver audio module)
- SMFA (Seat module, driver)
- TCB (Telematic Communication Box)
- TRSVC (All-round vision camera)
- ZGM (Central Gateway Module)

6 series – G32 (2018 - present)

- DME (Digital Motor Electronics)
- EGS (Electronic transmission control)
- GWS (Gear selector switch)
- VTG (Transfer box)
- DSC (Dynamic Stability Control)
- EPS (Electromechanical power steering)
- FRSF (Long-distance range front radar sensor)
- HRSNL (Rear radar sensor near range left)
- HRSNR (Rear radar sensor near range right)
- SRSNVR (Side radar sensor near range front right)
- VDP (Vertical dynamics platform)
- VIP (Virtual integration system)
- ACSM (Crash safety module)
- BDC (Body Domain Controller)
- CON (Controller)
- FLEL (Frontal Light Electronics Left)
- FLER (Frontal Light Electronics Right)
- FZD (Roof function centre)
- HKFM (Tailgate function module)

- HU-H (Headunit High)
- IHKA (Integrated automatic heating / air conditioning system)
- KAFAS (Camera-based driver assist system)
- KOMBI (Instrument panel)
- PMA (Parking Manoeuvring Assistant)
- RAM (Receiver audio module)
- SMFA (Seat module, driver)
- SMBF (Seat module, passenger)
- TCB (Telematic Communication Box)
- TRSVC (All-round vision camera)
- ZGM (Central Gateway Module)

[Back to Index](#)

LAND ROVER

New function added (70 systems)

- PCM (Powertrain Control Module) (SI6 - 3.2 Petrol)
- PCM (Powertrain Control Module) (DW12 - 2.2 DIESEL (Low Power))
- PCM (Powertrain Control Module) (DW12 - 2.2 DIESEL (High power))
- PCM (Powertrain Control Module) (DW12 - 2.2 DIESEL with cDPF (High power))
- TCM (Transmission Control Module)
- PCM (Powertrain Control Module) (GTDi - 2.0 PETROL (Low power))
- PCM (Powertrain Control Module) (GTDi - 2.0 PETROL (High power))
- PCM (Powertrain Control Module) (SI6 - 3.2 PETROL, ULEV 2 NAS)
- BCM (Body Control Module)
- ABS (ABS Control Module)
- PBM (Parking Brake Control Module)
- RDCM (Rear Differential Control Module)
- PCM (Powertrain Control Module) (406PN - V6 4.0 Petrol)
- PCM (Powertrain Control Module) (508PN - V8 5.0 NA Petrol)
- PCM (Powertrain Control Module) (306DT - V6 3.0 Hi Pwr Diesel non cDPF)
- PCM (Powertrain Control Module) (306DT - V6 3.0 Hi Pwr Diesel with cDPF)
- PCM (Powertrain Control Module) (306DT - V6 3.0 Lo Pwr Diesel with cDPF)
- PCM (Powertrain Control Module) (306DT - V6 3.0 Lo Pwr Diesel non cDPF)
- TCCM (Transfer Case Control Module)
- AHCM (Auxiliary Heater Control Module)
- PCM (Powertrain Control Module) (276DT - V6 2.7 Diesel non cDPF)

- SASM (Steering Angle Sensor Module)
- PCM (Powertrain Control Module) (448DT - V8 4.4 Diesel)
- PCM (Powertrain Control Module) (448DT - V8 4.4 Diesel WITH DPF)
- AAM (Audio Amplifier Module)
- ACM (Audio Front Control Module)
- ATCM (All Terrain Control Module)
- AUCM (Head up Display Cooling Fan Module)
- BECM (Battery Energy Control Module)
- CAV (Connect and View Module)
- CCM (Adaptive Speed Control Control Module)
- CHCM (Chassis Control Module)
- CHCMB (Chassis Control Module B)
- DABM (Digital Audio Broadcast Module)
- DDM (Driver's Door Module)
- DRDM (Driver's Rear Door Module)
- DSM (Driver's Seat Module)
- FCDIM (Front Control/Display Interface Module)
- FCIM (Front Controls Interface Module)
- FCIMB (Front Controls Interface Module B)
- FCIMC (Front Controls Interface Module C)
- GPSM (General Proximity Sensor Module)
- GSM (Gear Shift Module)
- GWM (Gateway Module)
- HVAC (Heating Ventilation and Air Conditioning Control Module)
- IPC (Instrument Cluster Control Module)
- IPMA (Image Processing Control Module A)
- IPMB (Image Processing Module B)
- KVM (Keyless Vehicle Module)
- PAM (Parking Assist Control Module)
- PDM (Passenger's Door Module)
- PRDM (Passenger's Rear Door Module)
- PSCM (Power Steering Control Module)
- PSM (Passenger's Seat Module)
- RBM (Running Board Module)
- RCM (Restraints Control Module)
- REM (Rear Entertainment Control Module)
- RGTM (Rear Gate/Trunk Module)
- RGTMB (Rear Gate/Trunk Module B)
- RHVAC (Rear Heating Ventilation and Air Conditioning Control Module)
- SODL (Side Object Detection - Left)
- SODR (Side Object Detection - Right)
- SPMA (Seatbelt Pretensioner Control Module A)
- SPMB (Seatbelt Pretensioner Control Module B)
- SRM (Satellite Audio Unit Module)
- TCU (Telematic Control Unit Module)
- TPM (Tyre Pressure Monitoring System)
- TVM (Television Module)
- AWDCM (All Wheel Drive Control Module)
- EPB TIP

[Back to Index](#)

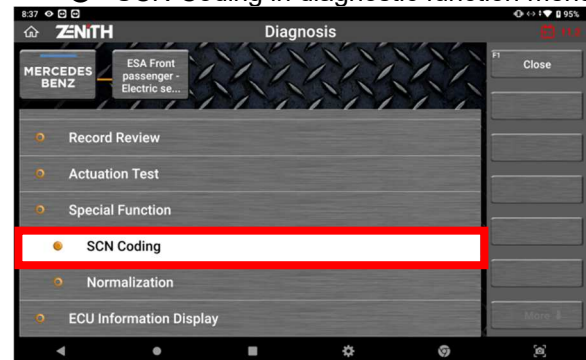
Więcej informacji pod numerem tel. 601-817-201 oraz na www.gscan.com.pl

MERCEDES BENZ

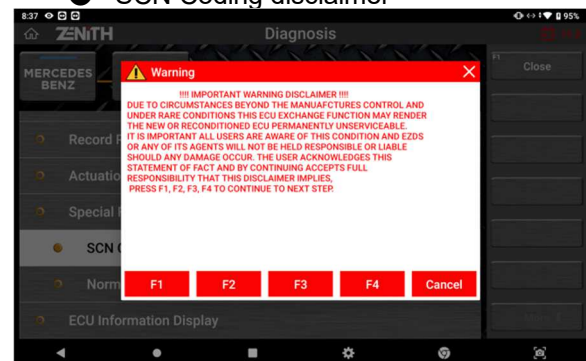
SCN coding added (1 function)

- CAN&UDS Type

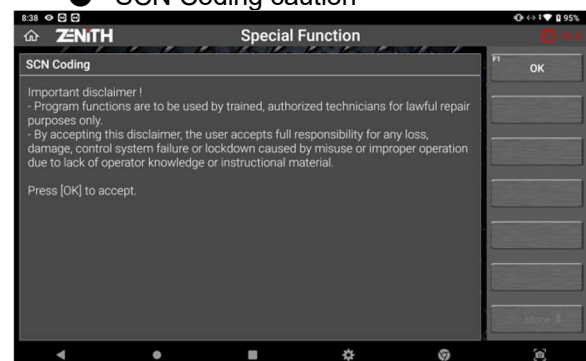
● SCN Coding in diagnostic function menu



● SCN Coding disclaimer



● SCN Coding caution



New chassis added (2 chassis)

- GLE-CLASS (166)
- GLS-CLASS (166)

New function added (79 systems)

- AUDIO/COMAND

- NBR-LR/IRS-HLA - Left rear range radar
- NBR-RR/IRS-HRA - Right rear range radar
- MFK - Multifunction camera
- ETC - Electronic transmission control
- ATA - ATA [EDW]/tow-away/interior protection
- AHE - Trailer recognition
- KAB - Camera cover
- PTCU - Common powertrain controller
- Sound generator for exhaust system
- VG - Transfer case
- BMS - Battery management system
- ZAN - Audio/COMAND display
- FSCU/FSCU-L - Control unit Fuel pump
- AAC - Automatic air conditioning
- AMG DRIVE UNIT
- HAL - Left rear axle steering
- HAL - Right rear axle
- SCM [MRM] - Steering column module
- DAB/SDAR - Digital/Satellite radio
- DTA - Mbrace or TELEAID/GPS Box
- RevETR-LF - Left front reversible emergency tensioning retractor
- RevETR-RF - Right front reversible emergency tensioning retractor
- RVC/VDS - Convertible roof control
- BNS/BMS - Battery sensor
- DS-RF/AMKS-RF - Dynamic/Active seat
- SG-EM - Power electronics
- 48V - Starter-alternator
- ABS/ESP - Electronic stability program
- SG-DDW - DC/DC converter control unit
- PSD/MSC - Sliding roof control
- 360' - Camera
- Headlamp/Headlamp-L - Headlamp control unit
- Headlamp-R - Headlamp control unit
- DTR - DISTRONIC
- SG-MSND - Engine sound
- DSP/PPAMKS - Pneumatic pump for seat
- COU [ZBE] - Audio/COMAND operating unit
- ES - Electrical power steering
- NSA - Night View Assist
- RFK - Backup camera
- MTAS - Mobile phone cradle
- EKMK - Electric refrigerant compressor
- Head-up display
- Left rear ESE - Left electrical seat adjustment
- ME/CDI/CNG - Engine control unit
- MFL - Steering wheel shift buttons
- PTS - Parktronic system
- Right rear ESE - Right electrical seat adjustment
- SG-AWF - Collision prevention assist
- DCM-RL - Door control module rear left
- DCM-RR - Door control module rear right
- SCM - Steering column module AMG
- BMS - Battery management system 1

- BMS - Battery management system 2
- FLANFS - Fire extinguishing system and emergency fresh air system
- SAM-R/BSN - Rear signal acquisition and actuation module/Battery sensor
- CSHV - Crash sensor/high-voltage battery
- ETC - Exhaust air turbocharger
- Fuel cell control unit
- Fuel cell management system
- Hydrogen tank control unit
- Voltage converter of fuel cell
- Electric step
- AGS - Active belt buckle
- HKS - Tailgate control
- AVE-H - Rear audio video unit
- IRS-VL - Left side intelligent radar sensor system
- IRS-VR - Right side intelligent radar sensor system
- RD - Radio
- BMS-H - Battery management system/ rear (slave)
- BMS-M - Battery management system/ center (slave)
- BMS-V - Battery management system/ front (slave)
- MBAC - Mercedes-Benz Advanced Control
- OLU - Onboard Logic Unit
- MF-LR 1 - Control of massage function in rear seat in first seat row on left
- MF-RR 1 - Control of massage function in rear seat in first seat row on right
- OCP - Overhead control panel
- SCR - Selective catalytic reduction

Function improvement and bug fixes

[Back to Index](#)

FIAT / ALFA ROMEO / LANCIA

New function added (3 systems)

- Parking control #1
- Parking control #2
- Parking control #3

Function improvement and bug fixes

[Back to Index](#)

PORSCHE

Function improvement and bug fixes

[Back to Index](#)

FORD USA

New Model Added (9 models)

- Explorer 2.3L EcoBoost - Gas Turbocharged Direct Injection 2020 ~
- Explorer 3.3L Gasoline Direct injection 2020 ~
- Explorer 3.3L Full Hybrid Electric Vehicle 2020 ~
- F150 2.7L EcoBoost - Gas Turbocharged Direct Injection 2021 ~
- F150 3.0L Power Stroke - Direct Injection Turbo Diesel 2021 ~
- F150 3.3L Gasoline Direct injection 2021 ~
- F150 3.5L EcoBoost - Gas Turbocharged Direct Injection 2021 ~
- F150 3.5L Full Hybrid Electric Vehicle 2021 ~
- F150 5.0L TiVCT 2021 ~

[Back to Index](#)

CHRYSLER/JEEP/DODGE

New type system and function added (15 models)

2018~2019 Pacifica

- HVAC (Heat Vent A/C)
- ICS (Integrated Center Stack)
- LBSS (Left Blind Spot Sensor)
- MSMD (Memory Seat Module)
- OCM (Occupant Classification Module)
- PCM (Powertrain Control Module)
- PSDML (Power Sliding Door Left)
- PSDMR (Power Sliding Door Right)
- RBSS (Right Blind Spot Sensor)
- RFH (Radio Frequency Hub)

2018~2019 Town&Country

- HVAC (Heat Vent A/C)
- ICS (Integrated Center Stack)
- LBSS (Left Blind Spot Sensor)
- MSMD (Memory Seat Module)
- OCM (Occupant Classification Module)
- PCM (Powertrain Control Module)
- PSDML (Power Sliding Door Left)
- PSDMR (Power Sliding Door Right)
- RBSS (Right Blind Spot Sensor)
- RFH (Radio Frequency Hub)

2018~2019 Durango

- AHLM (Auto Headlamp Leveling Module)
- HVAC (Heat Vent A/C)
- RFH (Radio Frequency Hub)

- VES2 (Second Row Screen)
- VES3 (Video Entertainment System 3)
- PLM (Power Liftgate Module)

2018~2019 Grand Cherokee

- ANC (Active Noise Cancelation)
- AHLM (Auto Headlamp Leveling Module)
- DTV (Digital Television)
- HVAC (Heat Vent A/C)
- RFH (Radio Frequency Hub)
- VES2 (Second Row Screen)
- VES3 (Video Entertainment System 3)
- PLM (Power Liftgate Module)

2019 Renegade

- ABS (Anti Lock Brake System)
- BCM (Body Control Module)
- ETM (Entertainment Telematic Module)
- HALF (Haptical Lane Feedback)
- PAM (Parking Aid Module)
- PCM (Powertrain Control Module)

2019 3500 Pickup

- ABS (Anti Lock Brake System)
- AFLS (Adaptive Front Light System)
- ASCM (Air Suspension Control Module)
- DDM (Drivers Door Module)
- ESM (Electronic Shifter Module)
- HVAC (Heat Vent A/C)
- ICS (Integrated Center Stack)
- IPC (Instrument Panel Cluster)
- LBSS (Left Blind Spot Sensor)
- ORC (Occupant Restraint Control)
- PCM (Powertrain Control Module)
- PDM (Passenger Door Module)
- RBSS (Right Blind Spot Sensor)
- RFH (Radio Frequency Hub)
- SCCM (Steering Column Module)
- TCM (Transmission Control Module)

2019 2500 Pickup

- ABS (Anti Lock Brake System)
- AFLS (Adaptive Front Light System)
- ASCM (Air Suspension Control Module)
- DDM (Drivers Door Module)
- ESM (Electronic Shifter Module)
- HVAC (Heat Vent A/C)
- ICS (Integrated Center Stack)
- IPC (Instrument Panel Cluster)
- LBSS (Left Blind Spot Sensor)
- ORC (Occupant Restraint Control)
- PCM (Powertrain Control Module)
- PDM (Passenger Door Module)
- RBSS (Right Blind Spot Sensor)
- RFH (Radio Frequency Hub)

- SCCM (Steering Column Module)
- TCM (Transmission Control Module)

2019 4500/5500

- ABS (Anti Lock Brake System)
- AFLS (Adaptive Front Light System)
- ASCM (Air Suspension Control Module)
- DDM (Drivers Door Module)
- ESM (Electronic Shifter Module)
- HVAC (Heat Vent A/C)
- ICS (Integrated Center Stack)
- IPC (Instrument Panel Cluster)
- LBSS (Left Blind Spot Sensor)
- ORC (Occupant Restraint Control)
- PCM (Powertrain Control Module)
- PDM (Passenger Door Module)
- RBSS (Right Blind Spot Sensor)
- RFH (Radio Frequency Hub)
- SCCM (Steering Column Module)
- TCM (Transmission Control Module)

2019 1500

- ABS (Anti Lock Brake System)
- AFLS (Adaptive Front Light System)
- ASCM (Air Suspension Control Module)
- DDM (Drivers Door Module)
- ESM (Electronic Shifter Module)
- HVAC (Heat Vent A/C)
- ICS (Integrated Center Stack)
- IPC (Instrument Panel Cluster)
- LBSS (Left Blind Spot Sensor)
- ORC (Occupant Restraint Control)
- PCM (Powertrain Control Module)
- PDM (Passenger Door Module)
- RBSS (Right Blind Spot Sensor)
- RFH (Radio Frequency Hub)
- SCCM (Steering Column Module)
- TCM (Transmission Control Module)

2019 Wrangler

- BCM (Body Control Module)
- PCM (Powertrain Control Module)
- RFH (Radio Frequency Hub)

2019 Cherokee

- ABS (Anti Lock Brake System)
- BCM (Body Control Module)
- ETM (Entertainment Telematic Module)
- HALF (Haptical Lane Feedback)
- PAM (Parking Aid Module)
- PCM (Powertrain Control Module)
- SCCM (Steering Column Module)
- IPC (Instrument Panel Cluster)

2019 Challenger

- BCM (Body Control Module)
- LBSS (Left Blind Spot Sensor)
- RBSS (Right Blind Spot Sensor)
- RFH (Radio Frequency Hub)

2019 Charger

- BCM (Body Control Module)
- DSM (Display Screen Module)
- LBSS (Left Blind Spot Sensor)
- RBSS (Right Blind Spot Sensor)
- RFH (Radio Frequency Hub)

2019 300

- AFLS (Adaptive Front Light System)
- BCM (Body Control Module)
- LBSS (Left Blind Spot Sensor)
- RBSS (Right Blind Spot Sensor)
- RFH (Radio Frequency Hub)

2019 Compass

- BCM (Body Control Module)
- CSWM (Comfort Seat Wheel Module)
- PCM (Powertrain Control Module)

[Back to Index](#)

OPEL / VAUXHALL

New system added (139 systems)

- Corsa-E 2019 Engine Control Module 1.0L Euro 6B (NE4)
- Corsa-E 2019 Engine Control Module 1.0L Euro 6D (NCL)
- Corsa-E 2019 Engine Control Module 1.0L Euro 6D Temporary (NCV)
- Corsa-E 2019 Engine Control Module 1.2L (LDC)
- Corsa-E 2019 Engine Control Module 1.4L (LDD)
- Corsa-E 2019 Engine Control Module 1.4L (LUJ)
- Corsa-E 2019 Chassis Control Module
- Corsa-E 2019 Transmission Control Module
- Corsa-E 2019 Electronic Brake Control Module
- Corsa-E 2019 Power Steering Control Module
- Corsa-E 2019 Body Control Module System Halogen (T4A TT4)
- Corsa-E 2019 Body Control Module System High Intensity Discharge (T4F TT2 TT6 TT7 TT8)
- Corsa-E 2019 Inflatable Restraint Sensing and Diagnostic Module
- Corsa-E 2019 Instrument Cluster
- Corsa-E 2019 Trailer Lighting Control Module
- Corsa-E 2019 Radio (IOA)
- Corsa-E 2019 Radio (UH7)

- Corsa-E 2019 Radio (UM7)
- Corsa-E 2019 Radio (UL5)
- Corsa-E 2019 Telematics Communication Interface control Module
- Corsa-E 2019 HVAC Control Module
- Corsa-E 2019 Parking Assist Control Module (not Equipped)
- Corsa-E 2019 Parking Assist Control Module (With Rear Sensors UD7)
- Corsa-E 2019 Parking Assist Control Module (with Front and Rear Sensors UD5)
- Corsa-E 2019 Frontview Camera Module
- Mokka 2018 Engine Control Module 1.4L (LE2)
- Mokka 2018 Engine Control Module 1.4L (LUJ)
- Mokka 2018 Engine Control Module 1.6L (LDE)
- Mokka 2018 Engine Control Module 1.6L (LVL) Euro 6 (NCP)
- Mokka 2018 Engine Control Module 1.6L (LVL) Euro 6B (NE4)
- Mokka 2018 Engine Control Module 1.6L (LVL) Euro 6D Temporary (NCV)
- Mokka 2018 Engine Control Module 1.6L (LWV)
- Mokka 2018 Engine Control Module 1.6L (LXO) Euro 6 (NCP)
- Mokka 2018 Engine Control Module 1.6L (LXO) Euro 6B (NE4)
- Mokka 2018 Engine Control Module 1.6L (LXO) Euro 6D Temporary (NCV)
- Mokka 2018 Engine Control Module 1.8L (2H0)
- Mokka 2018 Transmission Control Module
- Mokka 2018 Rear Differential Clutch Control Module
- Mokka 2018 Rear Electronic Brake Control Module
- Mokka 2018 Power Steering Control Module
- Mokka 2018 Steering Wheel Angle Sensor Module
- Mokka 2018 Body Control Module
- Mokka 2018 Serial Data Gateway Module
- Mokka 2018 Inflatable Restraint Sensing and Diagnostic Module
- Mokka 2018 Instrument Cluster
- Mokka 2018 Radio Controls Module
- Mokka 2018 Headlamp Control Module
- Mokka 2018 Trailer Lighting Control Module
- Mokka 2018 Radio (IO6) Module
- Mokka 2018 Radio (IOA) Module
- Mokka 2018 Radio (IP1) Module
- Mokka 2018 Amplifier Module
- Mokka 2018 Human Machine Interface Control Module
- Mokka 2018 Telematics Communication Interface Control Module
- Mokka 2018 HVAC Control Module
- Mokka 2018 Front Seat Heating Control Module
- Mokka 2018 Keyless Entry Control Module
- Mokka 2018 Parking Assist Control Module
- Mokka 2018 Frontview Camera Module
- Mokka 2018 Steering Column Lock Control Module
- Mokka 2018 Power Supply Transformer Module
- Mokka 2019 Engine Control Module 1.4L (LUJ)
- Mokka 2019 Engine Control Module 1.6L (LVL)
- Mokka 2019 Engine Control Module 1.6L (LXO)
- Mokka 2019 Engine Control Module 1.8L (2H0)
- Mokka 2019 Transmission Control Module
- Mokka 2019 Rear Differential Clutch Control Module
- Mokka 2019 Electronic Brake Control Module
- Mokka 2019 Power Steering Control Module
- Mokka 2019 Steering Wheel Angle Sensor module
- Mokka 2019 Body Control Module
- Mokka 2019 Serial Data Gateway Module
- Mokka 2019 Inflatable Restraint Sensing and Diagnostic Module
- Mokka 2019 Instrument Cluster Module
- Mokka 2019 Radio Controls Module
- Mokka 2019 Headlamp Control Module
- Mokka 2019 Trailer Lighting Control Module
- Mokka 2019 Radio (IO6) Module
- Mokka 2019 Radio (IOA) Module
- Mokka 2019 Radio (IP1) Module
- Mokka 2019 Amplifier Module
- Mokka 2019 Human Machine Interface Control Module
- Mokka 2019 Telematics Communication Interface Control Module (UE1) Module
- Mokka 2019 Telematics Communication Interface Control Module (With GLONASS) (UI3) Module
- Mokka 2019 HVAC Control Module
- Mokka 2019 Front Seat Heating Control Module
- Mokka 2019 Keyless Entry Control Module
- Mokka 2019 Parking Assist Control Module
- Mokka 2019 Frontview Camera Module (UFL)
- Mokka 2019 Frontview Camera Module Headlamp High Beam Control Module - Gentex
- Mokka 2019 Steering Column Lock Control Module
- Mokka 2019 Power Supply Transformer Module
- Astra-K 2018 Electronic Brake Control Module
- Astra-K 2018 Multi-Axis Acceleration Sensor Module
- Astra-K 2018 Power Steering Control Module
- Astra-K 2018 Body Control Module(Hatchback)
- Astra-K 2018 Body Control Module(Station Wagon)
- Astra-K 2018 Serial Data Gateway Module
- Astra-K 2018 Inflatable Restraint Sensing and diagnostic Module
- Astra-K 2018 Instrument Cluster (LDD)Module
- Astra-K 2018 Instrument Cluster (UDC)Module
- Astra-K 2018 Radio Controls Module
- Astra-K 2018 HVAC Controls Module
- Astra-K 2018 Headlamp Control Module
- Astra-K 2018 Trailer Lighting Control Module
- Astra-K 2018 Radio (IO6) Module
- Astra-K 2018 Radio (IOB) Module
- Astra-K 2018 Radio (IOB) Module
- Astra-K 2018 Radio Chime (UL5) Module
- Astra-K 2018 Human Machine Interface Control

Module

- Astra-K 2018 HVAC Control Module
- Astra-K 2018 Liftgate Control Module
- Astra-K 2018 Keyless Entry Control Module
- Astra-K 2018 Parking Assist Control Module(UFQ)
- Astra-K 2018 Parking Assist Control Module(UD7)
- Astra-K 2018 Parking Assist Control Module(UD5)
- Astra-K 2018 FrontView Camera Module (UGN)
- Astra-K 2018 FrontView Camera Module (UHY)
- Astra-K 2018 Steering Column Lock Control Module
- Astra-K 2018 Power Supply Transformer Module
- Astra-K 2019 Engine Control Module 1.0 (LE1) Euro 6B (NE4)
- Astra-K 2019 Engine Control Module 1.0 (LE1) Euro 6D temporary (NCV)
- Astra-K 2019 Engine Control Module 1.6L (LVL) Euro 6 (NCP)
- Astra-K 2019 Engine Control Module 1.6L (LVL) Euro 6B (NE4)
- Astra-K 2019 Engine Control Module 1.6L (LVL) Euro 6D Temporary (NCV)
- Astra-K 2019 Engine Control Module 1.6L (LWC) Euro 6B (NE4)
- Astra-K 2019 Engine Control Module 1.6L (LWC) Euro 6D Temporary (NCV)
- Astra-K 2019 Engine Control Module 1.6L (LXO) Euro 6 (NCP)
- Astra-K 2019 Engine Control Module 1.6L (LXO) Euro 6B (NE4)
- Astra-K 2019 Engine Control Module 1.6L (LXO) Euro 6D Temporary (NCV)
- Astra-K 2019 Electronic Brake Control Module
- Astra-K 2019 Multi-Axis Acceleration Sensor Module
- Astra-K 2019 Power Steering Control Module
- Astra-K 2019 Body Control Module (Hatchback)
- Astra-K 2019 Body Control Module (Station Wagon)
- Astra-K 2019 Serial Data Gateway Module
- Astra-K 2019 Headlamp control Module
- Astra-K 2019 Human Machine Interface Control Module
- Astra-K 2019 Telematics Communication Interface Control Module

New type added (6 systems)

- Zafira-B ECC/SAC (Electronic Climate Control)
- Zafira-B REC (Rear Electrical Centre)
- Zafira Engine Control Module Z 18 XE
- Corsa-D Body Control Module System
- Corsa-D ECC IPC (Instrument)
- Corsa-D Engine Control Module (A 13 DTE)

[Back to Index](#)

HOLDEN

New system added (1 system)

- VY Commodore ECC

Function improvement and bug fixes

[Back to Index](#)

MERCEDES COMMERCIAL

Function improvement and bug fixes

[Back to Index](#)

HYUNDAI

New Model Added (3 areas 55 models)

HYUNDAI General 2022 MY

- ACCENT(HC)
- ACCENT/SOLARIS(HCR)
- ACCENT/VERNA(HCI)
- CRETA(SU2i)/ALCAZAR(PS7i)
- CRETA(SU2r)
- ELANTRA(CN7)
- G90(HI)
- GRAND i10 NIOS/AURA(AI3)
- GRANDEUR/AZERA(IG)
- GV80(JX1)
- H-100 TRUCK(HR)
- HB20(BR2)
- i10(AC3)
- i20(BC3)
- i30(PD)
- i30(PDE)
- i30N(PDEN)
- IONIQ electric(AE EV)
- IONIQ hybrid(AE HEV)
- IONIQ plug-in(AE PHEV)
- KONA electric(OS EV)
- KONA electric(OSe EV)
- NEXO(FE)
- PALISADE(LX2)
- REINA/VERNA(CB)
- SANTRO(AH2)
- SONATA hybrid(DN8 HEV)
- SONATA(DN8)

- VELOSTER N(JSN)
- VENUE(QX)
- VENUE(QXI)

HYUNDAI Korea 2022 MY

- Avante hybrid(CN7 HEV)
- Avante(CN7)
- Grandeur (IG)
- Grandeur hybrid(IG HEV)
- NEXO (FE)
- PALISADE (LX2)
- Poter2 (HR)
- Sonata (DN8)
- Sonata (LF)
- Sonata hybrid(DN8 HEV)
- VENUE (QX)
- Veloster N(JSN)

HYUNDAI USA 2022 MY

- ACCENT(HC)
- G90(HI)
- GV80(JX1)
- IONIQ Electric(AE EV)
- IONIQ Hybrid(AE HEV)
- IONIQ Plug-in Hybrid(AE PHEV)
- PALISADE(LX2)
- SANTAFE(TMA)
- SONATA hybrid(DN8 HEV)
- SONATA(DN8A)
- VELOSTER N(JSN)
- VENUE(QX)

- SPORTAGE(QLE)
- STONIC(YB CUV)
- Telluride(ON)

KIA Korea 2022 MY

- Bongo3 EV(PU EV)
- Bongo3-Truck(PU)
- Carnival(KA4)
- K5 HEV(DL3 HEV)
- K5(DL3)
- K5(JF)
- Morning (JA)
- Niro(DE EV)
- Niro(DE HEV)
- Niro(DE PHEV)
- RAY (TAM)
- SELTOS (SP2)
- Sorrento HEV (MQ4 HEV)
- Sorrento(MQ4)

KIA USA 2022 MY

- K5(DL3A)
- NIRO(DE EV)
- NIRO(DE HEV)
- NIRO(DE PHEV)
- SELTOS(SP2)
- SOUL(SK3)
- SPORTAGE(QL)
- TELLURIDE(ON)

[Back to Index](#)[Back to Index](#)**KIA****New Model Added (3 areas 40 models)****KIA General 2022 MY**

- K2500/K2700/K3000/K3000S(PU)
- K5 HEV(DL3 HEV)
- K5(DL3)
- Niro(DE EV)
- Niro(DE HEV)
- Niro(DE PHEV)
- PEGAS/SOLUTO(AB)
- PICANTO/MORNING(JA)
- RIO(YB)
- SELTOS(SP2)
- SELTOS(SP2i)
- SORENTO HEV(MQ4 HEV)
- SORENTO(MQ4)
- SOUL EV(SK3 EV)
- SOUL(SK3)

HYUNDAI/KIA TRUCK/BUS**Maker released (3 areas 16 models)****HYUNDAI TRUCK / BUS GENERAL**

- Aerocity(CY) 1998~2021
- AeroTown(SU) 2004~2021
- County(NB) 2004~2021
- HD120(VB) 2002~2021
- Light Duty Truck[HD35~78](UD) 2004~2021
- Universe(PY) 2007~2021
- Xcient(QZ12) 2014~2021

HYUNDAI TRUCK / BUS KOREA

- Aerocity(CY) 1998~2021
- AeroTown(SU) 2005~2021
- County(NB) 2004~2021
- MegaTruck(VC11) 2005~2021
- Trago(TRA) 2007~2013
- Universe(PY) 2007~2021

- Xcient(QZ12) 2013~2021

KIA TRUCK / BUS KOREA

- GrandBird[R3](R311) 2001~2007
- New GrandBird(GZ11) 2008~2021

[Back to Index](#)

SMART

Function improvement and bug fixes

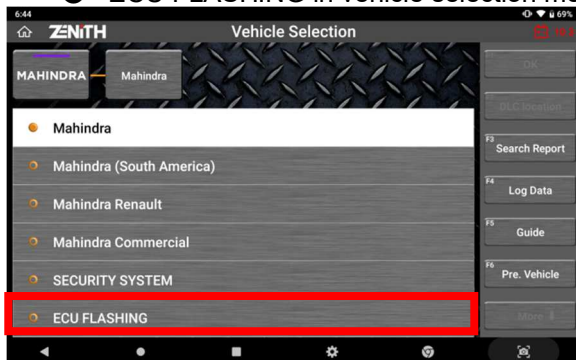
[Back to Index](#)

MAHINDRA

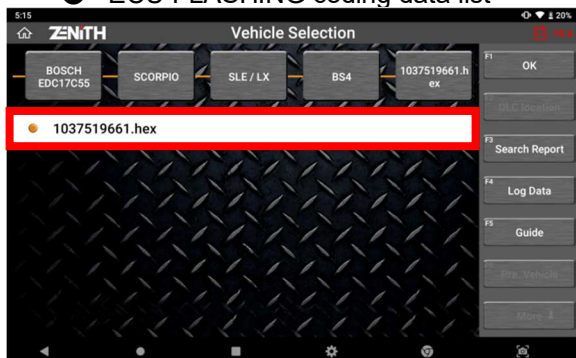
New function added (1 function)

- ECU FLASHING

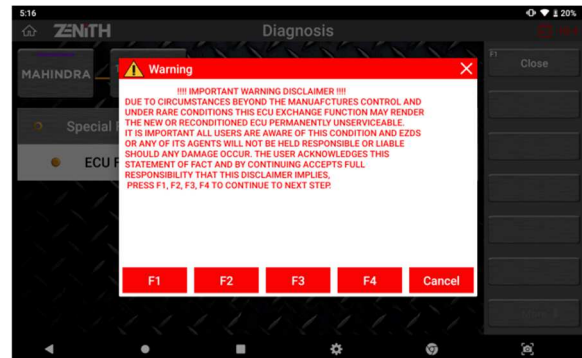
● ECU FLASHING in vehicle selection menu



● ECU FLASHING coding data list



● ECU FLASHING disclaimer



[Back to Index](#)

TATA

New Model Added (2 models)

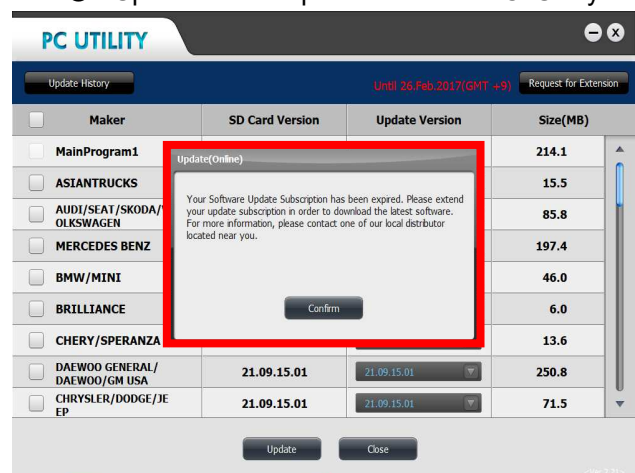
- NEXON > Diesel > BS VI : India
- ALTROZ > Domestic > Diesel : India

[Back to Index](#)

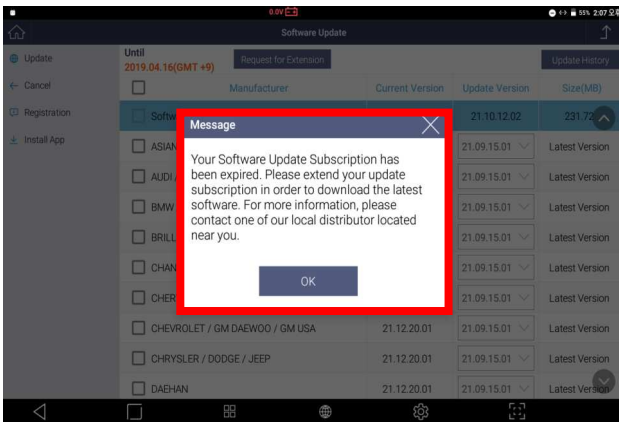
ETC

Update Policy with expired serial changed in all products

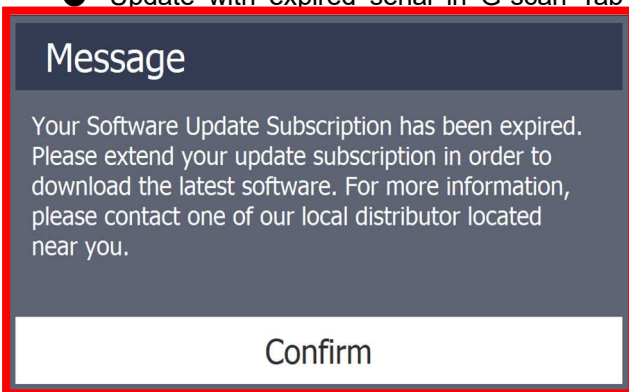
● Update with expired serial in PC Utility



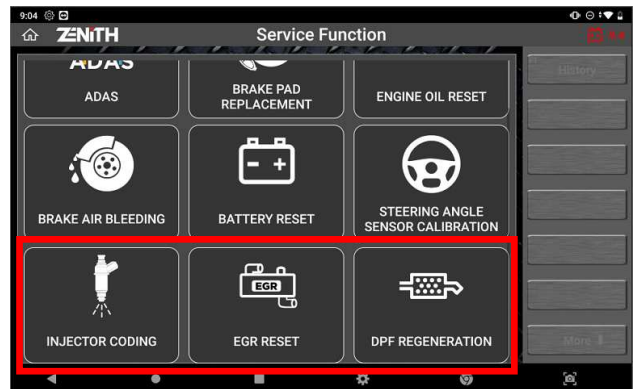
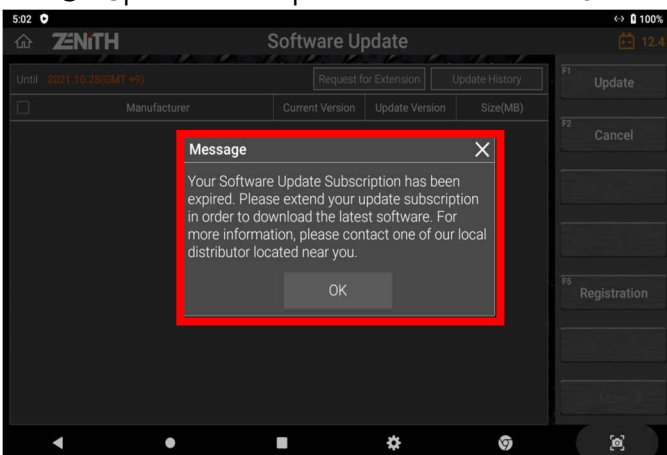
● Update with expired serial in G-scan3



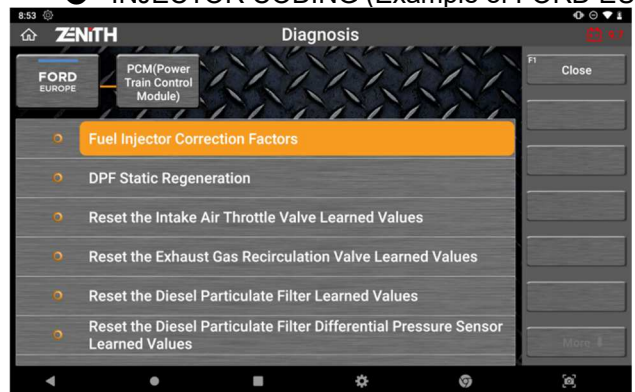
● Update with expired serial in G-scan Tab



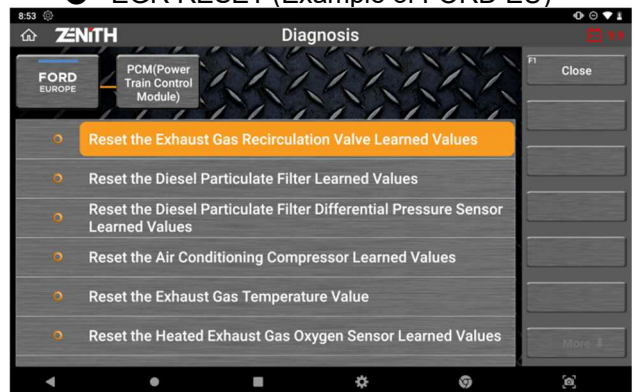
● Update with expired serial in Zenith Z5



● INJECTOR CODING (Example of FORD EU)



● EGR RESET (Example of FORD EU)

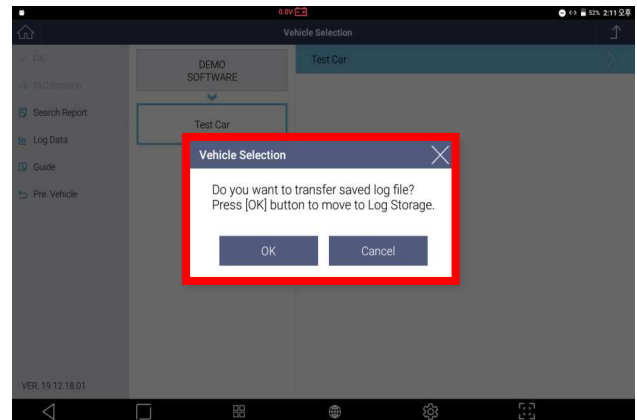
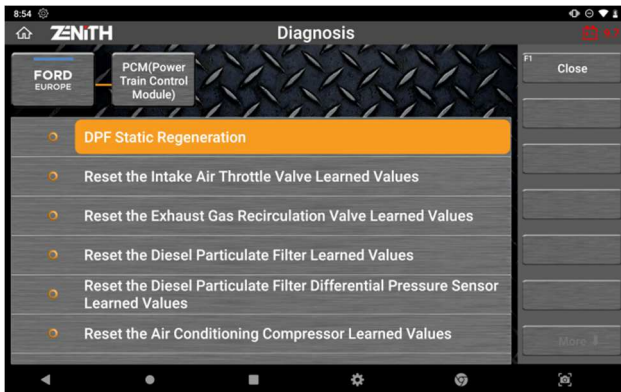


● DPF REGENERATION (Example of FORD EU)

Diesel vehicle Service Function added (3 functions)

- INJECTOR CODING
- EGR RESET
- DPF REGENERATION

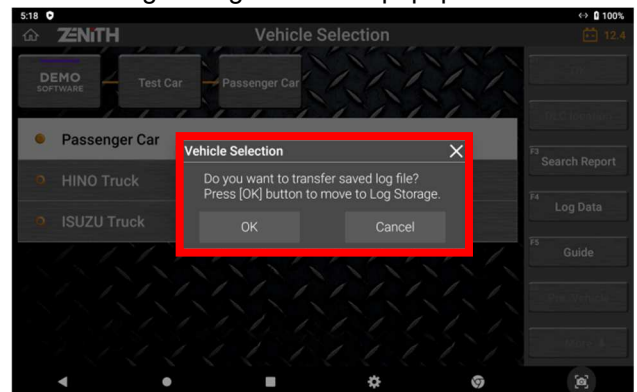
● Service function



Applicable Maker

- TOYOTA/LEXUS
- NISSAN/INFINITI
- HONDA /ACURA
- MITSUBISHI
- MAZDA
- SUZUKI/MARUTI
- SUBARU
- ISUZU
- FUSO
- HINO
- AUDI/VW/SEAT/SKODA
- FORD EU
- BMW
- RENAULT / DACIA
- LAND ROVER
- JAGUAR
- MERCEDES BENZ
- MERCEDES COMMERCIAL
- FIAT / ALFA ROMEO / LANCIA
- PEUGEOT
- FORD USA
- GM USA
- CHRYSLER/JEEP/DODGE
- OPEL / VAUXHALL
- HOLDEN
- MAHINDRA
- ASIAN TRUCKS
- SSANYOUNG
- SMART
- TATA

● Log Storage transition popup in Zenith Z5



[Back to Index](#)

LUT's max length enhanced

Log Storage transition function after Data logging added in G-scan3 and Zenith Z5

- Log Storage transition popup in G-scan3